

Contents:

- (1) - Shock
- (1) - Upper Ball Mount Plate
- (1) - Lower Ball Mount Stud
- (1) - Plate Nut
- (1) - Torx Wrench

Required:

- Ratchet
- T-30 Torx bits
- 14mm socket
- Torque Wrench

****Note:**

Install on Driver Side only.



Step 3

Remove the tailgate bed liner, there are various torx head screws.

****Note:** the process is the same on both standard tailgates and the step tailgate. On the standard tailgate you must remove then lift off the painted panel to access the hole used for this install.

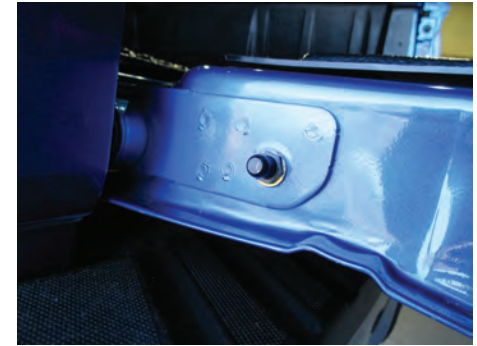


Step 4

With the tailgate cover and panel (if applicable) removed, on the left side of the tail gate you will see the access hole used.

You will need to bend the supplied plate nut so that you can reach the ball stud mounting hole on the outer edge of the tailgate (circled in above picture).

****Note:** Use the plate as a handle to feed the nut through the hole and to line the nut up with the mounting hole.



Step 5

Install the lower ball mount with blue thread locker, torque to 8ft-lbs.



Step 6

Install shock as shown above.



Step 1

Remove the lift gate strap and loosen the T50 lift gate bolt.



Step 2

Install the upper bracket behind the upper lift gate bolt. Reinstall lift gate strap.