



2013 Mustang Roush Lower Grille Delete

P/N: 421393 (R1313-17K945)

Application: 2013-2014 Ford Mustang
2013 Mustang 5.0L with Automatic/Manual Transmission
2013 Mustang 3.7L with Automatic/Manual Transmission

Installation Instructions



Before installing your ROUSH Performance Product(s), read through the entire installation procedure and check to make sure all items are present. Contact ROUSH Customer Service at 1-800-59-ROUSH, weekdays from 9:00 AM to 5:00 PM EST, with any questions regarding fit, missing parts or instructions that are unclear to you.



Packaging List for 2013 Mustang Lower Grille Delete Kit

Description	Part Number	Qty
2013 Mustang Lower Grille Delete Kit	R1313-17K945	
Trim, Lower Mouth	1313-17K945	1
Lower Mouth Bracket	1313-17K946	1
I/C Pump Mounting Bracket	1313-8C419	1
Lower Mouth Graphic	1313-17K945GR	1
Lower Mouth Support Braces	1313-17K947	2
Lower Mouth Template	1313-17K945TMPL	1
Installation Manual	1313-17K945IM	1
Lower Grille Delete Hardware Kit	1313-17K945HK	1
J-clip M6	W704823	2
Fastener w/washer - M4.2-1.41x16	12741	2
Screw - self tap with integral washer	SM4.2X140X13GM613M	6
Push on Retainer; 22mm Wide	21067	7
Fastener - M6x1.0x22 w/wash	R18020057	6
Bolt - Long Bumper Bolts (M8 X 35)	R18020007	2
Nut - I/C Pump Mntg Brkt to Bumper Bolts (M8)	W520413	4
Tape, Lower Mouth Trim	1313-17K945TAPE	1
Adhesion Promoter	021200-27571	1



ROUSH[®]
P E R F O R M A N C E

EQUIPMENT AND SUPPLIES REQUIRED

- Ratchet
- 7 mm Metric Socket
- Deburring tool
- Air Saw
- Soap and Water
- Drill
- Drill Bit Set
- Small Plastic Squeegee
- Safety Glasses
- 8 mm Metric Socket



LIMIT OF LIABILITY STATEMENT

The information contained in this publication was accurate and in effect at the time the publication was approved for printing and is subject to change without notice or liability. ROUSH Performance Products (RPP) reserves the right to revise the information presented herein or to discontinue the production of parts described at any time.

SAFETY REQUIREMENTS

STOP! READ IMPORTANT SAFETY CAUTIONS AND WARNINGS BEFORE PROCEEDING.

IMPORTANT SAFETY NOTICE

Appropriate disassembly, assembly methods and procedures are essential to ensure the personal safety of the individual performing the kit installation. Improper installation due to the failure to correctly follow these instructions could cause personal injury or death. Read each step of the installation manual carefully before starting the actual installation.

- Always wear safety glasses for eye protection.
- Place ignition switch in the OFF position.
- Always apply the parking brake when working on a vehicle.
- Chock the front and rear tires to prevent unexpected vehicle movement.
- If working without a lift, always consult vehicle manual for correct lifting specifications.
- Operate the engine only in well-ventilated areas to avoid exposure to carbon monoxide.
- Do not smoke or use flammable items near or around the fuel system.
- Use chemicals and cleaners in well-ventilated areas.
- Batteries produce explosive gases, which can cause personal injury. Therefore, do not allow flames, sparks or flammable substances to come near the battery.
- Keep hands and any other objects away from the radiator fan blades.
- Keep yourself and your clothing away from moving parts when the engine is running.
- Do not wear loose clothing or jewelry that can get caught in rotating parts or scratch surface finishes.
- Allow the engine, cooling system, brakes and exhaust to cool before working on a vehicle.

WORK SAFELY!

Perform this installation on a good clean level surface for maximum safety and with the engine turned off.

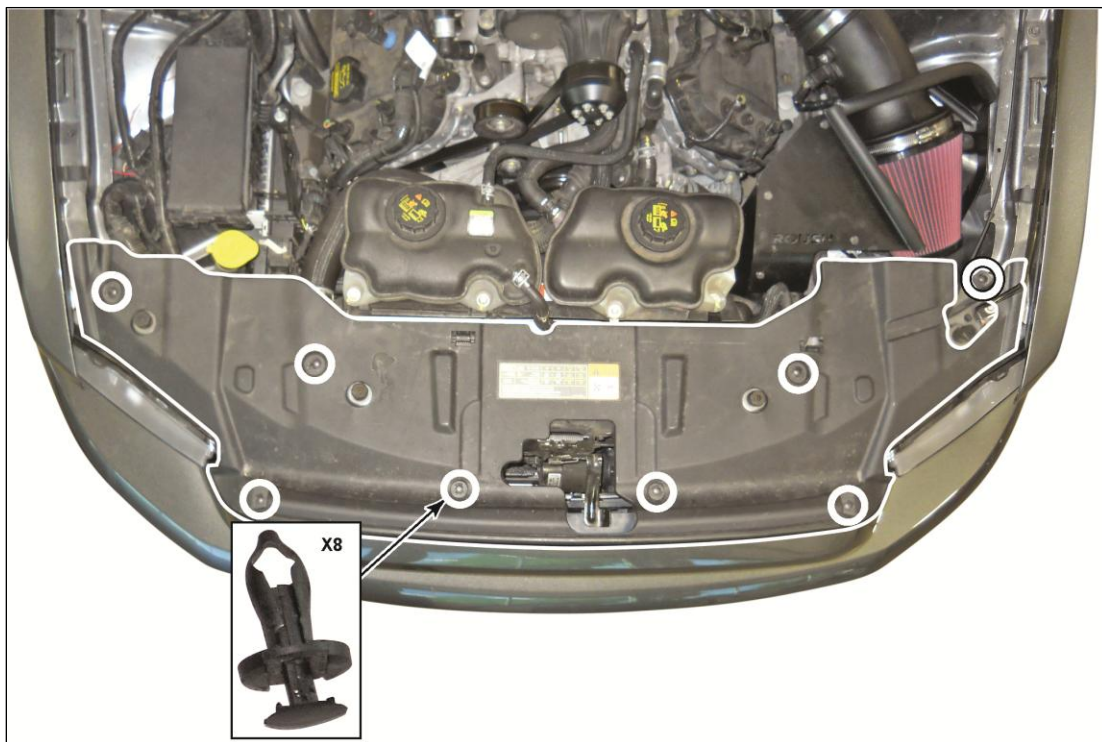


ROUSH
P E R F O R M A N C E

SECTION A – Removal

The following section will guide you through the removal of the factory upper grille.

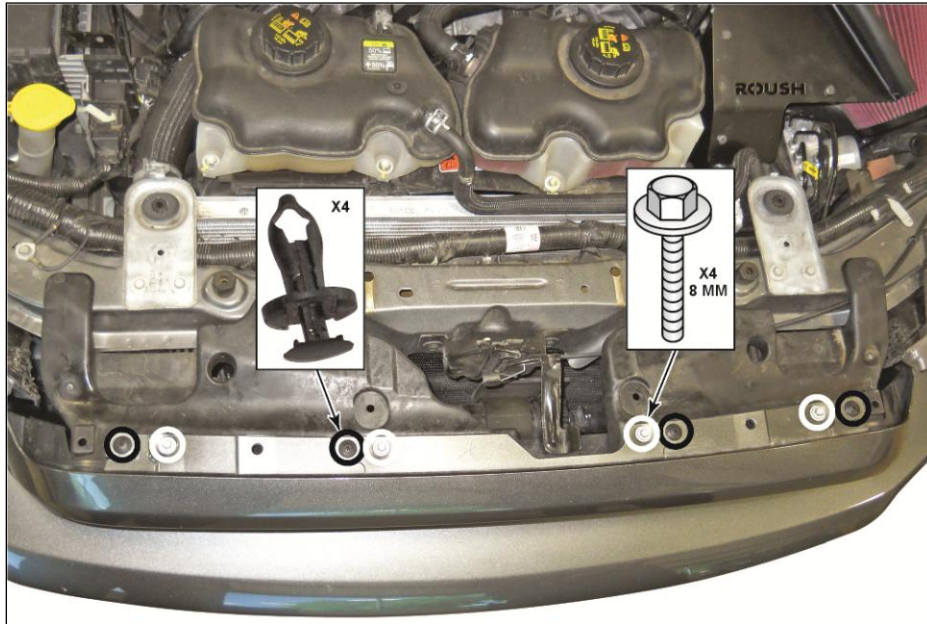
1. With the vehicle in NEUTRAL, position it on a hoist, raise and properly support.
2. Open the hood and remove the eight (8) pin-type retainers and the upper radiator closeout panel.





ROUSH[®]
P E R F O R M A N C E

3. Remove the four (4) pin-type retainers and the four (4) 8 mm bolts from the top of the bumper cover.
 - To install, tighten bolts to 3 Nm (27 lb-in).





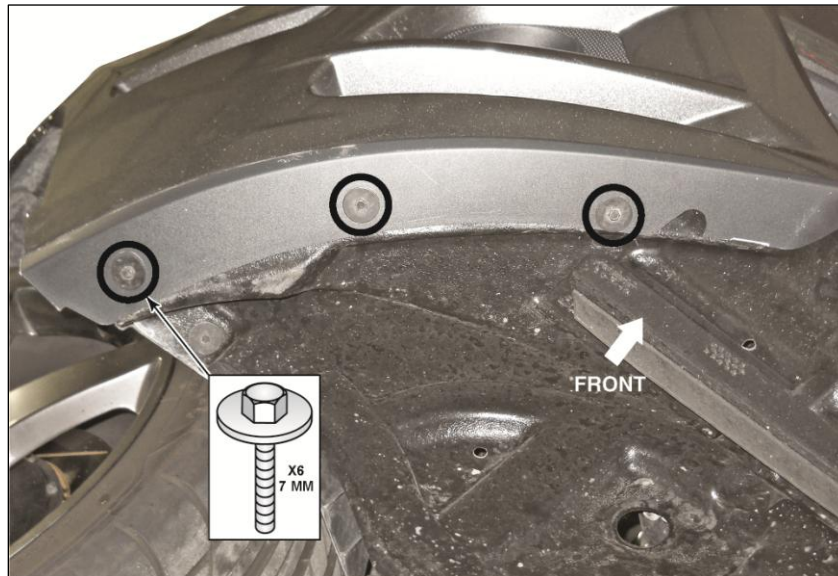
ROUSH[®]
P E R F O R M A N C E

4. Turn the wheel to the right to gain access to the three (3) 7 mm bolts on the LH side of the vehicle and repeat on the RH side of the vehicle.
 - To install, tighten bolts to 1.3 Nm (12 lb-in).

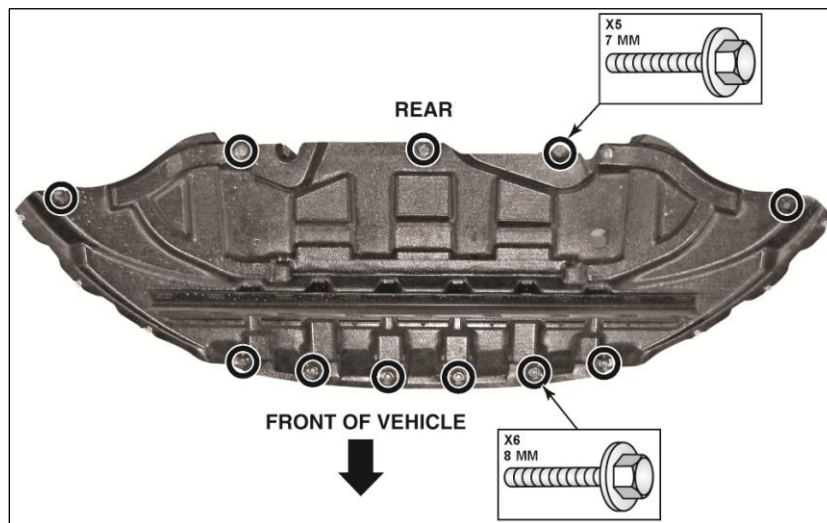




5. Remove the three (3) 7 mm outer lower valance bolts on the RH side. Repeat on the LH side.
 - To install, tighten bolts to 3.2 Nm (28 lb-in).



6. Remove the front six (6) 8 mm bolts, the rear five (5) 7 mm bolts and pull down and back to remove the lower air deflector.
 - To install, tighten bolts to 3.2 Nm (28 lb-in).





7. Disconnect the two (2) side marker light connectors on the LH and RH side.



CAUTION: To protect the bottom of the bumper cover from damage, place on a protective surface once removed.

8. Pull outward to unsnap the LH and RH sides of the bumper cover.





ROUSH[®]
P E R F O R M A N C E



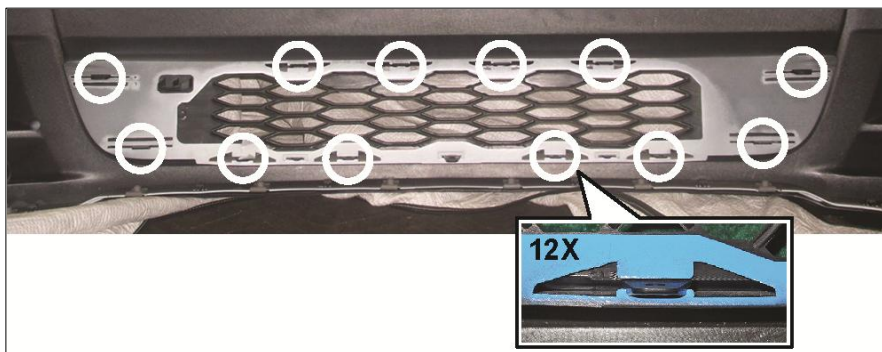
NOTE: If equipped, disconnect the fog lamp connectors.



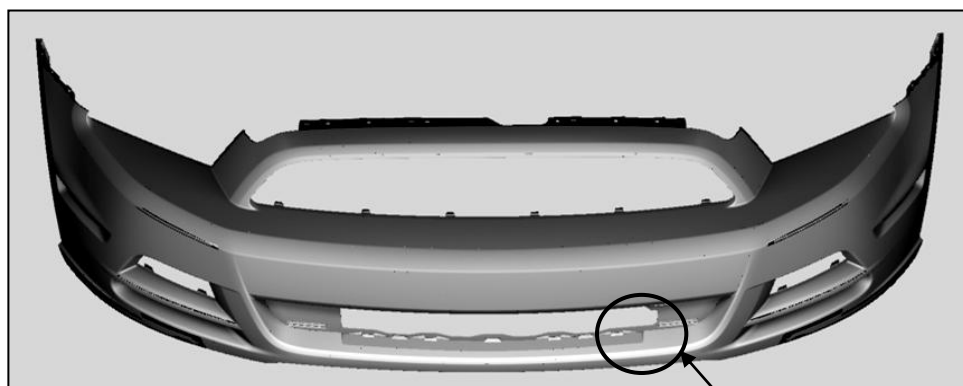
SECTION B – Modification

9. Position the front bumper surface on an appropriate work surface to prevent damage while modifying the lower grille opening. Remove the factory lower grille insert. Using a suitable trim tool, release the twelve (12) retaining tabs.

Note: Back side of bumper cover shown.



10. Cut out the lower mouth template (1313-17K945TMPL). Using the cut features on the template to assist in locating, position the lower mouth template into the front side of the fascia. Center the template into the lower mouth (right side shown, match left side evenly with the right).



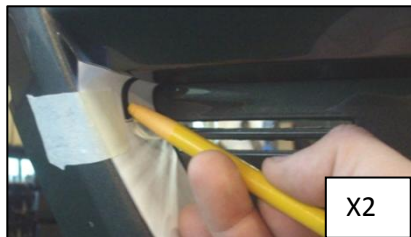


ROUSH[®]
P E R F O R M A N C E

11. Position the lower mouth template against the grille mounting surface as shown. Tape the template in multiple places to keep it from moving while working.



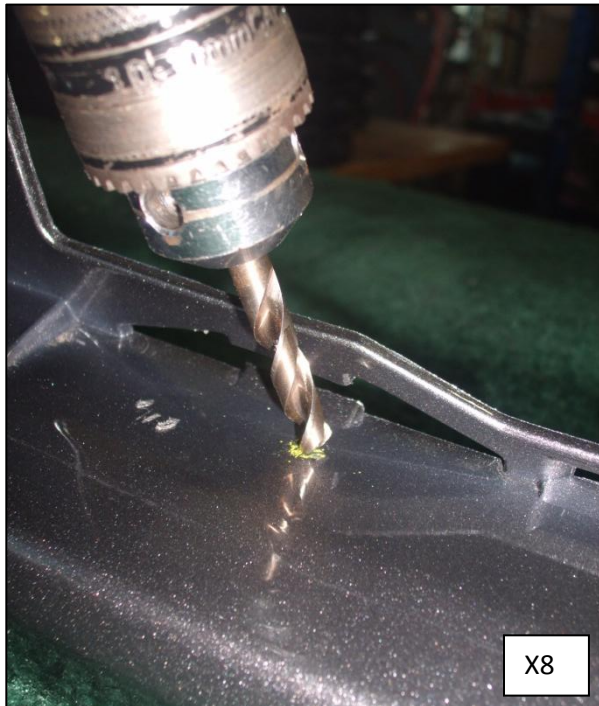
12. Using a china marker or other marking device, mark the two slots cutout at the ends of the templates. Using an automatic center punch, mark the locations of the eight (8) holes on the lower mouth template.



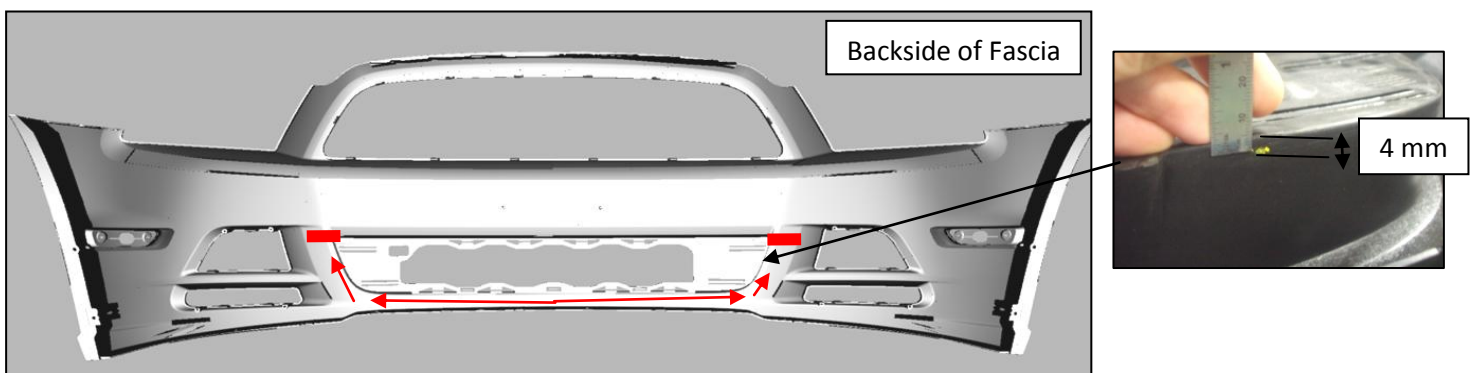


ROUSH
P E R F O R M A N C E

13. With a 90 degree angle drill and a short 1/8" drill bit, pilot drill the eight (8) hole locations and the two (2) slot locations marked in the previous step. Using a 1/4" drill bit open the eight (8) holes and two (2) slot locations. Using caution, elongate the two (2) slots. **Note: Use caution when drilling; do not contact the painted surfaces with the rotating drill chuck.**



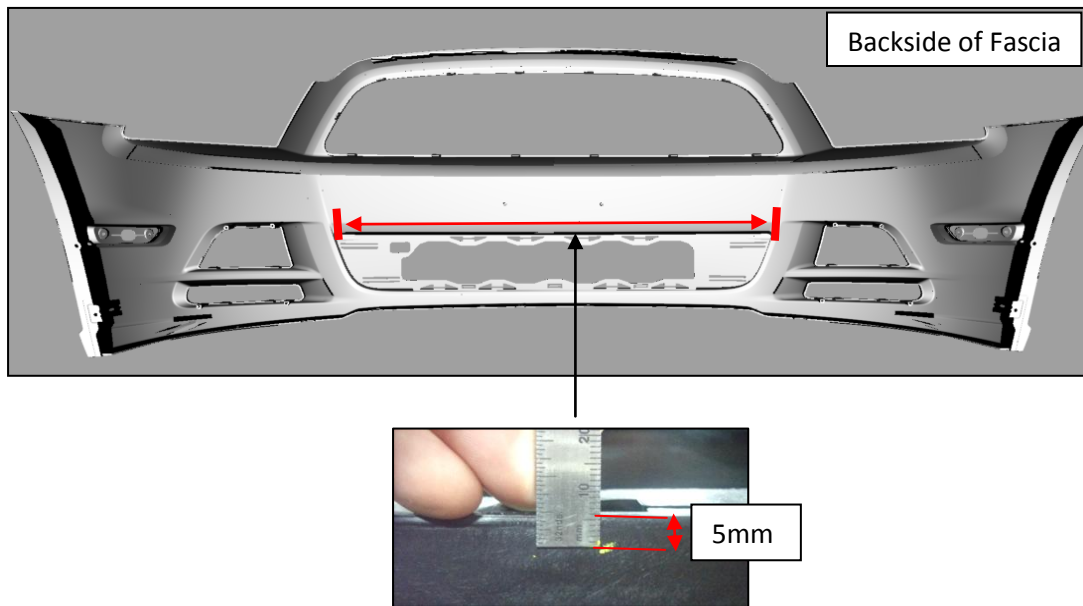
14. On the backside-lower surface of the grille mounting recess, with an appropriate measuring device, measure 4 mm down from the surface. Mark the fascia at this measurement in several locations. Continue measuring and marking around the arc of the lower grille shape to the top left and right corners.



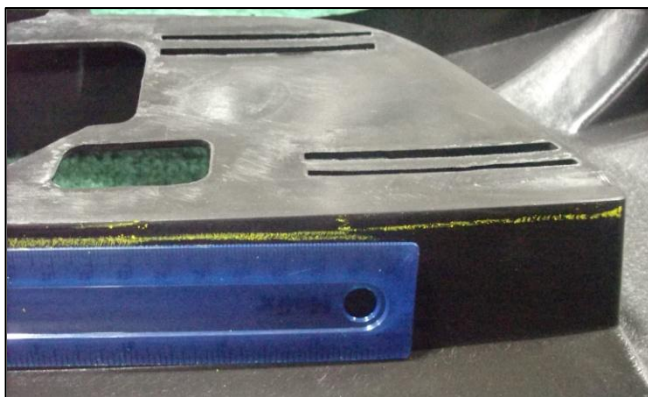


ROUSH
P E R F O R M A N C E

15. On the top side of the lower grille mounting surface, measure down 5 mm and mark in several locations along the perimeter of the recessed area.



16. With a straight edge, connect the lines marked in the previous steps around the entire perimeter of the grille mounting recess. Using an air saw or other suitable cutting tool, use the line as a guide in removing the backside of the grille recess.





ROUSH[®]
P E R F O R M A N C E

17. Once the backside of the grille recess is removed, the cut section should be similar to what is illustrated below.

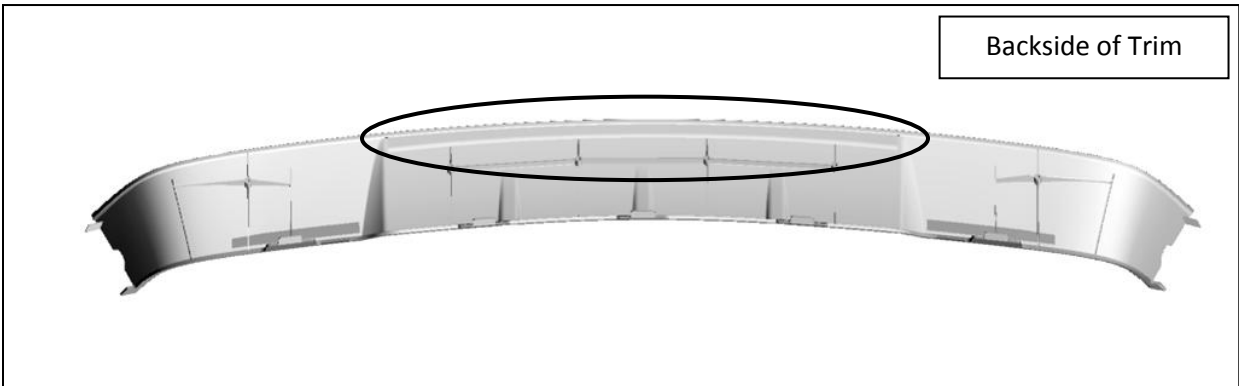




ROUSH[®]
P E R F O R M A N C E

SECTION C – Installation

1. Apply the included Adhesion Promoter (021200-27571) to the area where the tape (1313-17K945TAPE) is to be applied to the lower mouth trim insert (1313-17K945).



2. Install the tape (1313-17K945TAPE) onto the lower mouth trim piece as shown in the image below.





ROUSH
P E R F O R M A N C E

3. Using a suitable trim tool, remove the four (4) plastic push pins from the foam bumper isolator to access the four (4) inner bumper reinforcement bolts.



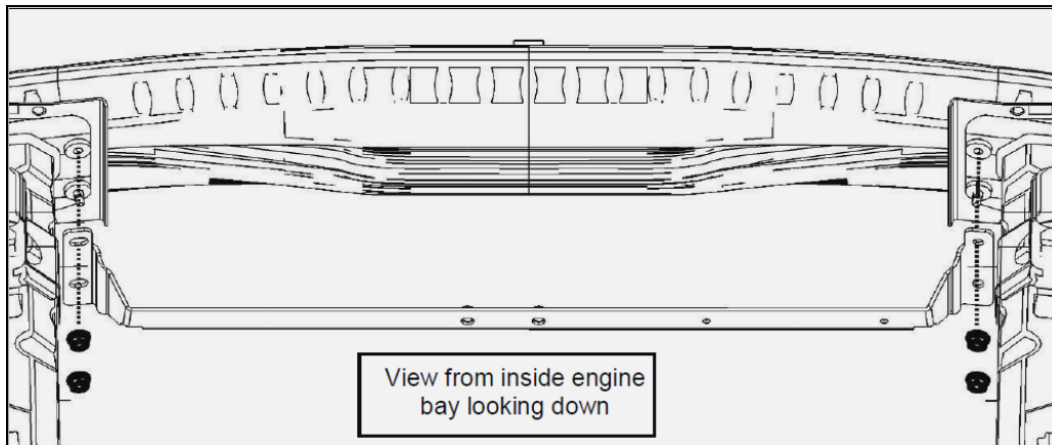
4. With a 13mm socket remove the inner four (4) front bumper reinforcement bolts.





ROUSH
P E R F O R M A N C E

5. Install the four (4) bolts (R18020007) in place of the four (4) which were removed in the prior step and torque to 25 Nm. Install the Intercooler Pump Mounting Bracket (13108C419) behind the bumper onto the long bumper bolts using (4) M8 nuts (W520413). Torque to 25 Nm.



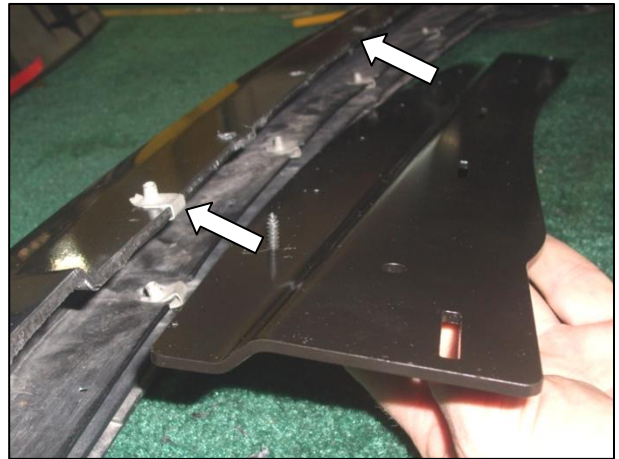


ROUSH
P E R F O R M A N C E

6. Install the two (2) J-clips (W704823) in the left and right 2nd to outside holes drilled in step 13 of section B. Orient the J-clips so the threaded portion is upward. (Driver side shown, repeat on passenger side).



7. Loosely install the support bracket (1313-17K946) with two (2) screws (12741) into the location of the J-clips installed in the previous step. Inspect the four (4) free additional holes in the bracket to verify the holes drilled through the fascia in step 13, section B are aligned properly.



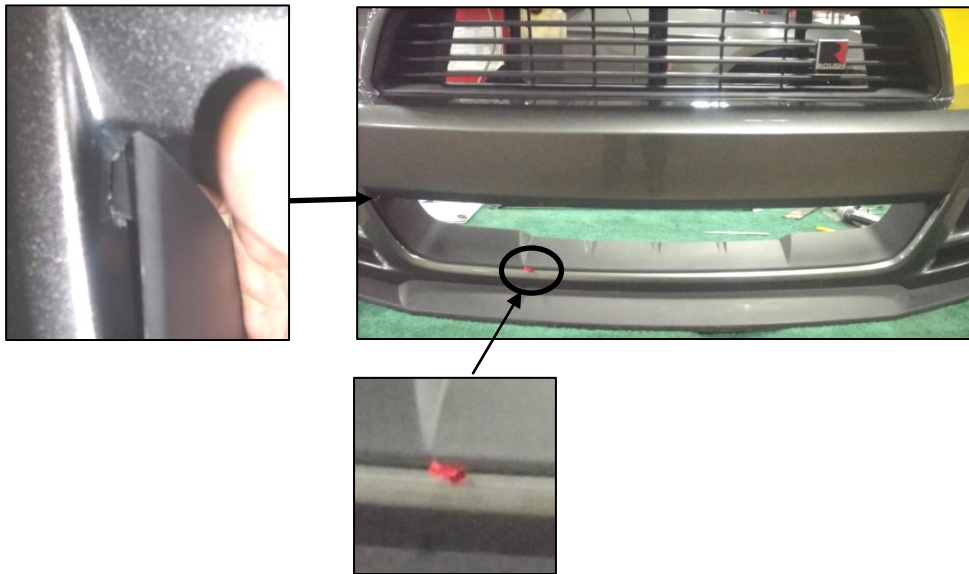


ROUSH
P E R F O R M A N C E

8. Bend the free length of the red tape film on the lower mouth trim piece (1313-17K945) over toward the outside edge of the part so that it is free to pull off once the trim piece is installed.



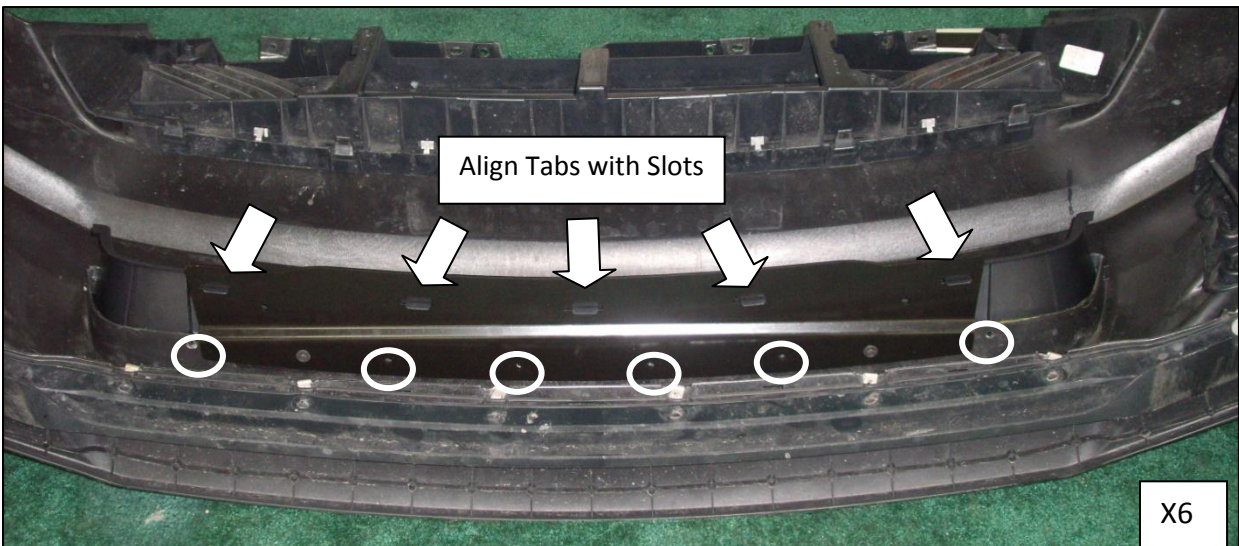
9. Loosely place the lower mouth trim piece into the lower grille opening. Line up the tabs in the left and right corners with the slots of the fascia. Be sure the tape film is accessible for removal.



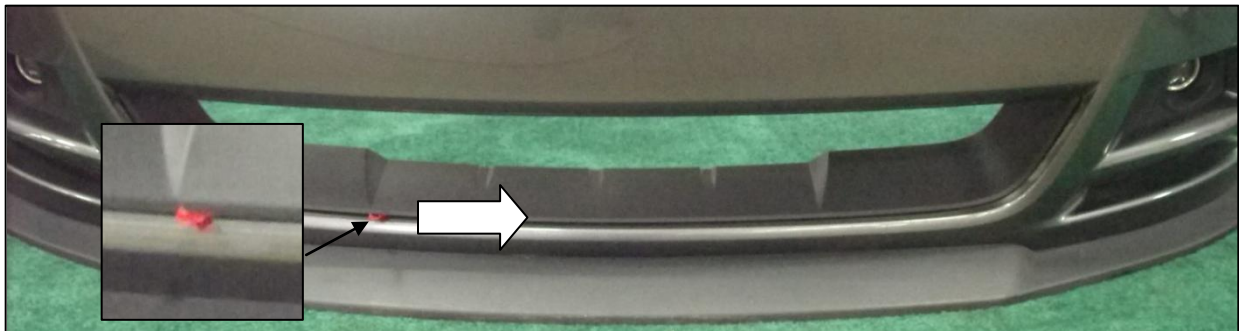


ROUSH
P E R F O R M A N C E

10. Turn the fascia front side down. Align the remaining five (5) tabs with the lower mouth reinforcement bracket slots. Loosely install the six (6) screws (SM4.2X140X13GM613M) in the remaining four (4) holes of the reinforcement bracket and the two (2) outermost holes.



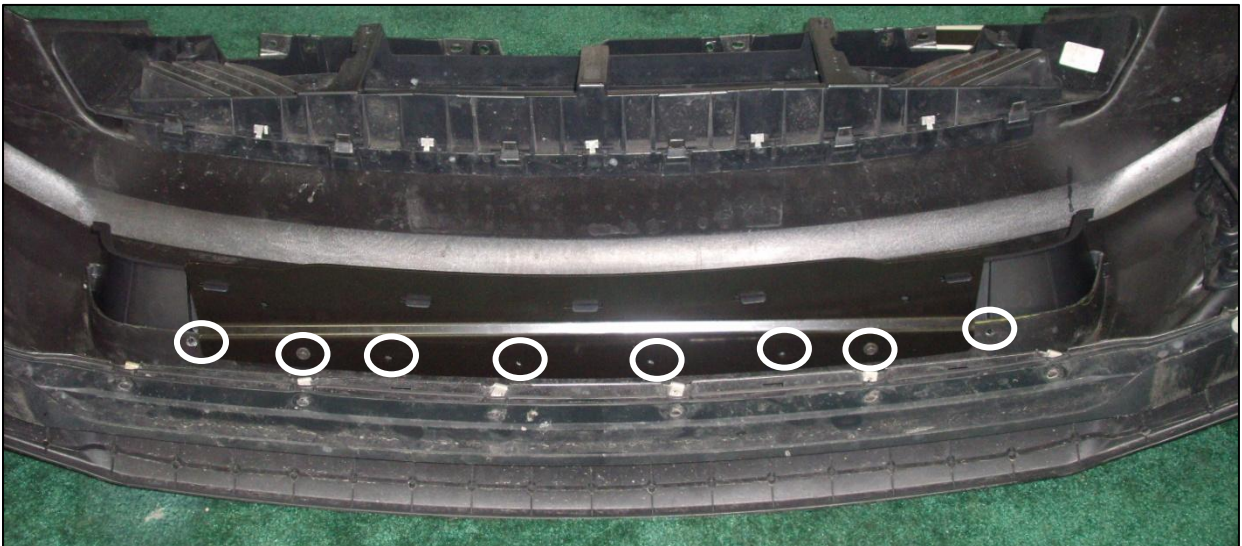
11. Orient the fascia so the lower mouth opening is accessible. Check the right and left corners to be sure the tabs of the lower mouth trim are still aligned with the fascia. Remove the red tape film by slowly peeling it away from the fascia. Once the film is completely removed, press firmly along the surface where the tape was applied.





ROUSH
P E R F O R M A N C E

12. Access the backside of the fascia. Tighten the six (6) screws installed in step 10 to 1 Nm. Tighten the two (2) screws installed in step 7 to 3 Nm.



13. Install the seven (7) retaining clips (21067) onto the seven (7) lower mouth trim tabs, centering the tab within the clip and pressing firmly. **Note: a drum brake spring tool is recommended for pressing the clips onto the tabs.**





ROUSH[®]
P E R F O R M A N C E

14. Loosely mount the front fascia onto the vehicle. Using four (4) bolts (R18020057), install the two (2) pencil braces (1313-17K947) onto the intercooler pump mounting bracket installed in step 5. Using the remaining two (2) bolts (R18020057), install the pencil bracket to the lower mouth support bracket. Torque the six (6) bolts to 10 Nm.



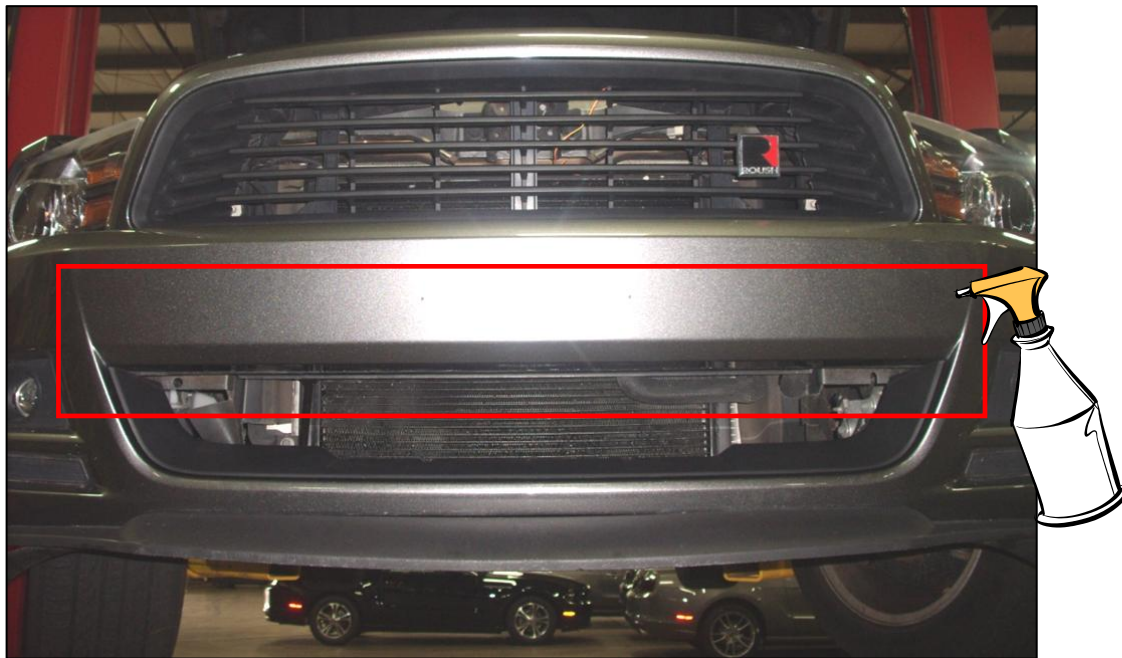
15. Reverse the procedure in section A to install the front fascia.



ROUSH[®]
P E R F O R M A N C E

SECTION D: Graphic Installation

1. With the front fascia installed, apply soapy water to the surface of the fascia just above the lower mouth.



2. Remove the white backing from the black graphic (1313-17K945GR) and apply soapy water to the backside of the graphic to aid in installation.



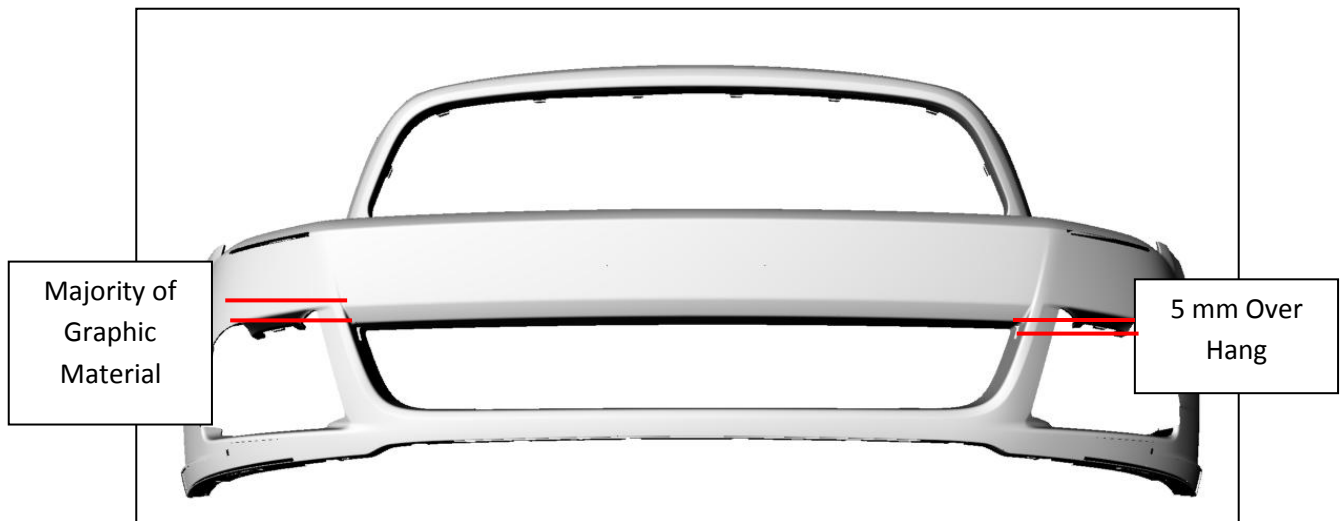
Remove the backing
from the graphic

Apply soapy water to
the back side of the
graphic



ROUSH
P E R F O R M A N C E

3. Install the graphic just above the lower mouth opening. Allow 5 mm of the graphic to hang just beyond the last body line leading into the lower mouth opening.





4. After the graphic is aligned and flat, run a plastic squeegee along the surface of the graphic to remove the soapy water and air bubbles. If any ripples form in the material, apply heat using a heat gun to remove the ripples.





Congratulations!!! You have completed the installation of your new ROUSH Performance Products Mustang Lower Grille Delete Kit.





WARRANTY

All retail parts carry a 90-day warranty from the date of purchase. This warranty covers defects in materials or workmanship, and does not include (i) normal wear and tear, environmental conditions, improper installation; (ii) road hazards, misuse, abuse, neglect, accidents, collision, fire, theft, freezing, vandalism, riot, explosion, or objects striking the vehicle; (iii) misusing the vehicle, such as driving over curbs, overloading, racing or using the vehicle as a stationary power source; (iv) altering, disassembling or modifying the parts; (v) defects caused or induced by failures, breakdowns or damage by other parts, components or the vehicle; (vi) subjecting the parts to excessive moisture or water or any motor vehicle fluids (e.g.: oil, anti-freeze, battery acid, brake fluid, etc.); (vii) acts of God, natural disasters and other similar causes beyond the reasonable control of ROUSH; or (viii) application of chemicals that affect the parts. This Limited Warranty does not cover surface deterioration of paint, trim and appearance items that result from use and/or exposure to the elements, such as stone chips, scratches, bird droppings, lightning, hail, windstorm, dings, dents, earthquake, road salt, tree sap, water or flood.

ROUSH SHALL NOT BE LIABLE TO REIMBURSE CUSTOMER/DEALER FOR INCIDENTAL OR CONSEQUENTIAL DAMAGES RESULTING FROM THE INSTALLATION OR USE OF ANY PRODUCT SOLD THROUGH THIS CATALOG OR ARISING OUT OF ANY BREACH OF WARRANTY. EXCEPT AS MAY BE STATED IN THIS CATALOG, ROUSH DISCLAIMS ALL EXPRESS AND IMPLIED WARRANTIES, INCLUDING THE WARRANTIES OF MERCHANTABILITY AND FITNESS FOR A PARTICULAR PURPOSE. IN NO EVENT SHALL ROUSH'S LIABILITY EXCEED THE PRICE PAID BY CUSTOMER/DEALER FOR PRODUCTS SOLD REGARDLESS IF ROUSH HAS BEEN ADVISED IN ADVANCE OF ANY POTENTIAL PROBLEM OR IF A CLAIM IS BASED ON CONTRACT, TORT, STRICT LIABILITY, PRODUCT LIABILITY OR OTHERWISE. SOME STATES DO NOT ALLOW THE EXCLUSION OR LIMITATION OF IMPLIED WARRANTIES OR THEIR DURATION, OR LIABILITY FOR INCIDENTAL OR CONSEQUENTIAL DAMAGES, SO THE ABOVE EXCLUSIONS OR LIMITATIONS MAY NOT APPLY.