



UPPER & LOWER GRILLE

(2015-2017 MUSTANG GT, ECOBOOST, V6)

INSTALLATION INSTRUCTIONS

CONTENTS

(1) Upper Grille (If purchased)
(1) Lower Grille (If purchased)

TOOLS REQUIRED

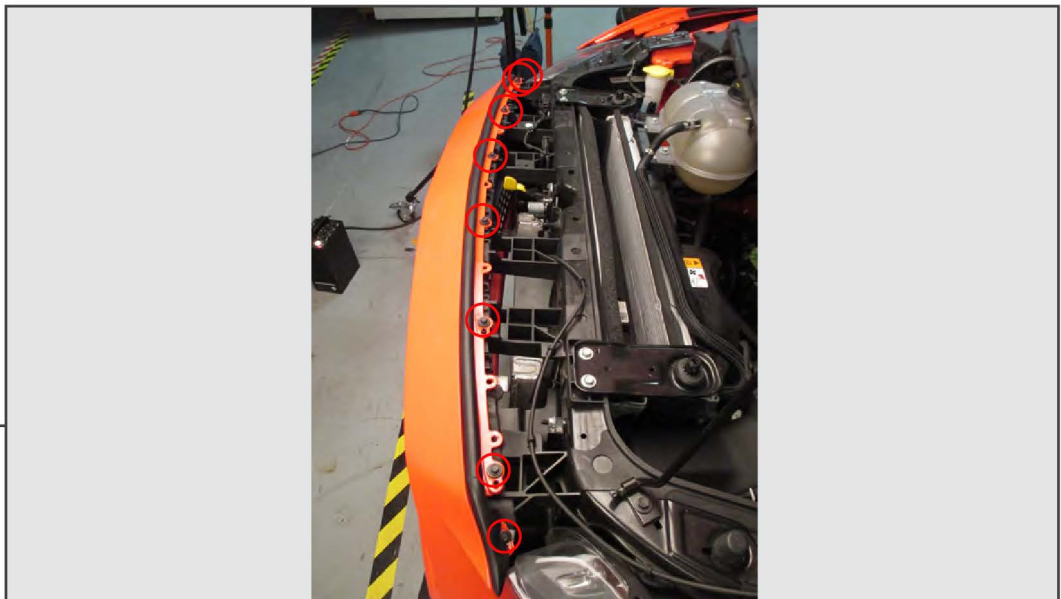
5.5mm, 7mm, 8mm, Sockets
Ratchet & Long Extension
Trim Panel Removal Tool
Large Flat Head Screw Driver
Jack & Jack Stands

STEP 1



Jack the vehicle up and support the front end with jack stands. Using a trim panel removal tool, remove the (8) push clips securing the radiator cover remove it from the vehicle.

STEP 2



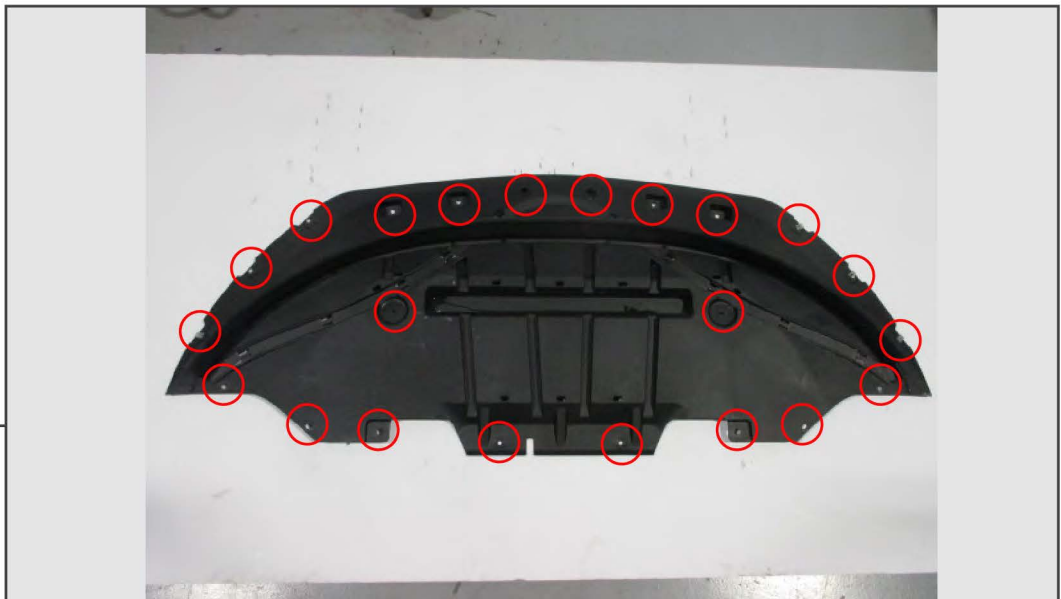
Remove the (6) 8mm and (2) 5.5mm bolts securing the bumper cover to the radiator support.

STEP 3



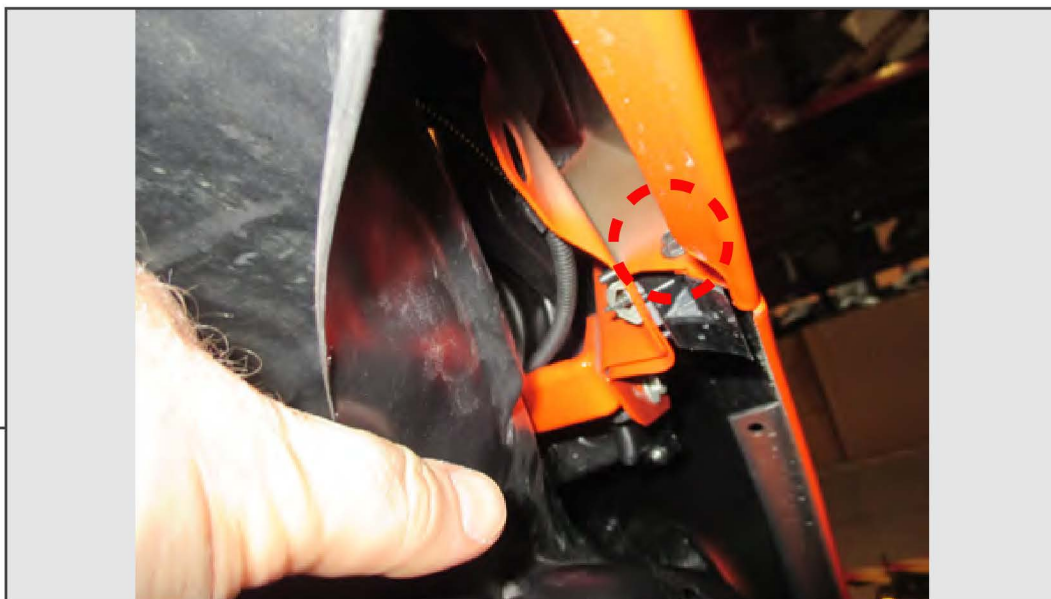
On each side of the bumper, remove the plastic clips holding the wheel well liner to the bumper/splash shield.

STEP 4



Remove the 7mm bolts & push clips attaching the splash shield to the bumper and undercarriage. There are two versions of the splash shield, both are attached similarly.

STEP 5



Fold back the fender liner so that you can access the (1) 8mm bolt that holds the bumper to the fender. It may help to remove the wheel for better access.

STEP 6



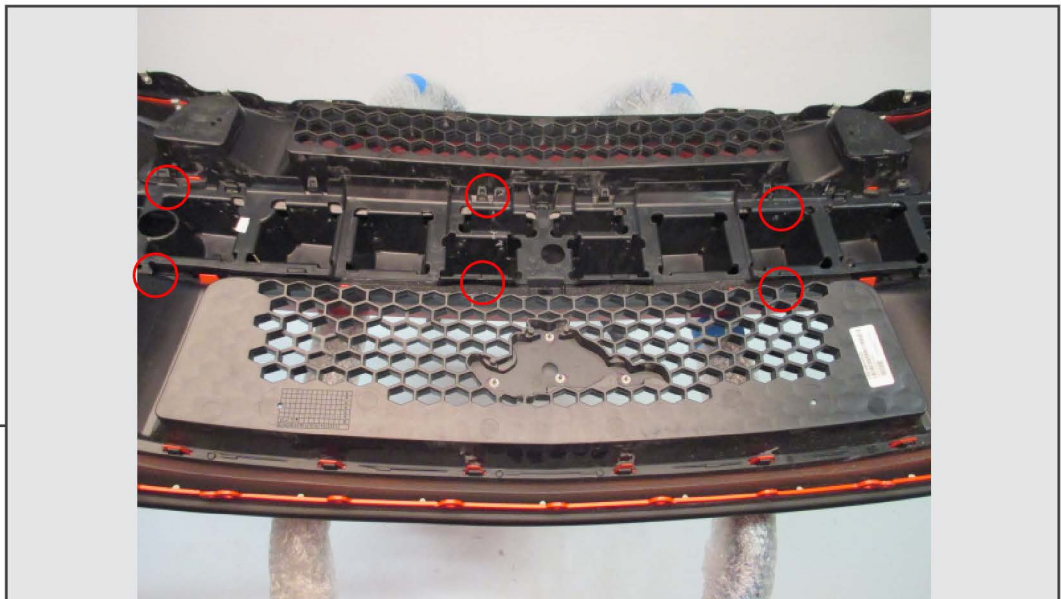
With the splash shield removed, disconnect the wiring harness for the turn signal, marker light, and fog light.

STEP 7

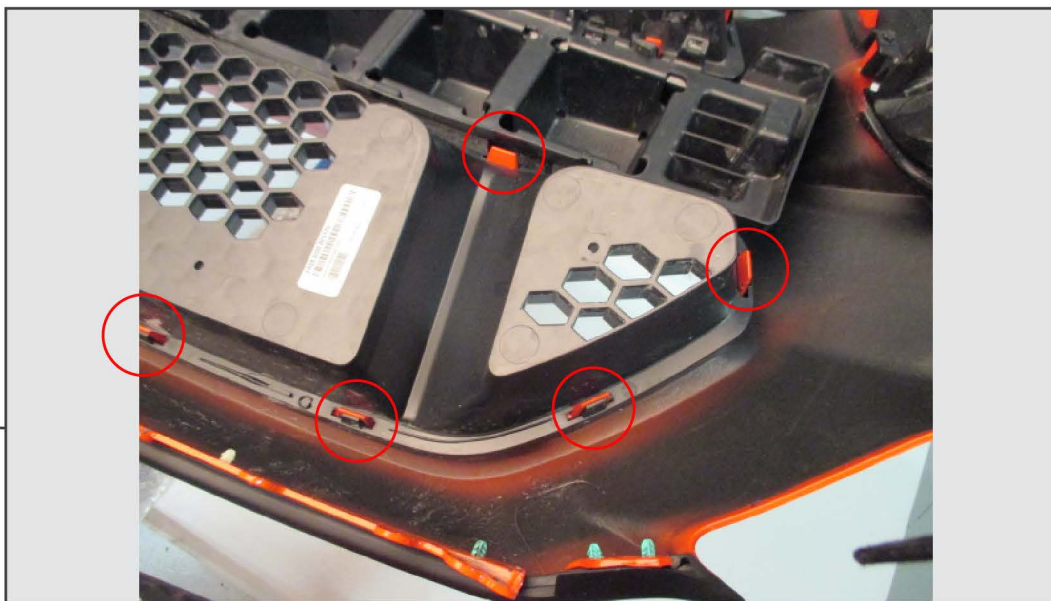


Once the bumper cover is ready to remove, using firm pressure pull the edge of the bumper to pop it from the clips. Have a helper support one side so that you don't scratch the paint. Slowly remove the bumper and support it on a soft non-abrasive surface.

STEP 8



Using a flat head screw driver, remove the inner bumper brace located in between the upper and lower grille.

STEP 9

Using a large flat head screw driver, release the clips around the perimeter of the upper and lower grille. It's easiest if you start at the far left or right of the grille and work your way across.

STEP 10

Install the MMD grilles using the same mounting clips as the factory grilles. The clips are tight, so make sure all the clips are fully seated. If you're having trouble getting any of the clips to fully seat, put one hand on the front of the bumper, around the perimeter of the grille opening, and hit the back the of the grille with the other hand. Once the grilles are fully installed, reinstall the bumper in reverse order. **DON'T FORGET TO RECONNECT THE TURN SIGNALS.**