



Blowfish Racing, LLC
200 Old Love Point Road
Stevensville, MD 21666
steve@blowfishracing.com
410-643-1127

Secret Hitch and Rear Tow Hook Kit, 2005-2014 Mustang

Congratulations on the purchase of your Blowfish Racing, LLC Secret Hitch and Rear Tow Hook Kit! You have chosen a quality, American Made product that has been Engineered for to meet and exceed industry standards.

The Mustang has become a versatile vehicle for commuting, grocery getting, as well as be a capable performer....all while still being a show circuit car. But there's one utilitarian need that has been avoided, as a result of its unsightliness...Trailer Hitches. That "growth" hanging down from your rear diffuser isn't attractive and it's embarrassing.

Not anymore! With the Blowfish Racing Secret Hitch, you have the ability to remove the unsightly, visible portion of the hitch when not in use. No longer does your sweet ride look like it belongs with minivans. Then, while at the track you can attach the provided Red Tow Loop for a no cut option for on-track extraction.

STEP 1: Preparation

READ THESE DIRECTIONS PRIOR TO THE INSTALLATION!

Tools Recommended:

- Ramps/Jack & Jackstands
- Wheel Chocks
- 3/8" Drive Ratchet
- English and Metric Socket sets
- "Channellock" Adjustable Pliers

Installation Time Needed: about 2.0 hours

WARNING!! INSTALLATION REQUIRES WORKING AROUND THE EXHAUST. ALLOW THE CAR TO COOL OFF PRIOR TO INSTALLATION TO PREVENT BURNS.

STEP 2: Elevate Vehicle and Secure it

Jack the rear of the vehicle according to the manufacturer's recommended procedures and jacking points. Use wheel chocks to prevent the vehicle from moving.

STEP 3: Mufflers Lowered

The mufflers need to be out of the way to gain access to the frame. Loosen the 2x band clamps (FIG 1) securing the muffler inlet to the exhaust pipe and move the clamp forward away from the joint. Using "Channellocks" adjustable pliers, push the rear muffler hanger pin out of the rubber isolator, one for each muffler. Tilt the mufflers down to gain access to the rear hanger isolation mounts (FIG2). OPTIONAL: If there doesn't appear to be enough room to access the frame, unbolt the metal isolation hangers from the body to allow the mufflers to be removed.

FIG 1-Muffler Band Clamp





STEP 4: Nut Plate Installation

Locate the hole in the outer, side of each of the frame rails (FIG3). Thread a Fish Line onto each hole, helical part first. Work the fish line until it can be pulled out of the large round hole in the bottom of each frame rail (FIG4). Make sure that both ends stay on the outside of the frame rail. Thread the helical part through the square hole in the nut plate and then thread the helical onto the carriage bolt (FIG5). Push the nut plate into the hole, threaded side first, followed by the carriage bolt, as you pull the straight end of the fish line out of the rearward hole. Leave the nut plate and carriage bolt in the frame rail, with the straight end of the fish line sticking out of the small rearward hole.

STEP 5: Hitch Crossbar Installation

Orient the Hitch Crossbar under the rear of the car, so the side brackets have the lower slot closer to the rear bumper. Raise the Crossbar up to just below the frame and thread the end of the fish line through the rear slot. Continue to raise the Crossbar until the frame holes and Crossbar slots align and the fish line is freely moving. Pull the fish line out. This will insert the carriage bolt through the nut plate and then bring the carriage bolt threads out through the rear Crossbar slot (FIG6). Pull down on the Crossbar to pinch the carriage bolt and remove the fish line. **NOTE: MAKE SURE THE CARRIAGE BOLT DOESN'T FALL BACK INTO THE FRAME!!** Grasp the carriage bolt thread and rotate the nut plate up until it contacts the top of the frame channel and hold it there while inserting the bolt into the upper Crossbar slot. Use the bolt to probe and feel where the nut plate is and

FIG 3-Frame hole (Driver side shown)

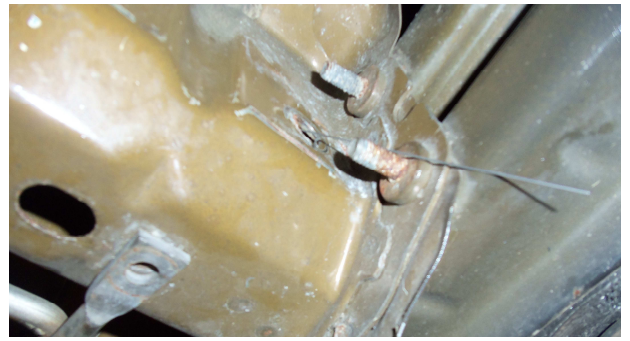


FIG 4-Helical Fish Line exiting large hole



FIG 5-Fish line hardware orientation



FIG 6-Crossbar orientation and mounting



slowly rotate the nut plate back down until the threaded hole and bolt can engage and thread together. This may take a few attempts, so don't be discouraged. Once the bolt is threaded into the nut plate, thread the flange nut onto the carriage bolt. Torque to 70ft/lbs.

STEP 6: Muffler Reinstallation

Reversing STEP 3, re-install the mufflers. Make sure the mufflers are lined up properly before tightening everything down. NOTE: If using quad-tip mufflers, the inside tip may contact the Crossbar. Adhere the supplied high temp rubber pad to the Crossbar in the area of contact.

STEP 7a: Receiver Installation

Engage the protruding threaded collars in the Crossbar plate into the receiver holes and fasten using the supplied conical washers and bolts. Torque to 25ft/lbs. NOTE: Washers will need to be replaced when they flatten out.

STEP 7b: Tow Loop Installation

Engage 2 of the 4 protruding threaded collars in the Crossbar plate into the Tow Loop holes and fasten using the supplied conical washers and bolts. Torque to 25ft/lbs. NOTE: Washers will need to be replaced when they flatten out.



FIG 7-Receiver Installation

