



Ahead of the Curve®



Stealthbox®

INSTALLATION GUIDE
for the

SB-F-MUSCPE/12TW3

SKU# 94617

2015 - Up Ford Mustang Coupe

Enclosure Type: Sealed

Driver Type: 12TW3-D4

Nominal Impedance: 2 ohms

Continuous Power Handling: 400 watts (RMS method)

! IMPORTANT

If you choose to perform the installation yourself, it is absolutely vital that the Stealthbox® be properly mounted to the vehicle according to these instructions. Failure to mount the enclosure properly presents two problems:

- 1) The sub-bass performance will suffer due to the movement of the enclosure caused by the force exerted by the woofer(s).
- 2) A loose enclosure presents a serious safety hazard in the event of a collision or sudden deceleration.

INSTALLATION
DIFFICULTY:

2 OUT OF **5**

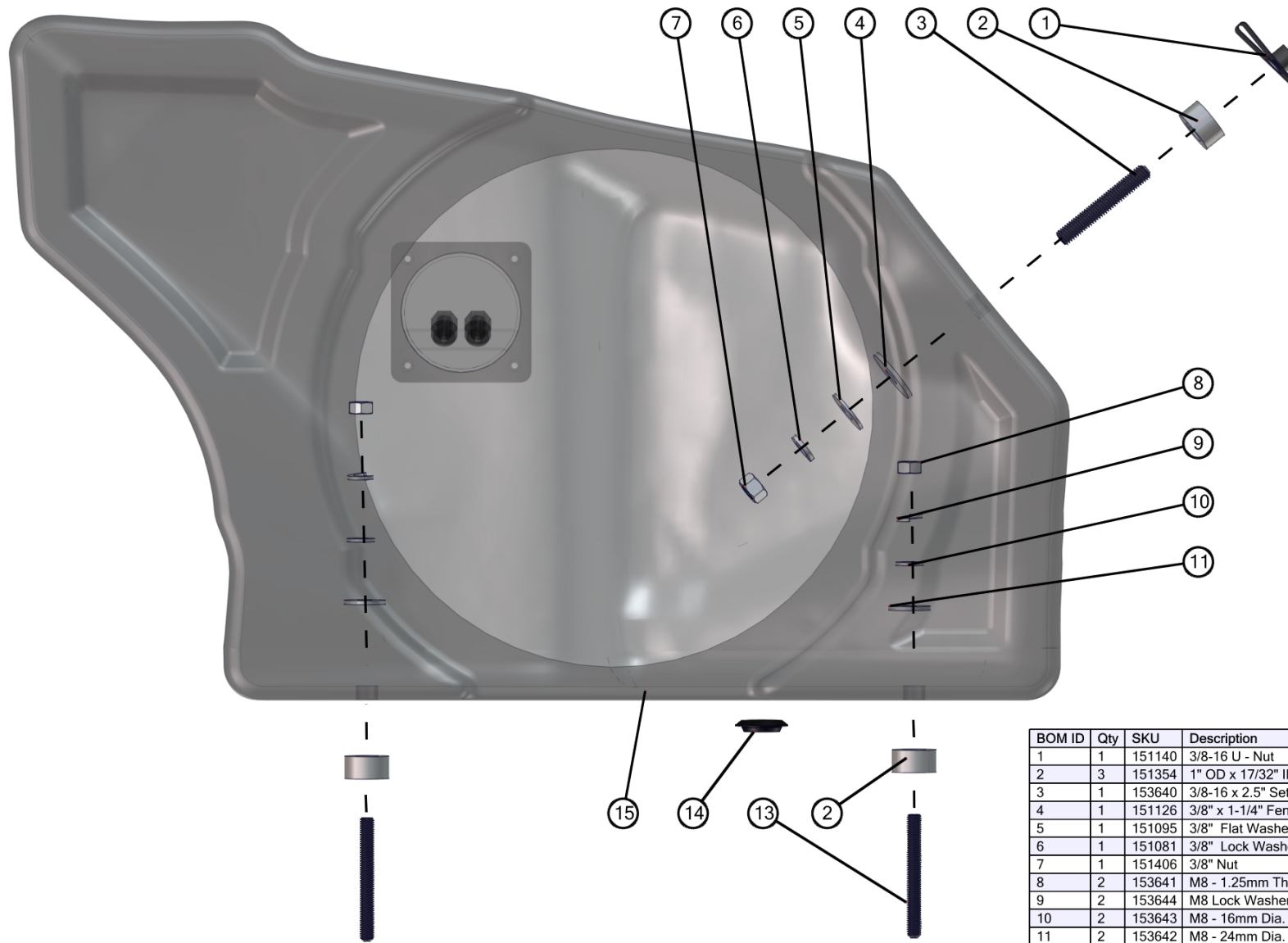
ESTIMATED TIME:
1-2 HOURS



Thank you for choosing a JL Audio Stealthbox® for your automotive sound system. With proper installation, your new vehicle-specific enclosed subwoofer system will deliver years of listening pleasure.

We strongly recommend that you have your new Stealthbox® installed by your authorized JL Audio dealer. The installation professionals employed by your dealer have the necessary tools and experience to disassemble and reassemble your vehicle properly. If you prefer to perform your own installation, please read this installation guide completely before beginning the process.

INCLUDED HARDWARE

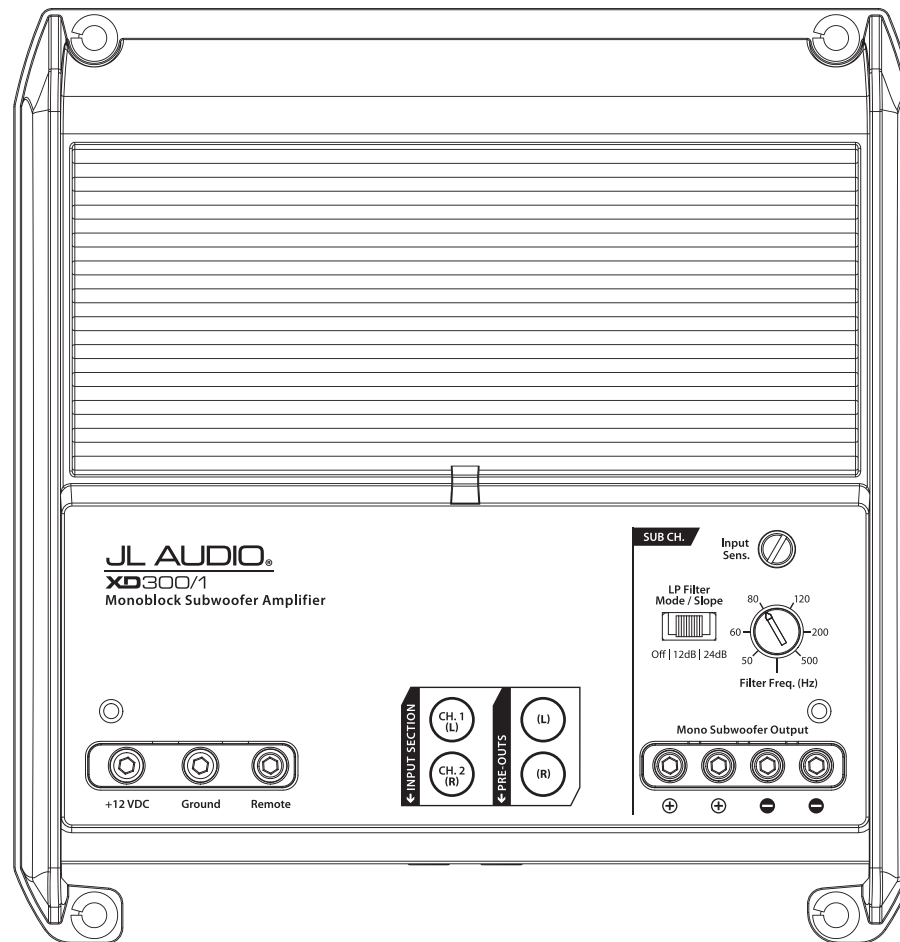


BOM ID	Qty	SKU	Description
1	1	151140	3/8-16 U - Nut
2	3	151354	1" OD x 17/32" ID x 1/2" Steel Spacer
3	1	153640	3/8-16 x 2.5" Set Screw
4	1	151126	3/8" x 1-1/4" Fender Washer
5	1	151095	3/8" Flat Washer
6	1	151081	3/8" Lock Washer
7	1	151406	3/8" Nut
8	2	153641	M8 - 1.25mm Thread Nut
9	2	153644	M8 Lock Washer
10	2	153643	M8 - 16mm Dia. Washer
11	2	153642	M8 - 24mm Dia. Washer
13	2	153645	M8 - 70mm Set Screw
14	1	153646	Plastic Plug - 7/8" Hole
15	1	64617	Mustang SB

Not shown: 1 150835 Trim Panel

POWER RECOMMENDATION

JL Audio recommends high quality amplifiers such as the JL Audio XD300/1v2. The diagram below shows the recommended crossover settings for the XD300/1v2. For a detailed description of the amplifier settings, consult the owner's manual for the amplifier. If another amplifier is being used, please reference this illustration and use similar settings on that amplifier.



CONNECTIONS

Using quality power, signal, and speaker wire is essential in ensuring the performance of your Stealthbox®. JL Audio recommends using a 4 AWG power kit such as the XD-PCS4-1B for your Stealthbox® amplifier. Other kits are available should you be using more than one amplifier. Signal wire such as the JL Audio Premium Audio Interconnect Cables should be used to provide signal for both channels of the amplifier. JL Audio recommends using 12AWG speaker wire for subwoofers such as our XC-BCS12-25.



STEP 1

Empty out the trunk of the vehicle.

Some models are not equipped with the pictured factory subwoofer.



STEP 2

Remove the cargo net hooks from both sides of the trunk sill panel.



STEP 3

Carefully unclip the trunk sill panel, and remove the panel from the vehicle.

Remove the cargo floor panel from the vehicle.



STEP 4

Remove the clip holding the top of the trunk liner to the vehicle on the passenger side.



STEP 5

Note: Steps 5-13 are only necessary in vehicles equipped with the factory subwoofer. If vehicle does not have the factory subwoofer, skip to Step 14.

Remove the three T-20 Torx screws securing the lower trim panel to the factory subwoofer enclosure, and remove the trim panel.



STEP 6

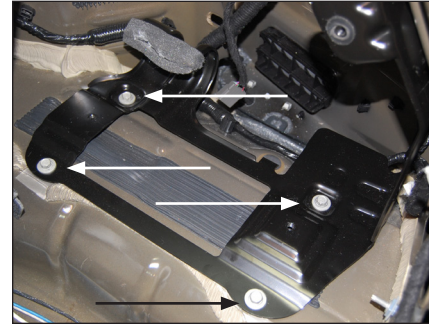
Remove the two 13 mm bolts securing the bottom of the factory subwoofer enclosure to the subwoofer enclosure bracket. Remove the T-40 Torx bolt securing the top of the factory subwoofer enclosure to the subwoofer enclosure bracket.

Unplug the subwoofer, and remove the enclosure from the vehicle.



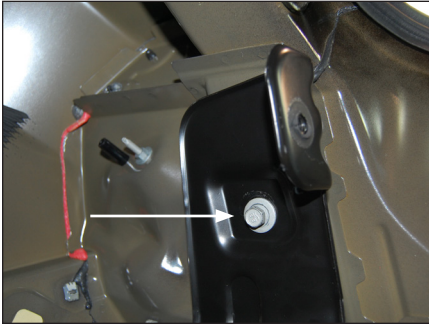
STEP 7

Pull the trunk liner away to gain access to the subwoofer enclosure bracket.



STEP 8

Remove the four indicated lower subwoofer enclosure bracket bolts.



STEP 9

Remove the indicated upper subwoofer enclosure bracket bolt.



STEP 10

Remove the subwoofer enclosure bracket from the vehicle.



STEP 11

Fold the trunk liner flap out of the way to expose one of the factory threaded holes in the floor.

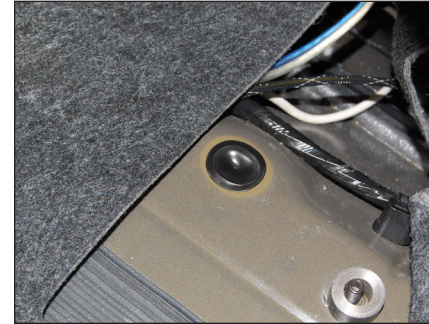
Thread an M8 - 70 mm Set Screw into the factory threaded hole. Place a 1" OD x 1/2" Steel Spacer over the screw, and thread the M8 - 70 mm Set Screw until the top is flush with the 1" OD x 1/2" Steel Spacer.



STEP 12

Fold the trunk liner flap out of the way to expose the other factory threaded hole in the floor.

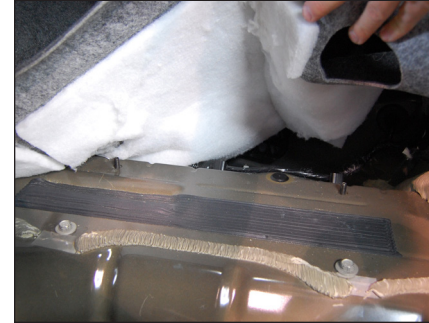
Thread an M8 - 70 mm Set Screw into the factory threaded hole. Place a 1" OD x 1/2" Steel Spacer over the screw, and thread the M8 - 70 mm Set Screw until the top is flush with the 1" OD x 1/2" Steel Spacer.



STEP 13

Press the Plastic Plug into the factory hole in the floor.

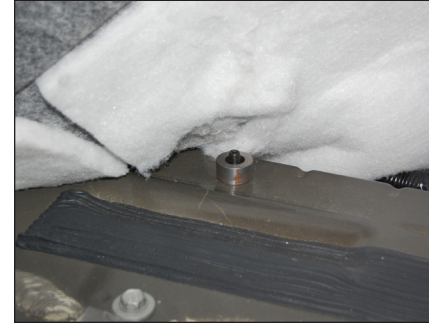
Use a heat gun to soften the Plastic Plug, allowing it to take the shape of the factory hole. It may be necessary to add silicone adhesive to hold the Plastic Plug in place.



STEP 14

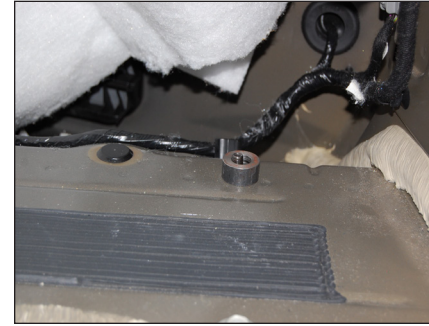
Note: Steps 14-18 are only necessary in vehicles not equipped with the factory subwoofer. If vehicle does have the factory subwoofer, skip to Step 19.

Lift up the trunk liner, and locate the two factory threaded holes in the floor.



STEP 15

Thread an M8 - 70 mm Set Screw into one of the factory threaded holes. Place a 1" OD x 1/2" Steel Spacer over the screw, and thread the M8 - 70 mm Set Screw until the top is 1/4" above the top of the 1" OD x 1/2" Steel Spacer.



STEP 16

Thread an M8 - 70 mm Set Screw into the other factory threaded hole. Place a 1" OD x 1/2" Steel Spacer over the screw, and thread the M8 - 70 mm Set Screw until the top is 1/4" above the top of the 1" OD x 1/2" Steel Spacer.



STEP 17

Fold the trunk liner back down against the M8 - 70 mm Set Screws, and cut a small "X" in the trunk liner over each of the screws.



STEP 18

Push the trunk liner into position, allowing the two M8 - 70 mm Set Screws to pass through the cuts made in the trunk liner in the previous step.



STEP 19

Note: Steps 19-27 are necessary for all models.

Slide a 3/8 - 16 U-Nut over the hole in the brace near the passenger side taillight harness, as shown.

If a factory U-nut is already installed in this location, it will need to be removed and replaced with the 3/8 - 16 U-Nut.



STEP 20

Thread the 3/8 - 16 x 2-1/2" Set Screw into the 3/8 - 16 U-Nut as far as it will go.



STEP 21

Press the top of the trunk liner down against the 3/8 - 16 x 2-1/2" Set Screw, and cut a small "X" in the trunk liner over the screw.



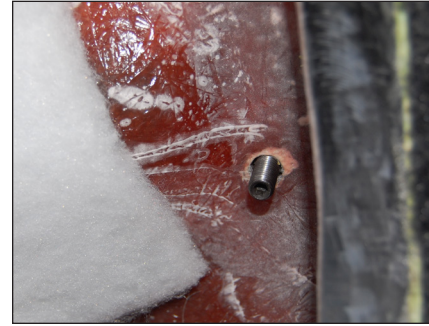
STEP 22

Place a 1" OD x 1/2" Steel Spacer over the 3/8 - 16 x 2-1/2" Set Screw, press the trunk liner down, allowing the screw to pass through the cut made in the trunk liner in the previous step.



STEP 23

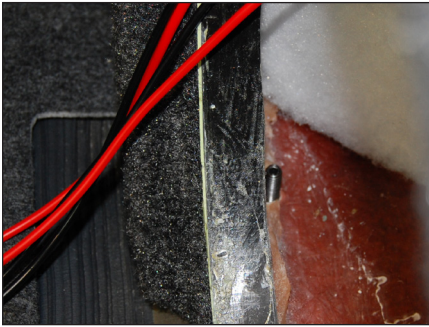
Pictured is the 3/8 - 16 x 2-1/2" Set Screw with the trunk liner back in place.



STEP 24

Remove the subwoofer from the Stealthbox®. Connect speaker cable to the terminal cup on the enclosure, and route the cable as necessary.

Guide the rear of the enclosure into position first, allowing the 3/8 - 16 x 2-1/2" Set Screw to pass through the hole in the back of the enclosure.

**STEP 25**

Guide the enclosure into position, aligning the two holes in the bottom of the enclosure with the two M8 - 70 mm Set Screws.

Back out the two M8 - 70 mm Set Screws, allowing them to pass through the holes in the bottom of the enclosure, until approximately 3/4" is exposed.

**STEP 26**

Slide a 3/8" x 1-1/4" Fender Washer, a 3/8" Flat Washer, a 3/8" Lock Washer, and a 3/8 - 16 Nut over the 3/8 - 16 x 2-1/2" Set Screw at the back of the enclosure.

Slide an M8 - 24 mm Washer, an M8 - 16 mm Washer, an M8 Lock Washer, and an M8 - 1.25 mm Nut over each of the M8 - 70 mm Set Screws at the bottom of the enclosure.

Tighten all hardware.

**STEP 27**

Reinstall the subwoofer. Reinstall the trunk liner clip above the Stealthbox®. Reinstall the trunk sill panel, cargo net hooks, and trunk floor panel.

**STEP 28**

Note: Step 28 is only necessary in vehicles equipped with the factory subwoofer.

Secure the Trim Panel to the trunk floor in front of the enclosure, as shown.

CONGRATULATIONS!

You have completed the installation for this model! Enjoy your new Stealthbox®!

**MID/HIGH FREQUENCY DRIVER FITMENT**

A variety of JL Audio coaxial and component systems will fit in the factory speaker locations of your vehicle.

Front Speaker Size / Location: 6-1/2" - Front Doors

Fits JL Audio Models: TR650-CXi, TR650-CSi, C2-650x, C2-650, C3-650, C5-650x, C5-650, & ZR650-CSi

Rear Speaker Size / Location: 6-1/2" - Rear Deck

Fits JL Audio Models: TR650-CXi, TR650-CSi, C2-650x, C2-650, C3-650, C5-650x, C5-650, & ZR650-CSi



JL AUDIO® | How we play.™    

(954) 443-1100

www.jlaudio.com

All specifications are subject to change without notice. "JL Audio" and the JL Audio logo, and "Stealthbox" and the Stealthbox logo are registered trademarks of JL Audio, Inc. "Ahead of the Curve," its respective logo, and "How we play" are trademarks of JL Audio, Inc.

Printed in USA • ©2016 JL Audio, Inc. • For more detailed information please visit us online at www.jlaudio.com.

JLA-SKU# 011432 • ver. 11.03.2016 • 10369 NORTH COMMERCE PARKWAY • MIRAMAR, FLORIDA • 33025 • USA