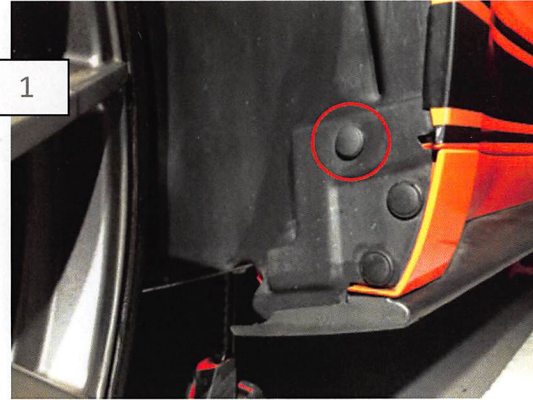


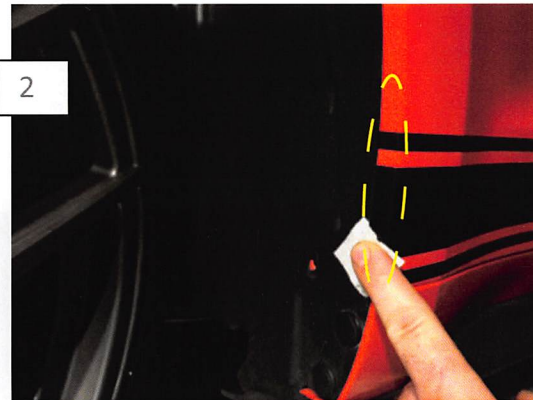
# 15-17 Splash Guards

REQUIRED Flat Screw Driver Jack and Jack Stands  
 Drill and Bits

## Front Splash Guards



1  
 Raise and support the front of the vehicle. Turn wheel for better accessibility to the mounting locations. Begin by removing the factory push pin circled above.



2  
 Using the supplied alcohol wipe clean the mounting location allow time for the surface to dry. Then apply the supplied adhesion promoter and allow it to haze.



3  
 Peel off the tape backing. Position the Splash Shield and secure with the supplied push pin. Apply firm even pressure on the double sided tape to ensure proper adhesion.

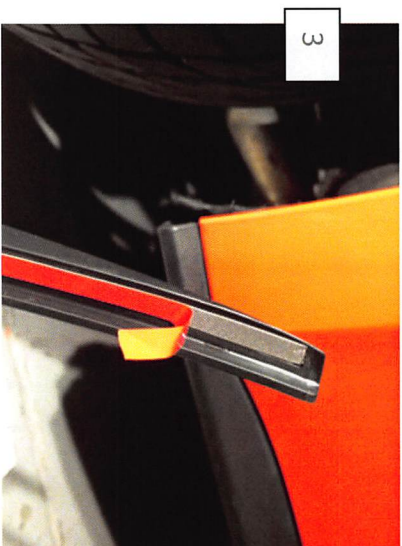


4  
 With the Splash Shield mounted, you can now drill the additional mounting holes. Begin by drilling a 1/4" hole through the Splash Shield into the fender liner. Install the supplied push clip.

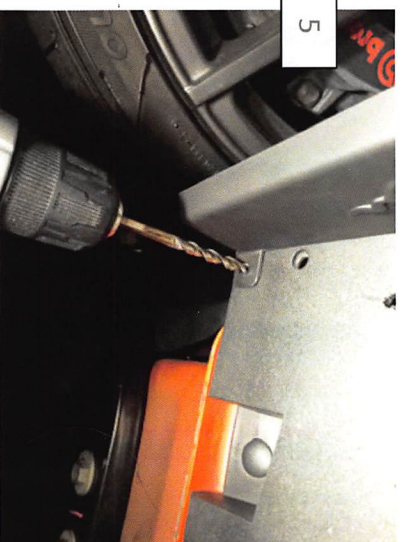
## Rear Splash Guards



Raise and support the rear of the vehicle. Remove the factory splash shield retaining clip.



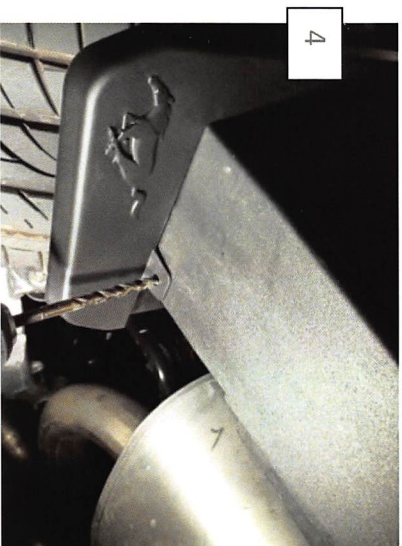
Remove the tape backing and mount the splash shield with the supplied push pin. Apply firm even pressure to the taped surface to ensure proper adhesion.



Now access the bottom of the rocker, drill the final mounting location with a 1/4" drill bit. Install the supplied push clip.



Clean the tape mounting surface with the supplied alcohol wipe. Allow time for the surface to dry. Then apply the supplied adhesion promoter and allow it to haze.



From below, drill the addition mounting location using a 1/4" drill bit. Mount using the supplied push clip.