



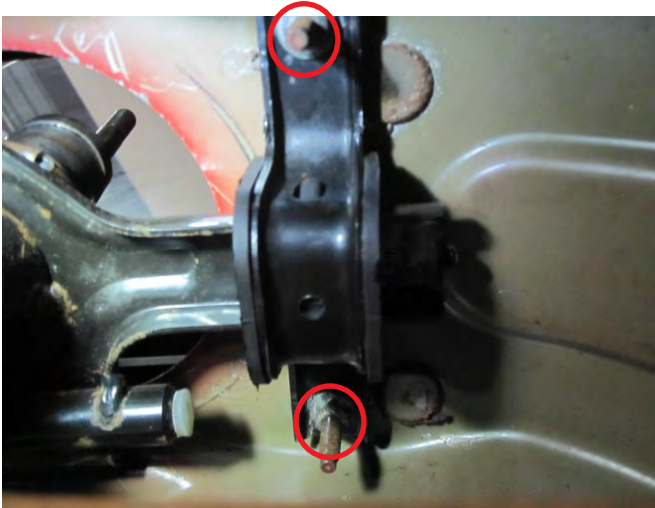
Sport Short Throw Shifter 05-10 TR-3650

Contents:

- (1) - Shifter Base
- (1) - Shifter Handle
- (2) - Plastic Bushings
- (2) - Rubber Bushings
- (1) - 15mm Nut
- (6) - M6x1.0x15mm Screws
- (6) - M6 Lock Washers
- (6) - M6 Flat Washers

Tools Needed:

Basic Hand Tools



Step 1:

Safely raise and support the vehicle with a lift, or jack and jack stands. Locate, and remove the (2) 10mm mounting nuts on the rear shifter bracket.



Step 2:

Remove the 13mm shifter arm nut located on the bottom of the shifter handle.



Step 3:

Remove the 10mm bolt that secures the shifter arm to the transmission.



Step 4:

Remove the shift knob by turning it counter clockwise. Then remove the shifter bezel by pulling up on the edges to release the mounting tabs.



Step 5:
Remove the lower shift boot by pulling up.



Step 6:
Maneuver the shifter forward, pull back and up through the opening to remove it from the vehicle.



Step 7:
Remove the rubber bushings from the factory shifter arm, and insert them in the new SR Performance shifter arm.

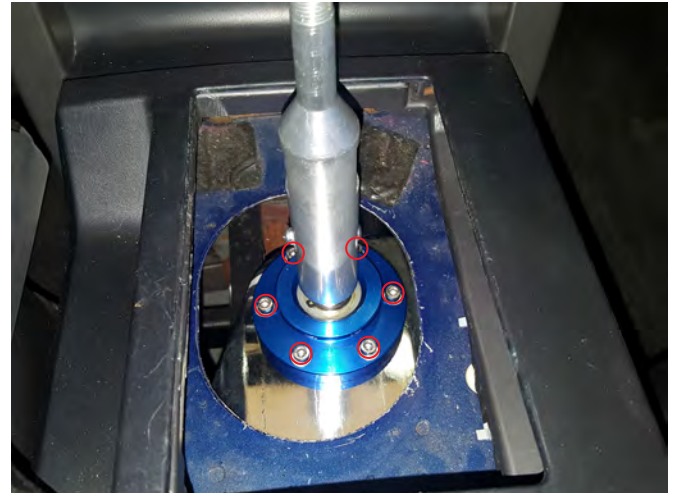


Step 8:
Insert the SR Performance shifter into the body opening, and place it with the mounting bracket towards the rear of the vehicle. Install the (2) rubber bushings in-between the base of the shifter and the body of the vehicle. Secure the rear part of the shifter base using the (2) 10mm factory nuts.



Step 9:

Install the factory 10mm bolt securing the shifter arm to the transmission.



Step 10:

Install the shifter handle to the base using the (6) M6 allen screws, lock washers, and flat washers.



Step 11:

Insert the (2) plastic bushings onto the lower shifter handle. Insert the transmission arm bolt through the shifter handle, and tighten with the supplied 15mm nut. Torque to 20 ft-lbs.



Step 12:

Reinstall the factory lower shift boot, and shifter bezel. Reinstall the shift knob by threading it clockwise until tight and facing the correct direction.