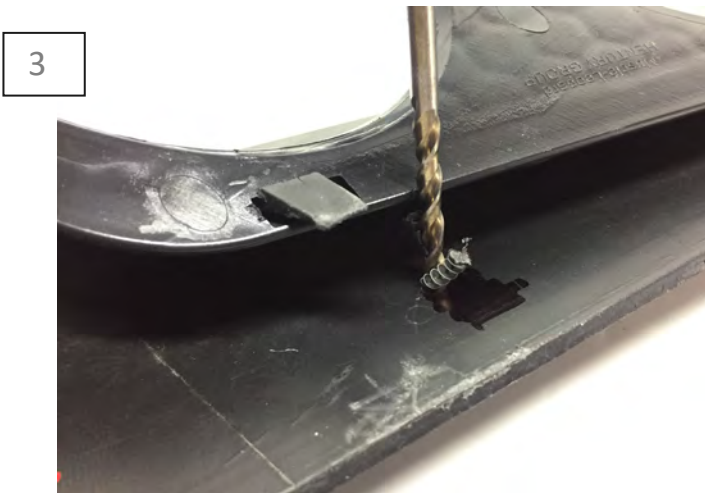




1
Begin by locating the mounting locations for the Quad Tips. The upper (2) mounts are screw bosses. The bottom (2) mounting locations will need to be marked and drilled.



2
Secure the Quad Tips to the upper mounting locations using the provided screws. ****Note:** Do not over tighten the screws. Doing so can pull the threads out of the bosses.



3
Using scribe, mark the locations of the lower mounting holes. Remove the Quad Tips and drill the scribed holes to



4
Install the Quad Tips using the supplied hardware. Place the screw through the diffuser so that the nut is on the hidden side of the diffuser. ****Note:** Do not over tighten the screws. Doing so can pull the threads out of the bosses.