

MP CONCEPTS

Contents:

- (1) Pair Fender Flare LH&RH (4 Pieces)
- (1) 3/8" Wide Tape Roll
- (1) 7/16" Wide Tape Roll

Front Fender Flares



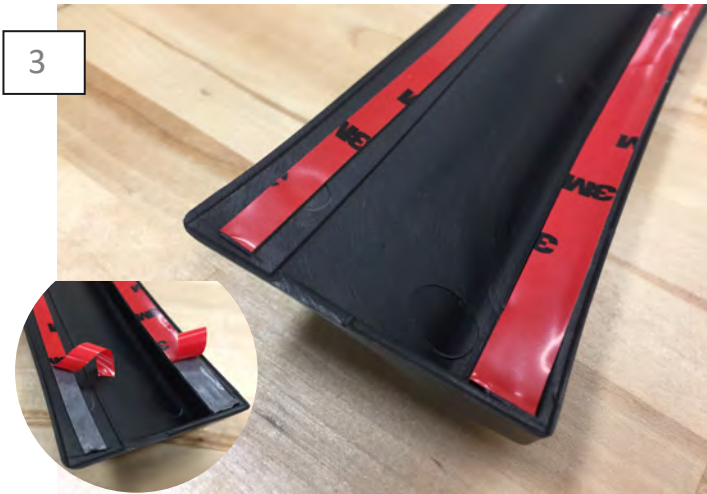
1

Begin by thoroughly cleaning the front fenders and inner fender lip with soap and water. Allow time for the bumper to dry. Using isopropyl alcohol to remove any wax or grease is highly recommended. Apply the isopropyl alcohol to a clean tint free cloth and wipe the paint surface.



2

Before installing the flares, test fit the flares to familiarize yourself with where they fit best. **Note: the back of the parts are labeled R1 and R2 for the right side. L1 and L2 for the left side.



3

Apply the supplied 3M tape to the back of the flares, please note the tape width location as seen above. Test fit the part again before peel back the leading edges of each piece of tape, do not fully remove the tape backing.



4

Hold the flares in place. With the flare in position, peel the tape backing as you lightly apply pressure to hold the flare in place. Once the tape backing is fully removed, apply firm even pressure to the tape surfaces to ensure proper adhesion.

MP CONCEPTS

Contents:

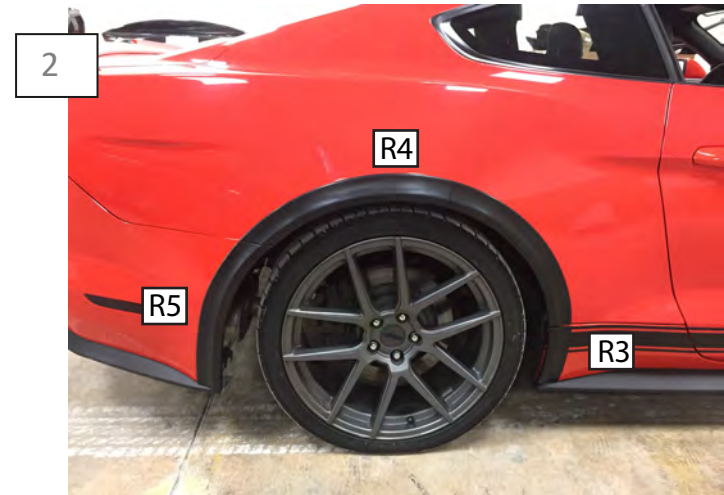
- (1) Pair Fender Flare LH&RH (6 Pieces)
- (2) 3/8" Wide Tape Roll
- (2) 7/16" Wide Tape Roll

Rear Fender Flares



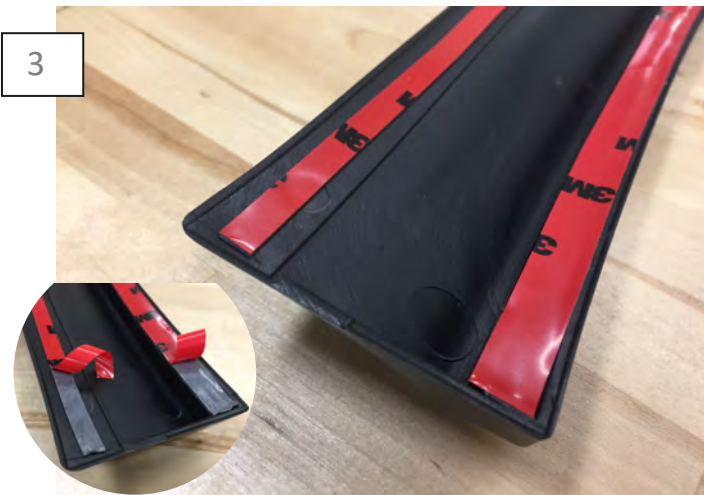
1

Begin by thoroughly cleaning the Rear fenders and inner fender lip with soap and water. Allow time for the bumper to dry. Using isopropyl alcohol to remove any wax or grease is highly recommended. Apply the isopropyl alcohol to a clean tint free cloth and wipe the paint surface.



2

Before installing the flares, test fit the flares to familiarize yourself with where they fit best. **Note the back of the parts are labeled R3, R4, and R5 for the right side. L3, L4, and L5 for the left side.



3

Apply the supplied 3M tape to the back of the flares, please note the tape width location as seen above. Test fit the part again before peel back the leading edges of each piece of tape, do not fully remove the tape backing.



4

Hold the flares in place. With the flare in position, peel the tape backing as you lightly apply pressure to hold the flare in place. Once the tape backing is fully removed, apply firm even pressure to the tape surfaces to ensure proper adhesion.