

Jacking Rails - Black (15-18)

Contents:

- (1) Driver Side Rail
- (1) Passenger Side Rail
- (8) M10x1.5x25mm Bolts

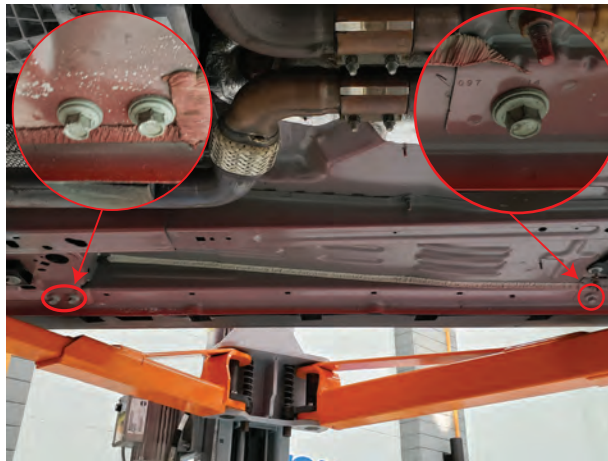
Tools Needed:

- Jack & Jack Stands
- 15mm Socket
- Ratchet
- Scraper



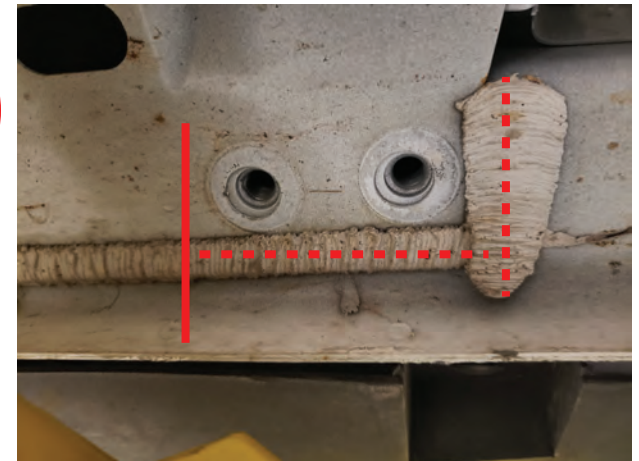
Step1\\

Identify the appropriate jacking rail. The end with the bolt holes that are closest together is the front. The end with the bolt holes with most space between is the rear. Driver side is longer than the passenger side.



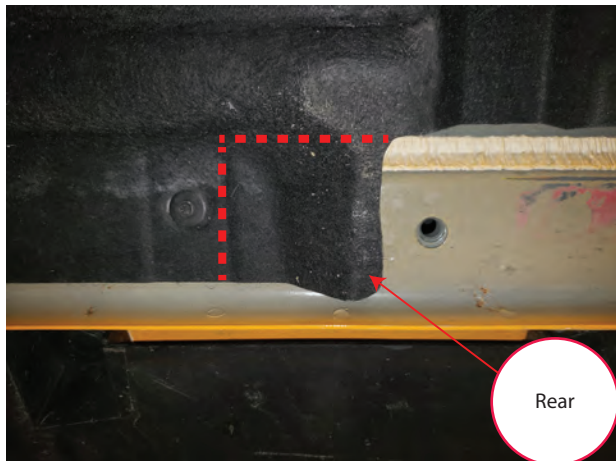
Step2\\

Carefully raise and support the vehicle using a jack & jack stands to gain access underneath the vehicle. Locate, and remove the (3) 15mm body bolts on the passenger side of the vehicle.



Step3\\

With the front (2) 15mm bolts removed, use a scraper to scrape off the front section of the seal seam. This will ensure the jacking rails fit flush with no gaps. **Note: Be careful not to scrape too deep. Use the dotted lines shown above as a reference where to scrape.



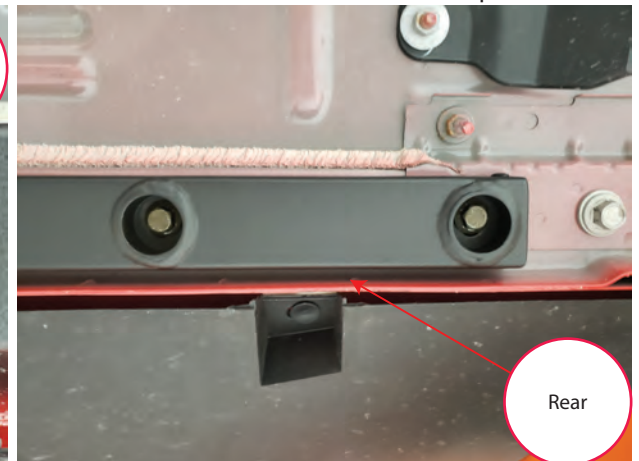
Step4\\ Caution:

Certain model vehicles may have a passenger side exterior floor pan cover. If your vehicle is equipped with this cover, you will need to trim the rear section of the cover for jacking rails to fit properly. Use the dotted line above as a reference where to cut.



Step5\\

Align the passenger side rail (shorter rail) with the front body mount holes. Insert the (2) supplied M10x1.5x25mm bolts to secure the rail to the body.



Step6\\

Align the rail with the back body mount holes. Insert the (2) M10x1.5x25mm bolts to secure the rail to the body.



Step7

Repeat the steps to do the same for the driver side.
Installation is now complete.