

2015+ Rear Spoiler

Tools Required: - Phillips Head Screw Driver - 1/4", 7/32" Drill Bits & Drill
- Painters Tape - Trim Panel Removal Tool

Contents: 2 - Spoilers 8 - Templates 4 - M6x1.0x15mm Screw
1 - Middle Panel 4 - M6x1.0x25mm Screws Alcohol Pads
2 - Spoiler Brackets 4 - M6x1.0x20mm Screws Adhesion Promoter



1

Install the side bracket to the spoiler using (2) M6x1.0x25mm Phillips head screws, and flat washers. The brackets are marked L or Left, and R for Right.



2

Remove the center adhesive backing of the supplied drill templates. Place the adhesive side on the spoiler, centering it over the bolt holes.



3

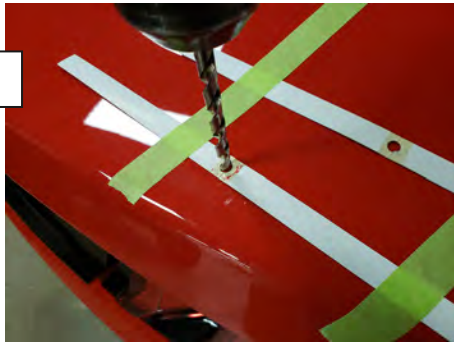
If equipped with a factory spoiler, remove the trunk lid trim panel. Remove the (9) push clips, and (2) rubber bumpers. With the panel removed, loosen the bolts securing the spoiler. Remove the rubber covers (circled in green above) to gain access to the remaining spoiler bolts. The spoiler is also held on with tape. Carefully remove the spoiler. **** Caution: Trunk lid is very thin and dents easily. **Note: All remaining tape & residue needs to be removed prior to continuing to the next step.**



4

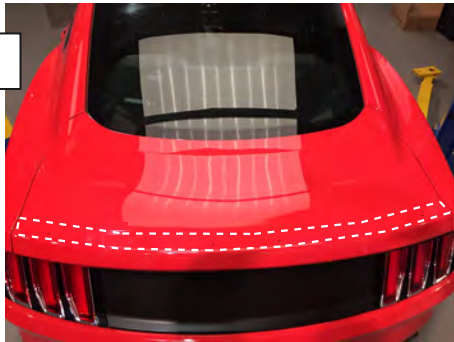
Test fit the spoiler to determine location by aligning all three pieces with the back edge of the decklid while making sure all three pieces are centered. Use the middle panel to determine the correct spacing between the two spoilers. Tape the template to the decklid where they lay. Carefully remove the spoilers from the templates. ****Note: This is the most important step so that the hole locations are drilled in the correct place.**

5



Using a drill & 1/4" drill bit, carefully drill the center of the template holes. Finish with a 7/32's drill bit on the back side. **Note: Use touch up paint to any metal to prevent rusting.

6



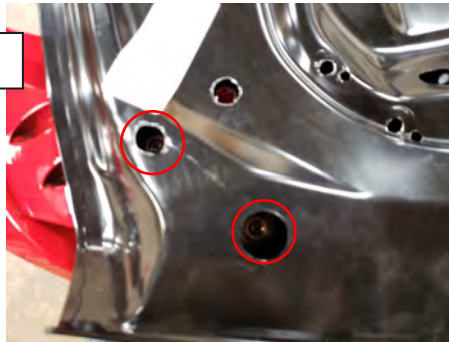
Prepare the decklid by cleaning it with the supplied alcohol pads. Allow time to dry.

7



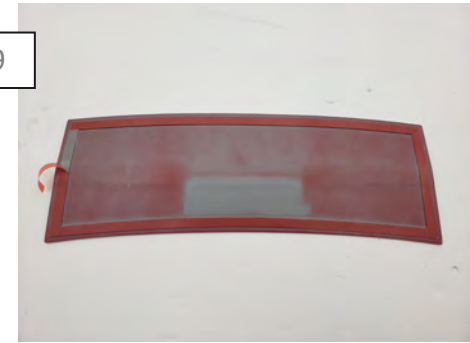
Peel back the tape backing from the mounting locations, and apply the adhesion promoter to the tape. Allow time to dry.

8



With a helper, start the (2) M6x1.0x20mm screws with washers on the outer spoiler mount, and (2) M6x1.0x15mm screws with washers in the inner spoiler mount to hold the spoiler in place. Apply firm even pressure to tapped surfaced to ensure proper adhesion. Do the same for the opposite side spoiler. **Note: It's recommended to use a magnetic screw driver to prevent dropping hardware into the decklid.

9



**NOTE: Middle panel is optional to customers who did not have a factory spoiler. This panel will cover the factory middle spoiler hole locations for customer who did have a factory spoiler. Install the middle panel by removing the tape backing, and applying adhesion promoter to the tape. Allow time to dry. Insert the middle panel in-between the two spoilers. Apply firm even pressure to tapped surfaced to ensure proper adhesion.

10



Reinstall the interior decklid cover panel. Installation is now complete.