

# LED REVERSE LIGHT

(2015-2017 MUSTANG)

---

## INSTALLATION INSTRUCTIONS

### CONTENTS

---

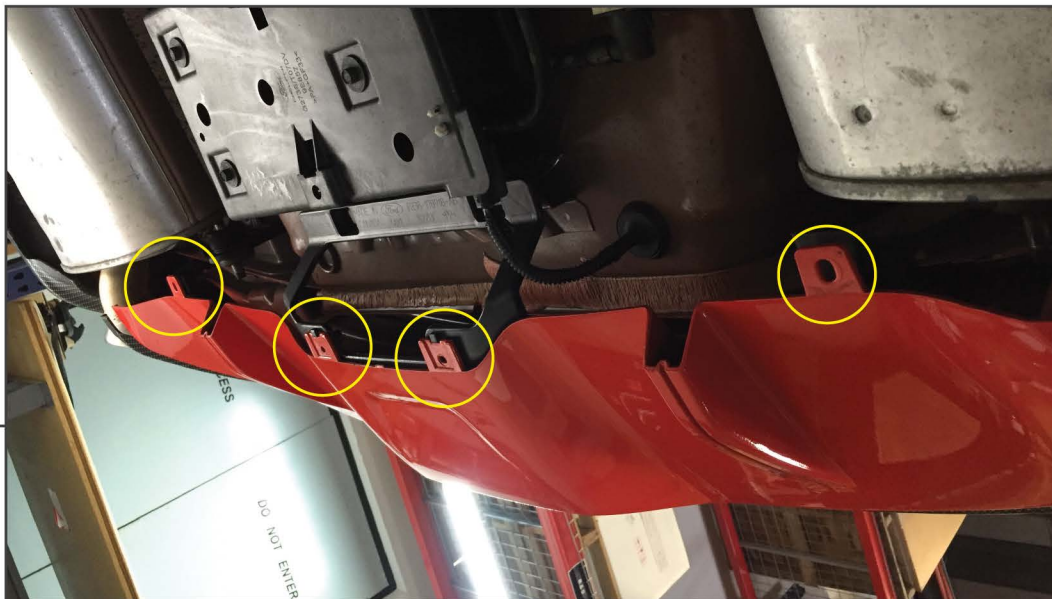
- (1) LED Reverse Light
- (2) Scotch Lock Connectors
- (4) Zip Ties

### TOOLS REQUIRED

---

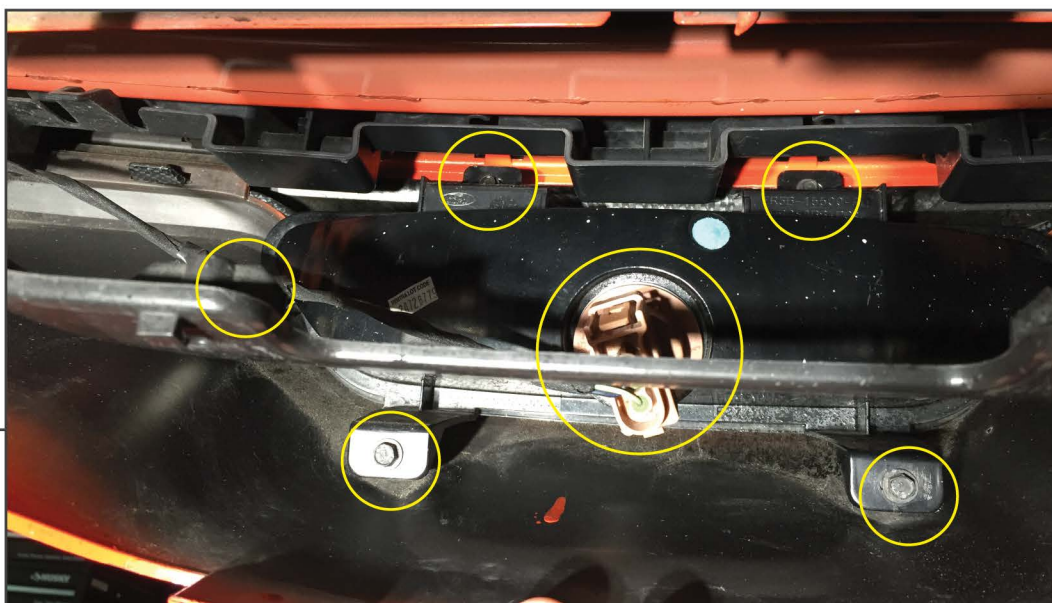
- Plastic Pry Tool
- 7, 8mm Socket at Ratchet
- Flat Head Screw Driver
- Pliers

## STEP 1



Begin by removing the (2) screws(8mm) and (2) clips securing the lower bumper valence to the vehicle.

## STEP 2



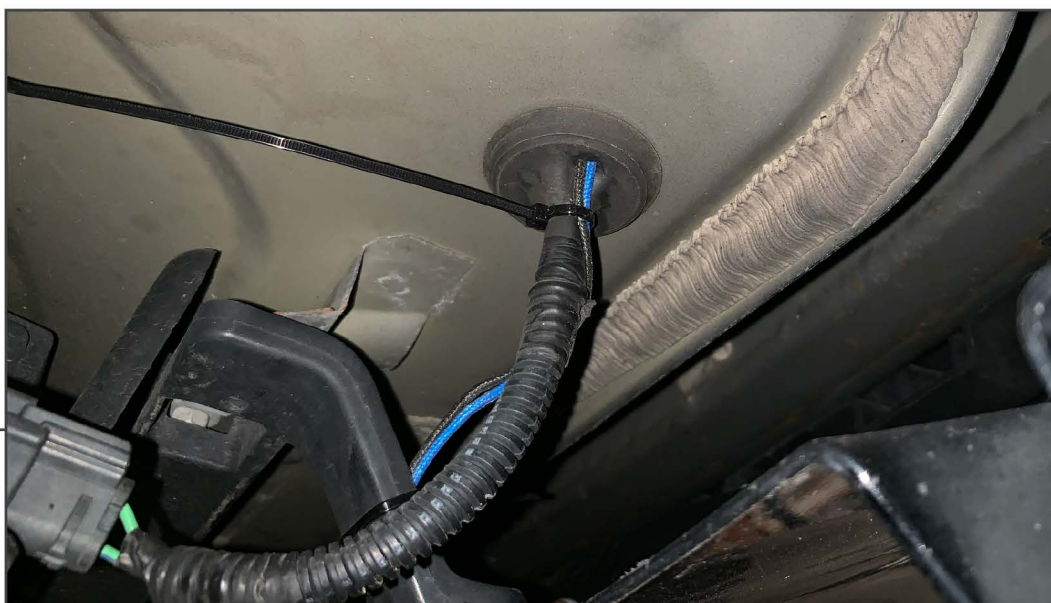
Unplug and detach the wiring harness from the factory reverse light. Pull the valence down to gain access to the (4) factory 7mm reverse light screws. Remove the screws and remove the light from the vehicle.

### STEP 3



Turn the factory bulb socket counter clockwise to remove it from the original light. Remove the bulb from the socket and install the new LED bulb plug into the socket. Install the socket into the new LED light. \*\*Note: The socket is a very tight fit. \*\*Trouble Shooting: If the light doesn't function correctly, rotate the LED plug 180\*

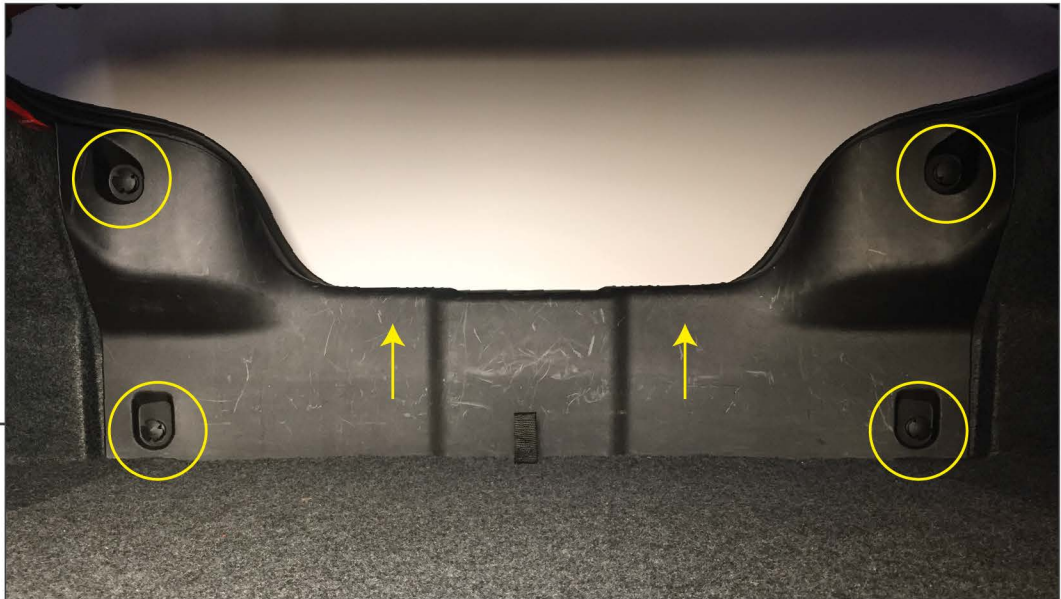
### STEP 4



Using the factory hardware reinstall the light following Steps 1 and 2 in reverse order. Route the additional wirings from the light through the body grommet located on the bottom of the spare tire well on the driver side of the vehicle. Carefully puncture the body grommet and feed the wires into the trunk.

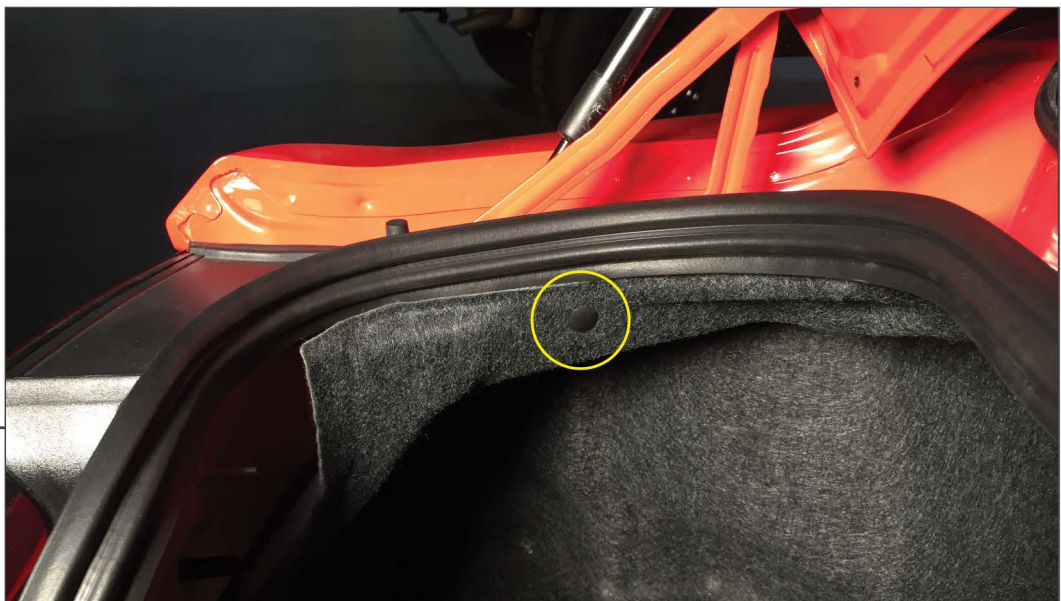


**STEP 5**



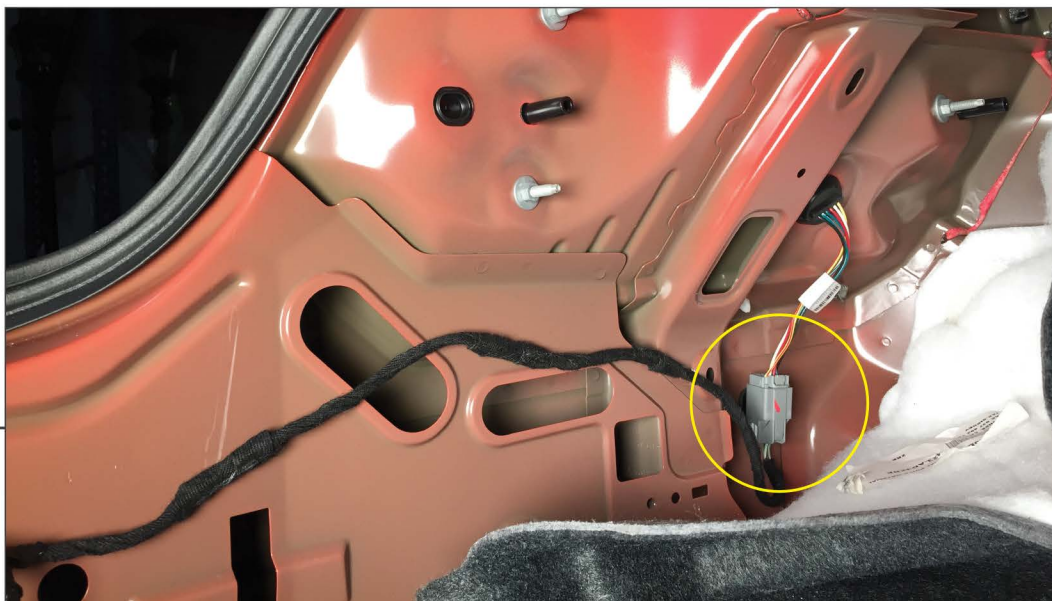
Remove the (4) fasteners securing the trunk trim in place by turning them counter clockwise. Remove the trim by pulling the sides back to clear the mounting studs and then lifting the panel up.

**STEP 6**



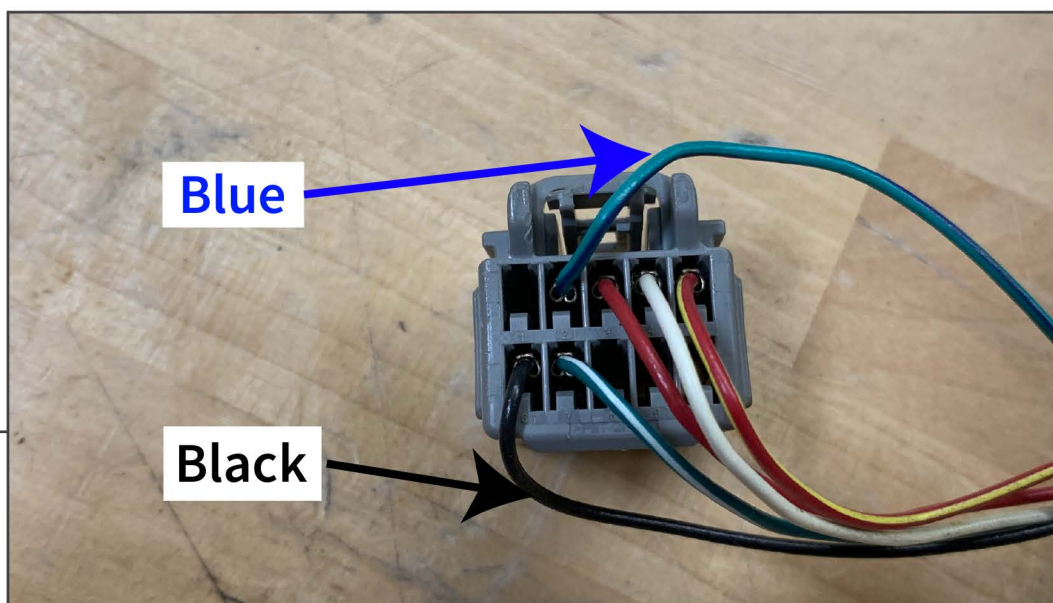
Using a panel removal tool, remove the (1) push clip securing the trunk trim in place.

**STEP 5**



Fold the trim down to gain access to the tail light harness. Disconnect the plug prior to wiring in the new light.

**STEP 6**



Using the supplied scotch lock connectors, wire the LED reverse light into the tail light wiring as follows:

Factory Wiring Harness	- LED Reverse Light
Green/Purple	- Blue
Black	- Black

Plug the tail light harness back in and then reinstall the trunk liner and panel. Installation is now complete.