



---

# SIDE SCOOPS

(2005-2009 MUSTANG ALL)

---

## INSTALLATION INSTRUCTIONS

### CONTENTS

---

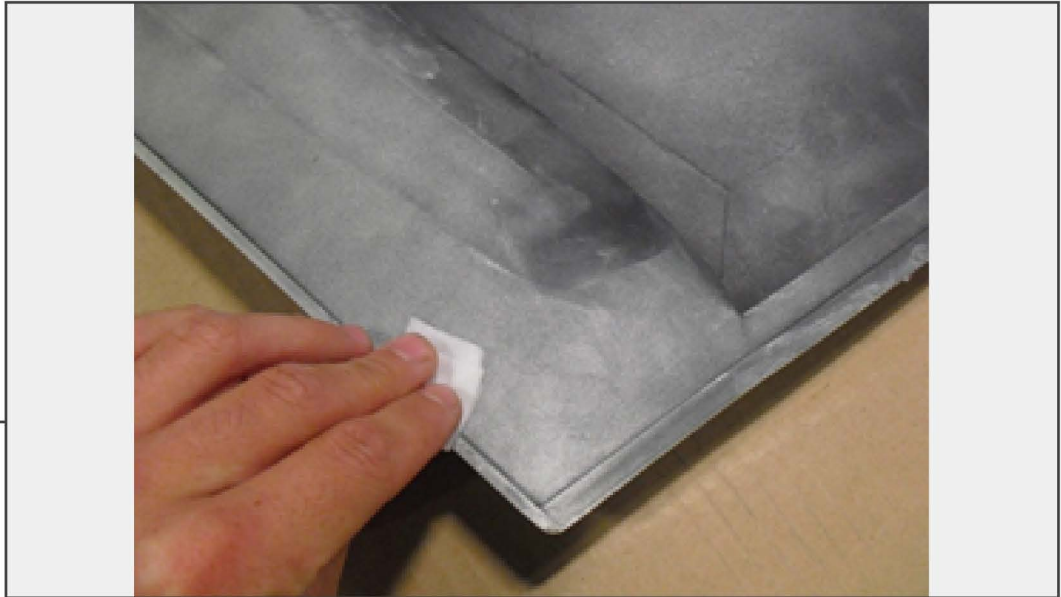
- (1) LH Side Scoop
- (1) RH Side Scoop
- (1) LH Insert
- (1) RH Insert
- (1) Tape Kit
- (2) Alcohol Pads
- (1) Adhesion Promoter

### TOOLS REQUIRED

---

- Automotive Soap/Detailer
- Microfiber Towel
- Utility Knife

**STEP 1**



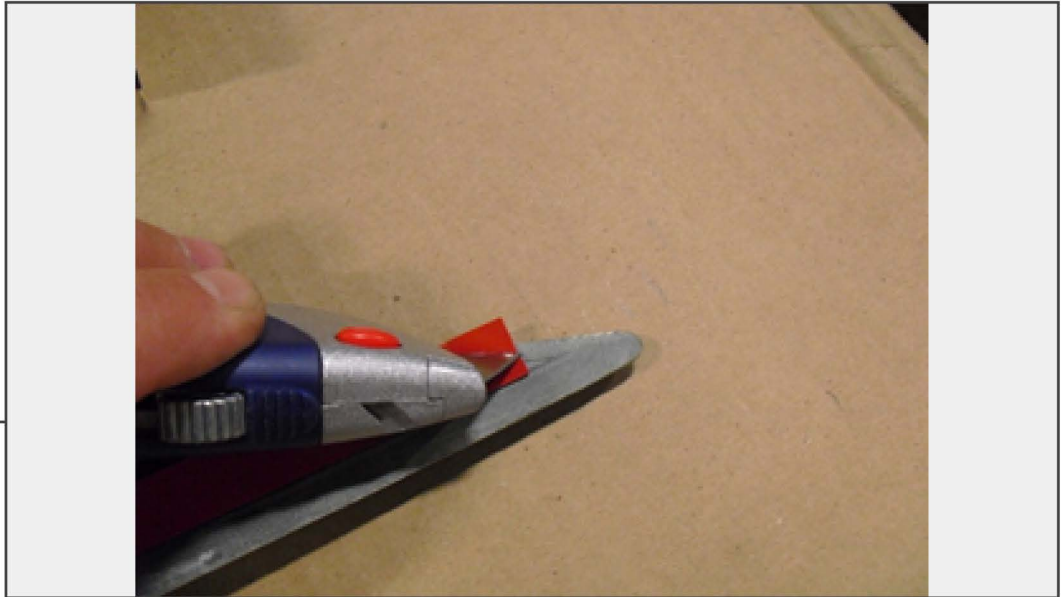
Using the supplied 3M Automotive Adhesion Promoter, thoroughly clean the surface of the side scoop where the adhesive tape will be applied.

**STEP 1B**



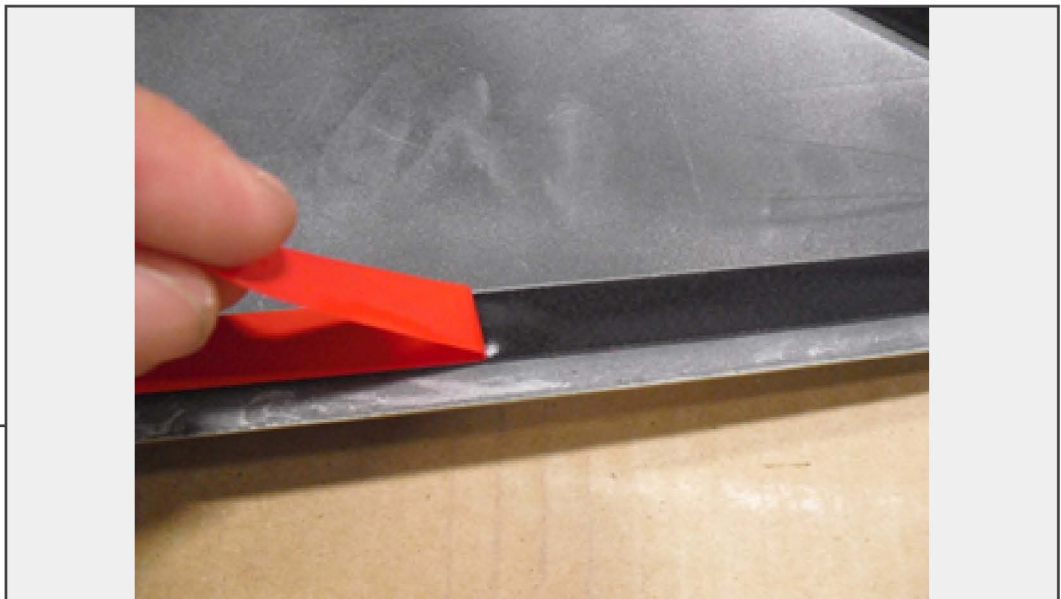
Using the supplied Alcohol Prep Pads, thoroughly clean the surface of the vehicle where the scoop will be applied. Once dry, treat the same area with the supplied adhesion promoter.

**STEP 2**



Apply the supplied adhesive tape to the outside edges of the side scoop, making sure that it is not extending past the edges. Tip: Make sure to use adhesive on outer edges of corners, this will ensure a proper fit once scoop is applied to vehicle. Use a utility knife to cut remove excess adhesive tape.

**STEP 3**



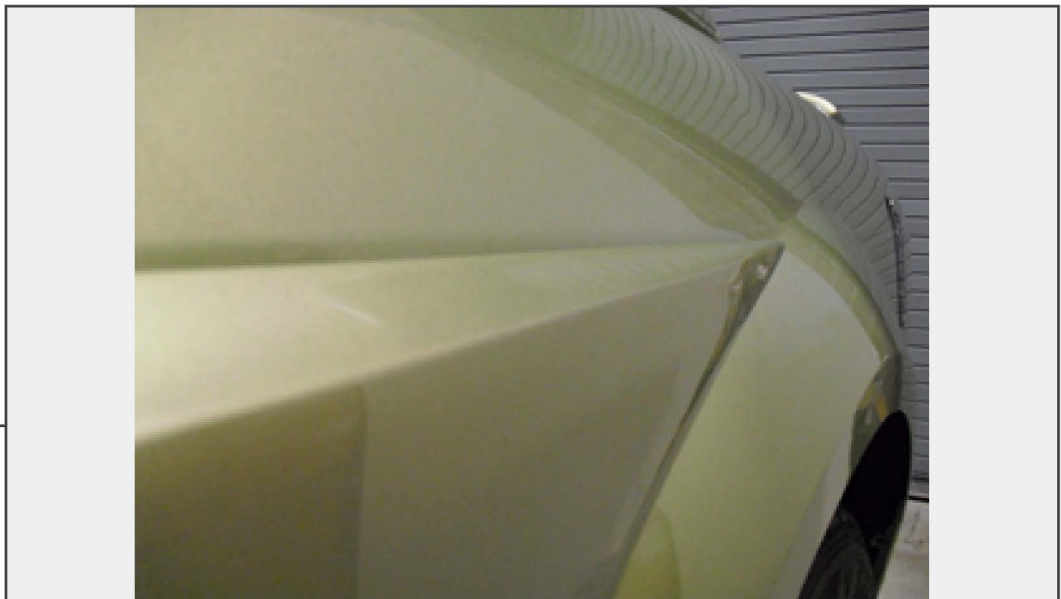
Peel backing from adhesive tape on the side scoop.

**STEP 4A**

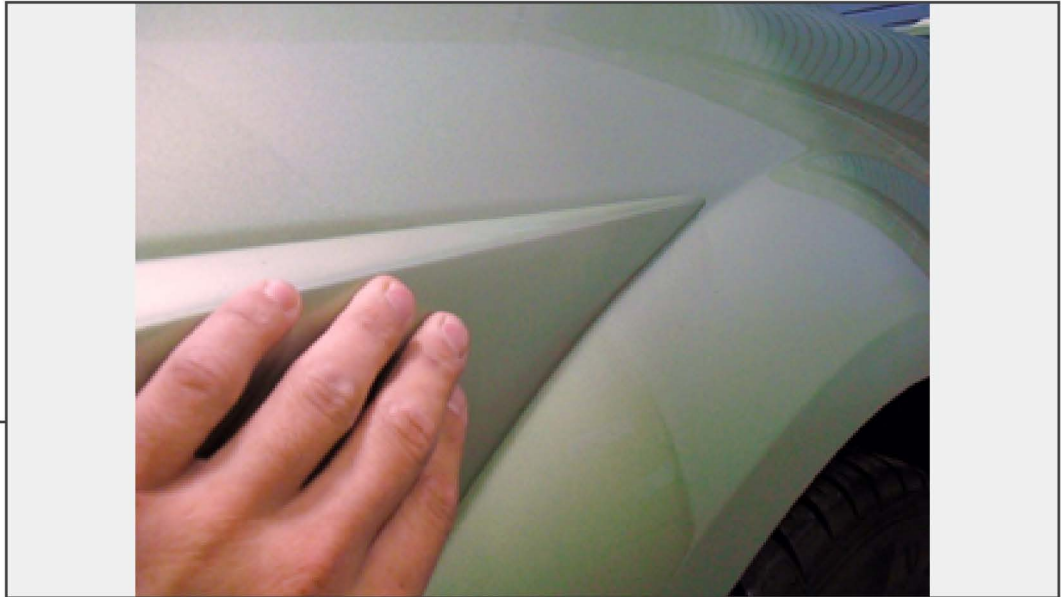


Lightly place side scoop on vehicle, taking care to align upper corner with body line and door opening as shown below.

**STEP 4B**



**STEP 5A**



When certain that scoop is properly aligned, press down firmly where adhesive tape was applied to ensure a proper fit.

**STEP 5B**



Repeat these steps for the opposite side.