

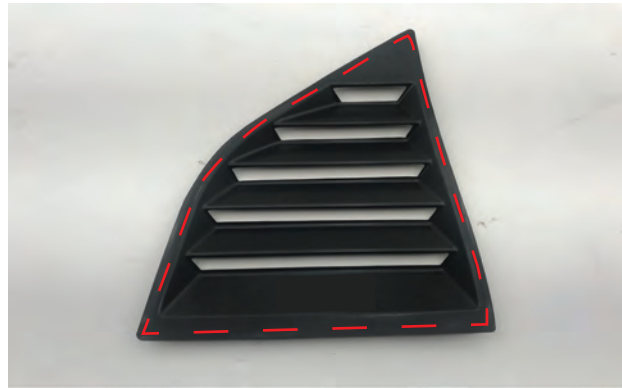
## 08-19 Challenger Quarter Window Louvers Installation Guide

### Contents:

- (2) Window Louvers
- 3M Double Sided Tape

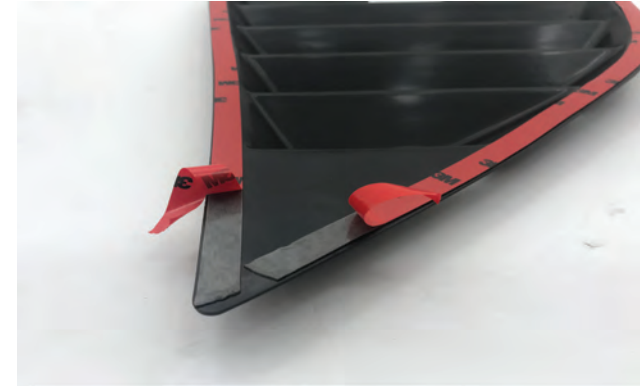
### Tools:

- Razor Blade
- Window Cleaner



### //Step 2.

Use alcohol wipes provided to clean louver surface where tape will adhere.



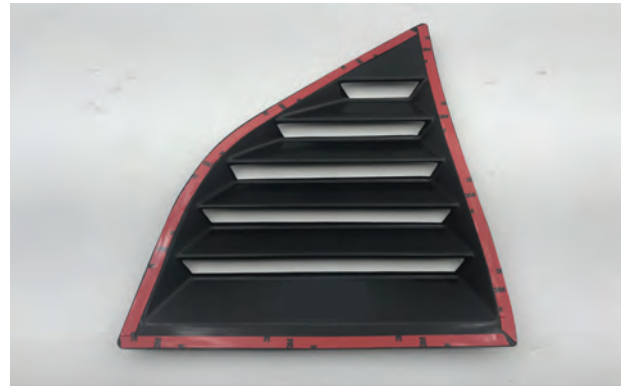
### //Step 4.

Peel off backing from double sided tape. Avoid touching the tape prior to installation. Apply louver to window.



### //Step 1.

Clean vehicle window with window cleaner within the outlined area.



### //Step 3.

Apply double sided tape to window louver, using a razor blade to cut the tape. Extend tape over louver and firmly press down, making sure it sticks on surface evenly.



### //Step 5.

Apply firm, even pressure to all taped surfaces to ensure proper adhesion.