

## **Windshield Lower Trim Moldings (83-93 all)**

**Time Needed:** about 30 min

**Tools Needed:** Phillips screwdriver



### **Removal procedure:**

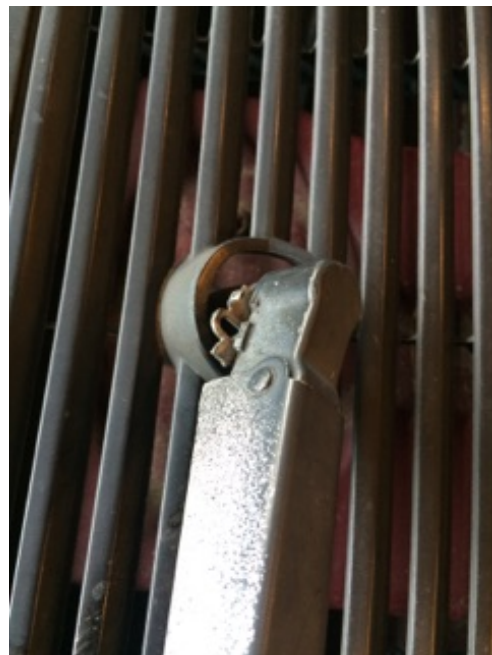
Step 1: Lift up on the passenger side windshield wiper.



Step 2: Looking at the base of the wiper you will see a tab.



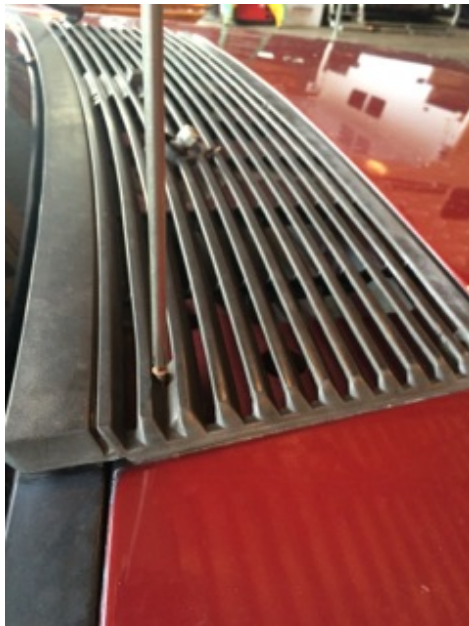
Step 2 continued: With your hands pull the tab out releasing the wiper.



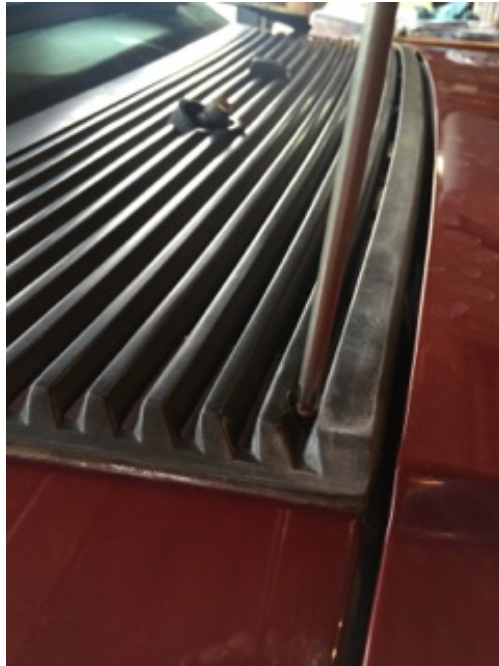
Step 3: Pull the wiper off.



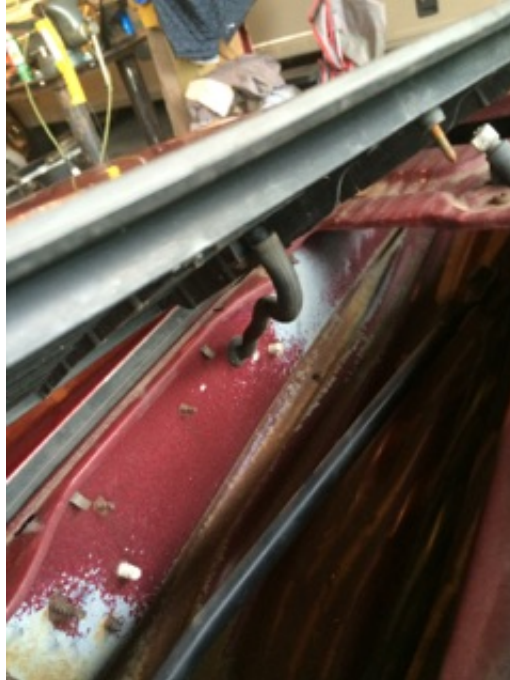
Step 4: With the screwdriver unscrew the 6 screws that hold the cowl to the car.



Step 5: Pic continued.



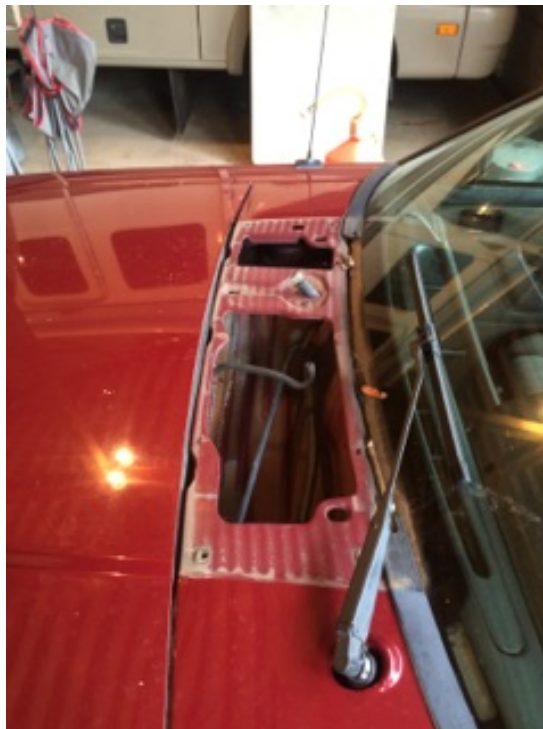
After removing the 6 screws lift the cowl up, you will see a hose going to the sprayer.



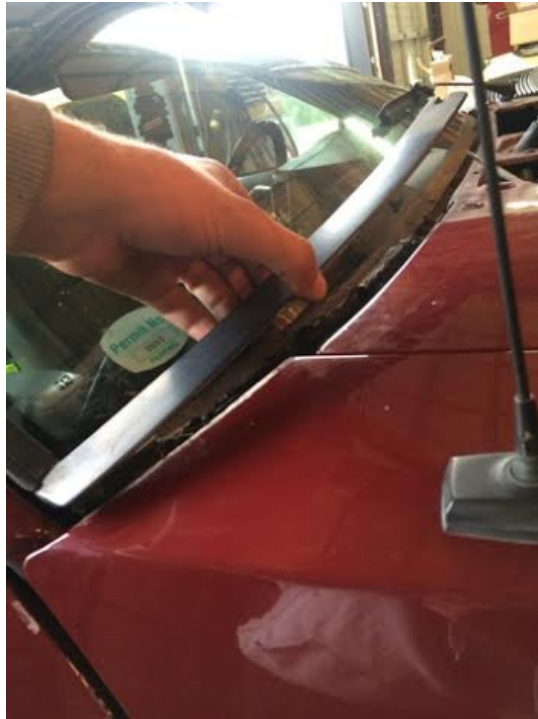
Step 6: Pull the hose off the sprayer.



Step 7: Now that the cowl is free from the car set aside.



Step 8: With the lower trim molding now fully exposed start at the end towards the center of the car and start gently prying the trim off the car.



Step 9: Next you will need to pull the lower trim-molding tab out from the side windshield trim.

Step 10: Repeat steps 8 & 9 for both sides



## Installation Procedure:

Step 1: With the new lower Trim insert the tab into the side windshield trim



Step 2: There are two tabs on new lower trim that need to be lined up with the two brackets on the car.



Step 3: With the two tabs and brackets lined up, press the trim down until it snaps into place.



Step 4: Repeat steps 1, 2, & 3 for both sides.



With both Lower trim moldings in place the cowl can now be re installed

Step 5: Re install the sprayer to the new cowl with the 1 Phillips screw.

Step 6: Place the new cowl onto the car, plug the sprayer hose back onto the sprayer.

Step 7: Line up the cowl with the screw holes and tighten the 6 screws back into the cowl.



Step 8: Take the wiper and slide it back on.

Step 9: Lift up on the end of the wiper and push the retaining tab back in.



Step 10: Enjoy



**Installation Instructions written by AmericanMuscle Customer Vance Clarke 10.30.2014**