

Outer Seat Belt Sleeve -Gray (87-93 all)

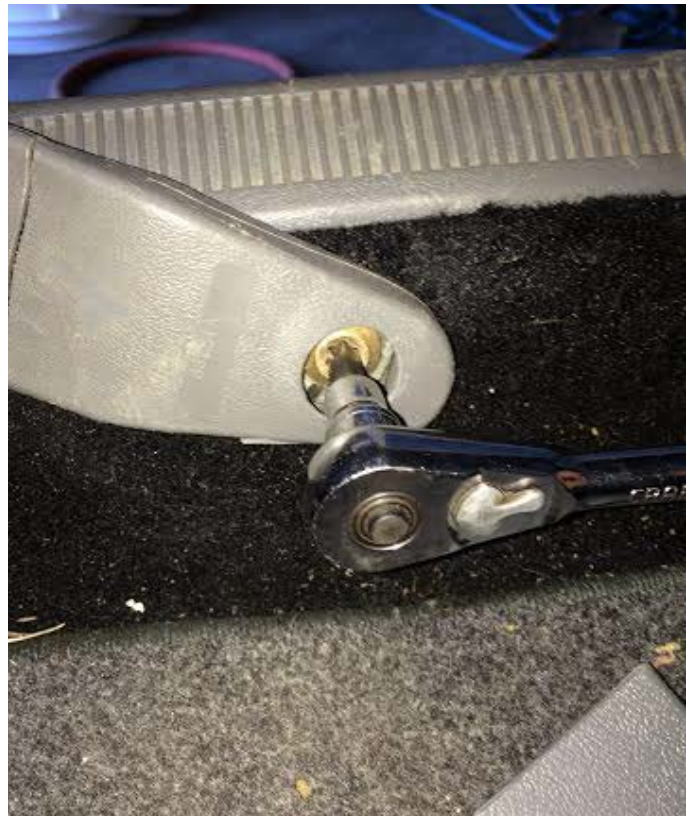
Time Needed: about 15 min

Tools Needed: Torx T50 socket and ratchet or t50 wrench and a long flathead screwdriver.



Removal Procedure:

Step 1: Using your torx t50 bit remove the bolt holding the seat belt sleeve to the floor.



Step 2: Once removed take the bolt out of the seat belt sleeve allowing the seat belt to slide out of the sleeve.



Step 3: Pull the seat belt out of the sleeve.



Install Procedure:

Step 1: Using a long flathead screwdriver push the seat belt into the new seat belt sleeve making sure the sleeve is facing the correct way.



Step 2: After the seat belt is in the new sleeve line up the hole on the end of the seat belt with the hole in the sleeve, insert the bolt and thread it back into the floor using the torx bit to tighten.



Step 3: Install is complete, enjoy your new Seat Belt Sleeve.



Installation Instructions written by AmericanMuscle Customer Vance Clarke 9.22.2014