

AMERICAN MUSCLE GRAPHICS

Installation Instructions for Vinyl Rear Valence Blackout

Tools Required:

Spray bottle with dish soap & water solution

Plastic squeegee (included)

Heat Gun or Hair Dryer

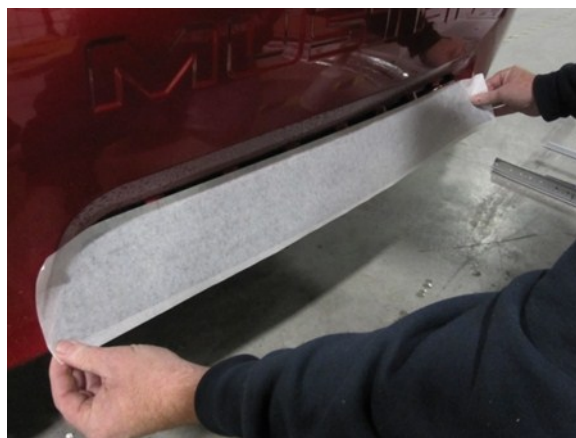
Step 1:

Thoroughly spray the rear valence with the soap and water solution.



Step 2:

Peel the vinyl away from the adhesive backing and place it on the valence panel as shown.



Step 3:

Using the supplied plastic squeegee, push any air bubbles out towards the edges of the vinyl.



Note: If you are installing matte-black vinyl, skip to Step 5. If you are installing the gloss black vinyl, it will have the adhesive on the top side as shown above.

Step 4:

At this point, soak the adhesive with the water and soap solution, wait 3-5 minutes, then peel the adhesive off.

Step 5:

Once the tape is off you can use a squeegee (covered in a cloth that will not scratch the vinyl and keep the vinyl wet) if you need to, but at this point you may need to use a pin or needle to release any bubbles, squeegeeing on vinyl that has been stuck to the surface may wrinkle instead of moving air from underneath the vinyl.



Step 6:

Use a heat gun or hair drier to slightly heat the vinyl and wrap it around the bottom edge of the bumper as shown to complete the installation.



Leave several hours, depending on climate, of dry time before cleaning car. Use a quick detailer in a spray bottle for the initial cleaning then hand wash car waiting at least several days for the first time after drying. **Do not power wash vinyl or wax vinyl.**

Customer Service: 1-866-727-1266