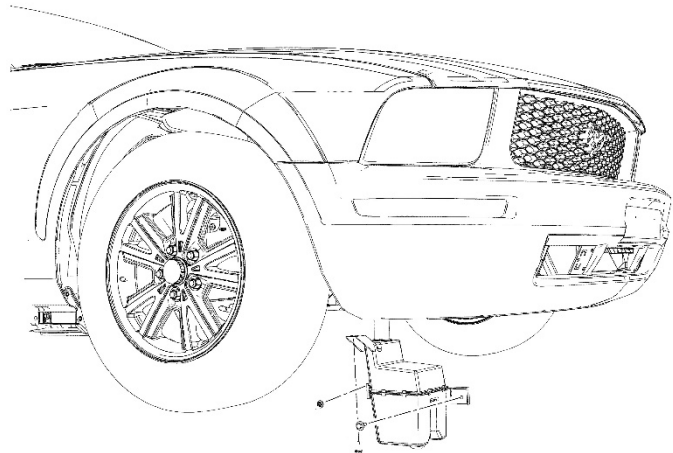


Ford Windshield Washer Fluid Reservoir (05-09 All)

Required Tools:

Drain Bucket
Flat Head Screw Driver
Jack Stands or Car Lift
Philips Head Screw Driver
Socket Wrench
 7MM Socket
 10MM Socket
Safety Glasses



Installation Time: 1-2 hours

The Windshield Washer Reservoir needs to be removed and installed from underneath the car, will not be able to be access from the top in the engine bay.

1. Make sure the car is turned off and is cool down before proceeding with the removal and installation of replacement Reservoir
2. Set Emergency Brake and block the rear wheels.
3. Put car on lift or Jack Stands

Optional Steps:

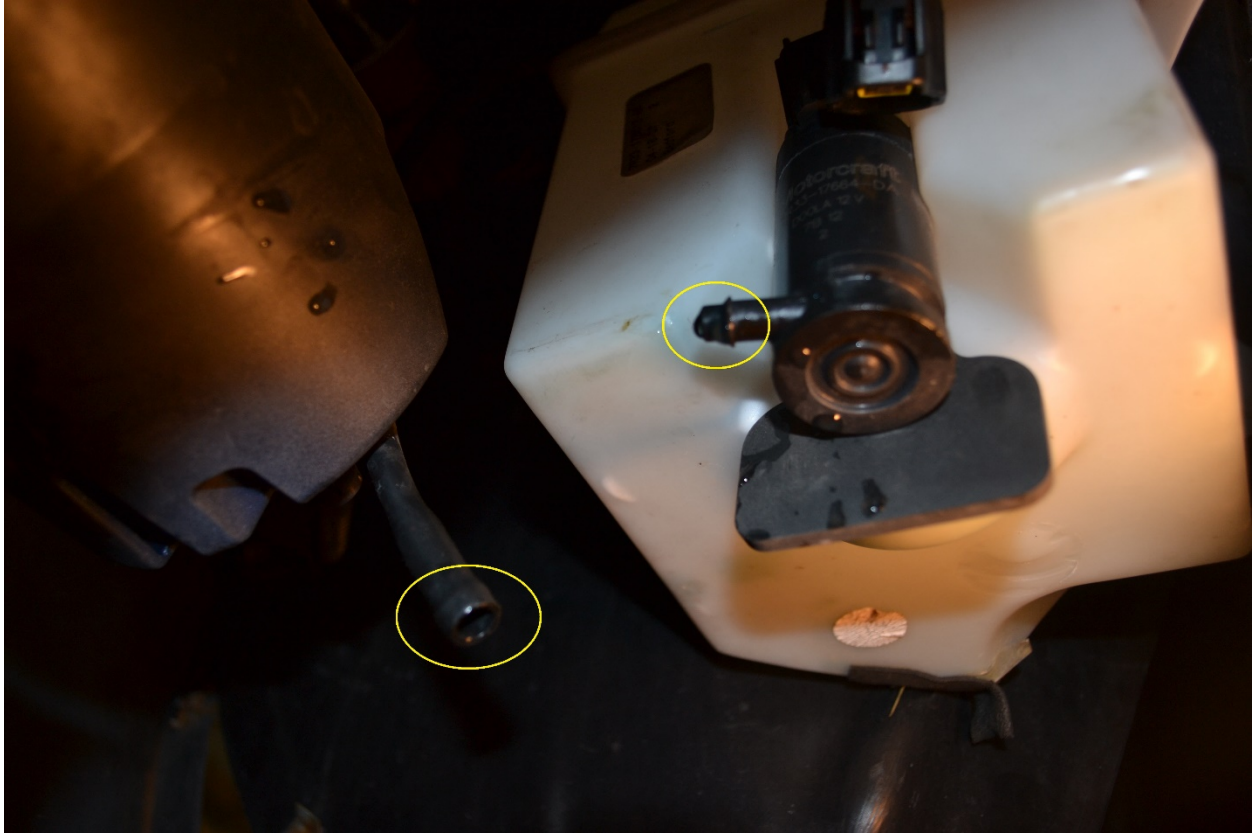
If equipped with Chin Spoiler, it would be easier to remove for clearance to replace reservoir

- a. Remove the screws and nuts holding the chin spoiler from the wheel well liner to the fascia on both sides. *May be Phillips screws or 7MM bolts*
- b. Remove screws and/or bolts holding chin spoiler to the bottom of the fascia and set chin spoiler aside

4. Disconnect the windshield washer pump electrical connector, there is a clip on the main plug that you would push in to disconnect

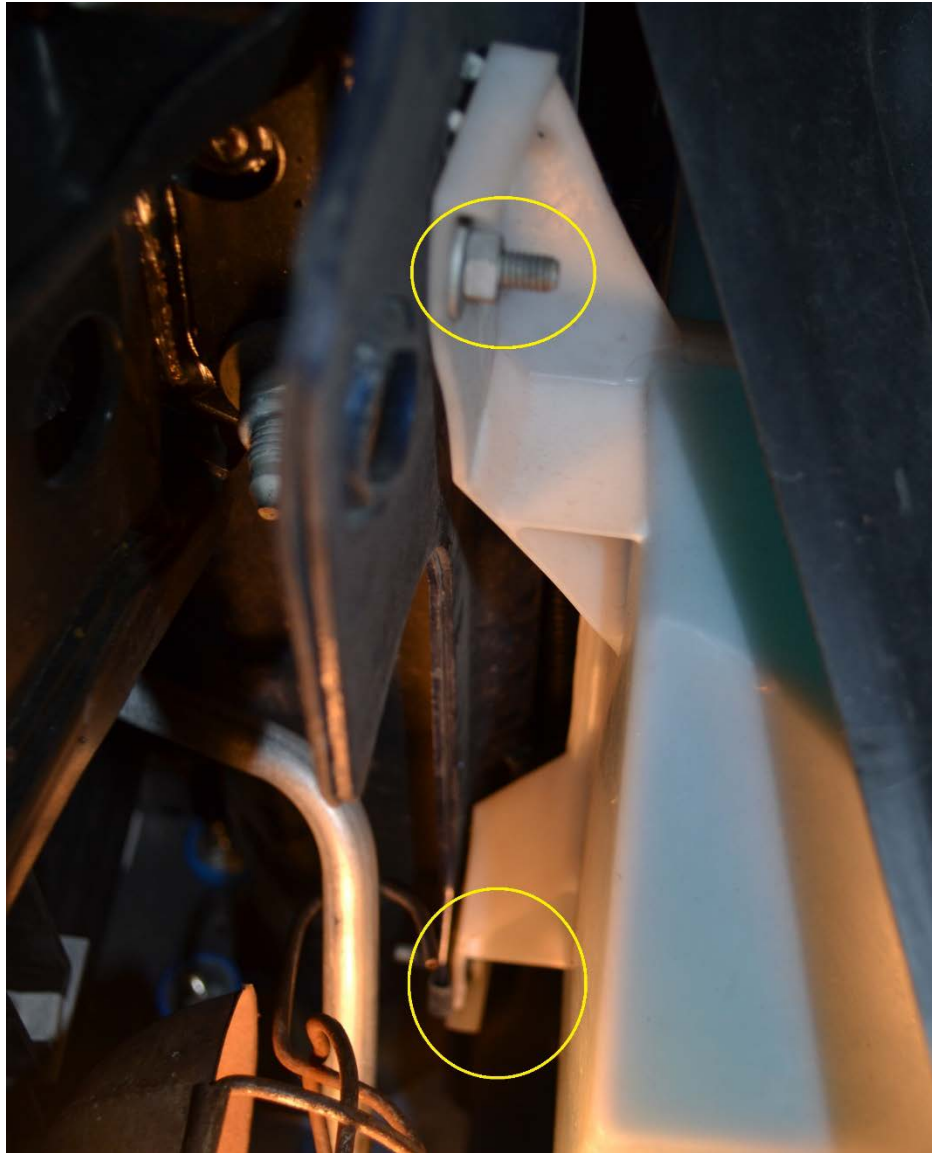


5. Disconnect Windshield Washer Pump Hose, should slide off, and drain the washer fluid in to a drain bucket



Be careful with washer solution, as it may contain methanol which is poisonous
* Safety Glasses is recommended while removing hose and draining fluid*

6. Remove the 3 Windshield Washer Fluid Reservoir bolts
 - a. 2 bolts (10mm) can be accessed underneath the car



b. 3rd bolt (10mm) is hard to get to, be best to pull back passenger side wheel well liner to access.



7. To install new reservoir, reverse the removal procedure
8. Fill Reservoir with new washer fluid.

Installation Instructions written by AmericanMuscle Customer Matthew Majka 1.05.2015