

TOOLS YOU WILL NEED

- 15mm Wrench
- 14mm Wrench

SHIFT KNOB INSTALLATION STEPS

- 1 Remove the factory shift knob by turning it counter-clockwise.
- 2 If you purchased a boot retainer, slide it over the shifter arm with the o-rings up.
- 3 Then, install the adapter lock nut by threading it onto the shifter arm. Make sure the flats are facing down. Reference step 2 image.
- 4 Install the threaded adapter by threading it onto the shifter arm. Align it with the top of the shifter arm. Due to varying shifter arm lengths, the threaded adapter might not be able to be aligned with the top of the shifter arm. Try to get the threaded adapter to have as much thread engagement with the shifter arm as possible. Reference step 3 image.

NOTE The threaded adapter drives the installed height and orientation of the shift knob.

- 5 Thread the adapter lock nut up and into the threaded adapter. Then tighten the components into each other using a 15mm wrench on the threaded adapter and a 14mm wrench on the adapter lock nut. Make sure the threaded adapter and adapter lock nut are tight.
- 6 Test fit the height and orientation of the shift knob by threading it onto the threaded adapter and do not overtighten. If you have a car with a reverse lock out or a shift knob with a gate pattern, follow the next steps. If not, finish the installation of the shift knob by tightening it.
- 7 If you purchased the boot retainer, slide it up and into the bottom of the shift knob and slide your boot over it. Some applications may require you to zip tie the underside of the shift knob boot to the retainer.

REVERSE LOCKOUT CARS

If you have a car with a reverse lockout, make sure the reverse lockout lever has enough travel by trying to put the car into reverse. If the shift knob is sitting too low, loosen the threaded adapter and adapter lock nut. Unscrew the threaded adapter so it sits higher on the shifter arm. Tighten the adapter lock nut into it and check again for reverse lockout travel.

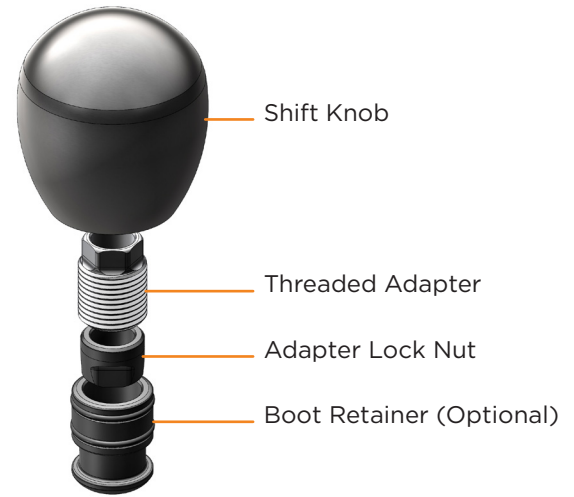
SHIFT KNOB ORIENTATION STEPS

The orientation of the shift knob is determined by the threaded adapter. As the shift knob is threaded onto the threaded adapter, it will bottom out in the shift knob.

Perform the following steps to adjust the shift knob orientation.

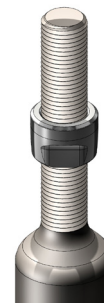
- 1 Take a visual picture of how many degrees the orientation is off and in which direction (clockwise or counter-clockwise) then remove the shift knob. Reference step 2 image.
- 2 Do not let the threaded adapter spin by holding a 15mm wrench on it. Then use a 14mm wrench to loosen the adapter lock nut by turning it clockwise.
- 3 Looking down at the top of the shifter arm, precisely turn the threaded adapter the same amount and direction the shift knob orientation was off by. Tighten the adapter lock nut into the threaded adapter and thread on the shift knob till it bottoms out.
- 4 Repeat this process until the correct shift knob orientation is achieved.

SHIFT KNOB COMPONENTS



SHIFT KNOB INSTALLATION IMAGES

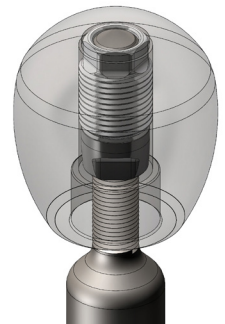
STEP 3



STEP 4



STEP 6



SHIFT KNOB ORIENTATION IMAGES

STEP 2

Note how the shift knob is about 20 degrees counter-clockwise off in orientation.

To correct this, the threaded adapter must be turned in the same direction and amount the shift knob orientation is off by.



NEED TECH HELP?

Email us tech@raceseng.com
Call our tech team 610.336.0206
RACESENG.COM

