

## **Installation Instructions for Hawk Performance Street/Race Brake Pads - Rear Pair (05-14 All)**

**Installation Time:** 3 hours

### **Tools Required:**

- ✓ OEM Brake Caliper Tool
- ✓ Breaker bar or impact gun
- ✓ 21 mm deep impact socket
- ✓ ½ in Ratchet
- ✓ 13 mm socket
- ✓ Jack and jack stands or lift
- ✓ Torque wrench
- ✓ Can of Brake Clean
- ✓ Wire brush

### **Parts Included**

- ✓ Brake pads
- ✓ Packet of gear head grease pak

### **Step 1:**

Jack up rear of vehicle and support on jack stands (If using a lift place arms on life point and slowly lift vehicle off the ground to half a foot off the ground in the air, then shake vehicle making sure it is sturdy. (If it rocks back and forth and makes noise lower vehicle and adjust arms and recheck) raise vehicle to best position for you to work.



### **Step 2:**

Using impact and 21 mm socket remove wheel.



### **Step 3:**

Using 13 mm socket remove caliper sliding bolts. (Circled in red) slide caliper pins back and forth feeling for any resistance, if a little resistance is present pins should be lubricated and if the pins have a lot of resistance present replaced with new ones and lubricated.



**Step 4:**

Support caliper on lower control arm or with a coat hanger suspending it.



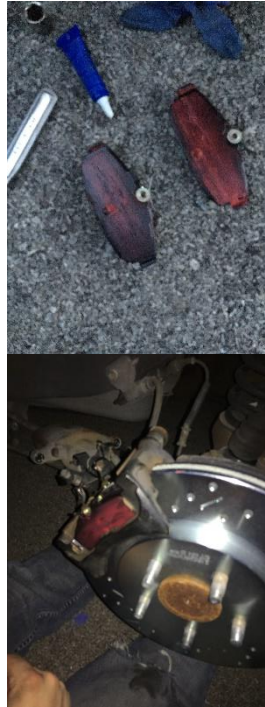
**Step 5:**

Remove old brake pads and the metal clips (Circled in red) with a wire brush and some brake clean, clean the metal clips.



**Step 6:**

Remove brake pads from package applying grease to the back of the brake pads and place pads on mounting bracket.



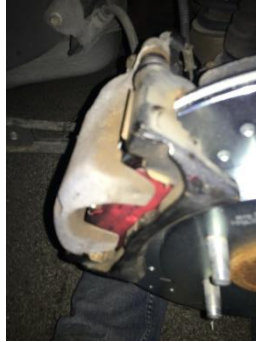
**Step 7:**

Using OEM Brake Caliper Tool slowly push back in the caliper piston. (Note: make sure the holes on the caliper pistone are straight up and down this is because there is a pin on the back of the brake pads that need to go in the hole.)



**Step 8:**

Slide caliper over mounting bracket and pads. Install bolts and torque them to 25 ft. lbs.

**Step 9:**

Reinstall wheel and tighten up lug nuts then lower vehicle to where wheels barely touch the ground and torque lug nuts to 100 ft. lbs. then lower vehicle all the way. Before starting the vehicle get in and depress the brake pedal anywhere from 5-10 times until the pedal firms, start vehicle and tests brakes before driving.

Installation Instructions Created and Submitted by AmericanMuscle Customer, Joseph Prunotto  
on 7/20/16