



10-14 Quarter Window Scoop

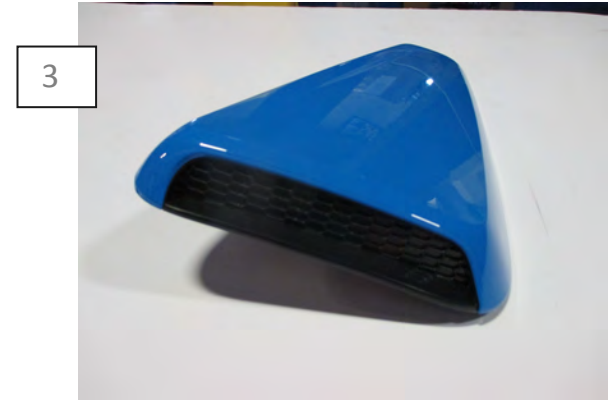
REQUIRED Alcohol Wipes 2 - Insert
 Adhesion Promoter 1 - Tape Kit



1
 Wipe the tape edges on the Scoop and window glass with provided alcohol wipes followed by adhesion promoter. **Note: A clean surface is essential for proper adhesion



2
 Apply the Supplied tape as seen above.



3
 Remove the tape backing from the insert and install the insert to the louver.



4
 Test fit the scoop and note how the scoop fits to the window. Then remove tape backing, apply the scoop to the window using firm even pressure.