

## Installation Instructions for Whiteline Adjustable Panhard Bar (05-14 All)



**Installation Time:** 1 hour

### **Tools Needed:**

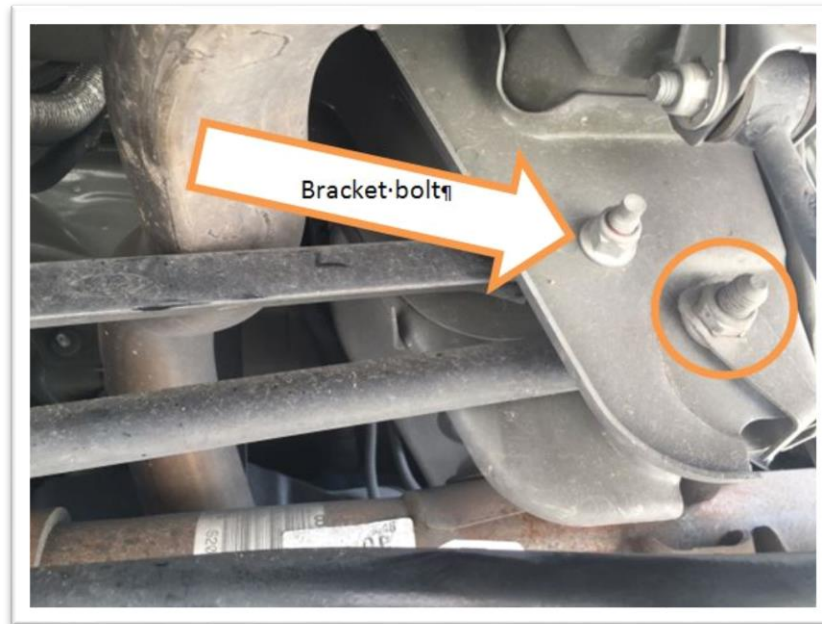
- ✓ Car Jack
- ✓ Jack Stands
- ✓ 18 mm Socket
- ✓ Socket Wrench (preferable ½")
- ✓ Torque Wrench
- ✓ Thread locker
- ✓ Chassis Lube
- ✓ Plumb bob
- ✓ Tape Measure
- ✓ Adjustable Wrench (0-2")
- ✓ Impact Gun (not needed but handy)
- ✓ Safety goggles and glove

### **Removal:**

1. On the driver side, locate mounting bolt and remove it by using an 18mm socket. Save bolt and nut to reuse. (*Note: removing tires will allow easier access.*)



2. On the passenger side, using the same 18mm socket, remove the bolt on the left bracket. Save bolt and nut to reuse. *(Note: loosen the panhard support bracket bolt may be necessary to remove the panhard bar.)*



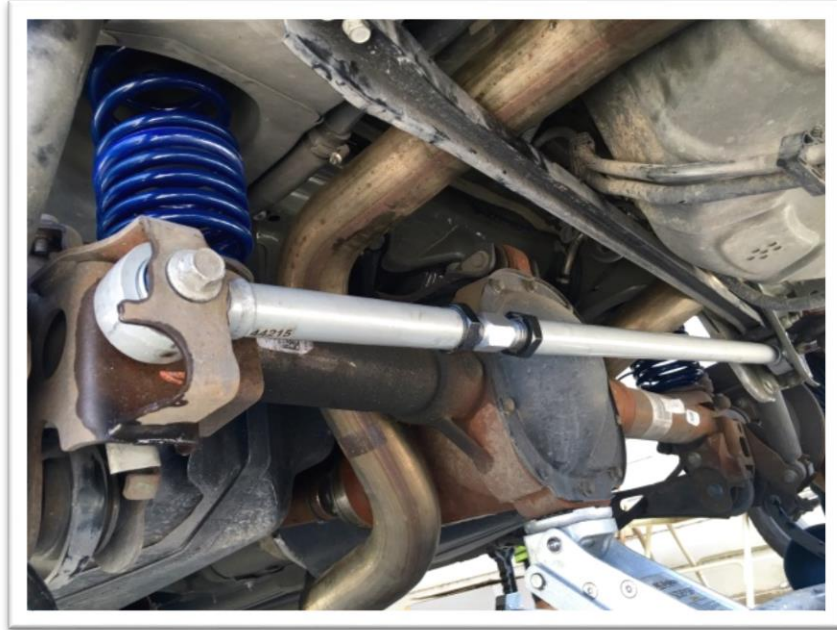
**Installation:**

3. Adjust the panhard bar length to approximately factory length using the bolts as a guide.



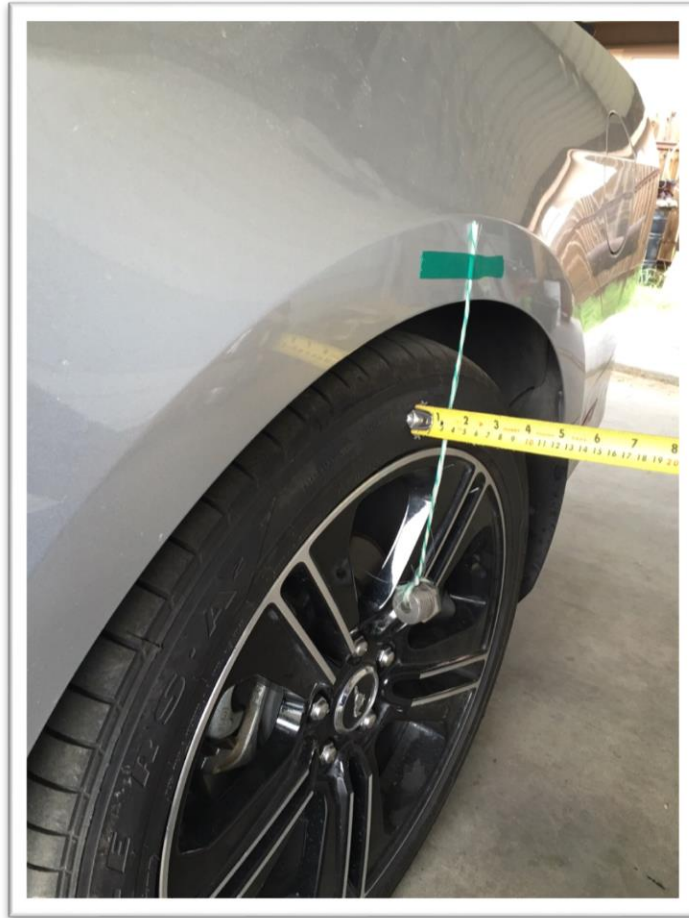
4. Hand tight lock nuts.
5. Place panhard bar into factory brackets.
6. Apply some lubricant (*I used WD-40*) to the brackets to make it easy to insert into the brackets. This bar doesn't have grease fittings so it doesn't have a specific side. For ease of adjustment I installed with the adjuster on the driver side.

7. Install bolts and nuts removed in steps 1 & 2.
8. Torque bolts to 129 ft./lb. using a torque wrench. Manual says car should be sitting at curb weight when tightening.
9. If panhard support bracket bolt was loosen, it is time to tighten the bolt.



**Adjustment:**

10. Safely remove vehicle from jack stands and lower vehicle to the ground.
11. Using a plumb bob, tape the string against the fender @ the center of the tire.
12. Measure the distance between string and the tire. Repeat for the other side.
13. Difference between two sides should not be greater than  $\frac{1}{4}$  in. adjust bar as needed with the adjustable wrench.



14. After finishing adjustment, apply thread locker to the adjuster thread and tight them down with the adjustable wrench.

Installation Instructions Written by AmericanMuscle customer, Leandro Torres 7/20/2016