

Contents:

- (1) - Driver Side Upper Bracket
- (1) - Passenger Side Upper Bracket
- (1) - Driver Side Lower Bracket
- (1) - Passenger Side Lower Bracket
- (2) - Gas Struts

Tools:

- 10mm, 13mm Sockets/wrenches
- Ratchet
- Small Flat Screw Driver



Re-install fender bolt through the lower strut mount bracket.



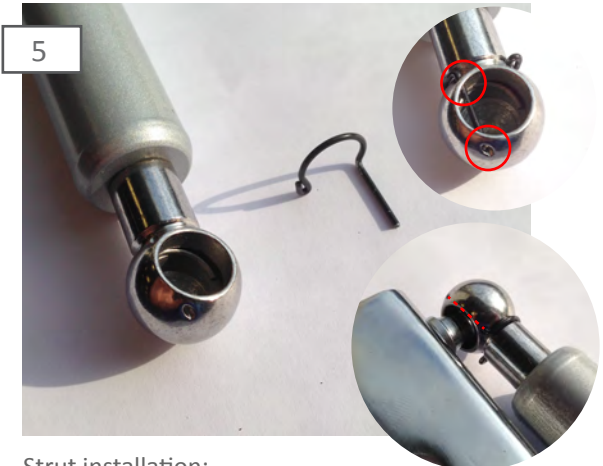
Install supplied gas strut onto mounting brackets.
****Note:** slowly close hood to make sure the hood clears the fender. Re-alignment of the hood may be required if the hinge shifted during install.



Remove the rear most 10mm fender bolt. Remove the forward most 13mm hood nut. Loosen the rear most hood bracket nut so that you can slide the upper mount bracket on.



Slide the bracket between the loosened hood nut, and the hood hinge. Then reinstall remaining hood nut. ****Note:** Passenger side bracket will require you to remove the windshield washer hose retaining clip.



Strut installation:
Remove the retaining clip. Place strut on the ball stud. Then reinstall the retaining clip. ****Note:** Make sure the retaining clip slides all the way through.

