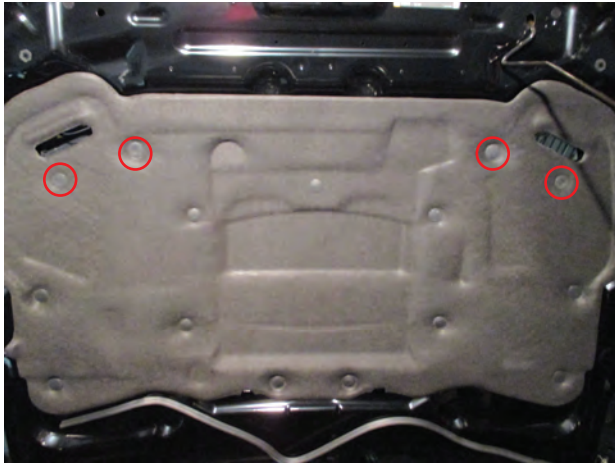


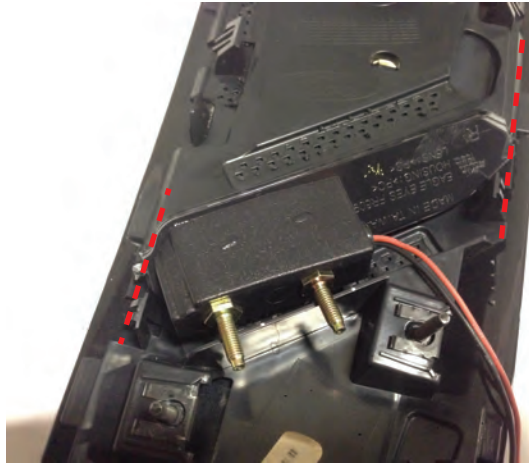
Included:
2 - Hood Vent Turn Signals
2 - Plug and play wiring harnesses
1 - Mounting hardware.

Tools Required:
1 - Socket Set
1 - Flat Screw Driver
1 - Cutting tool

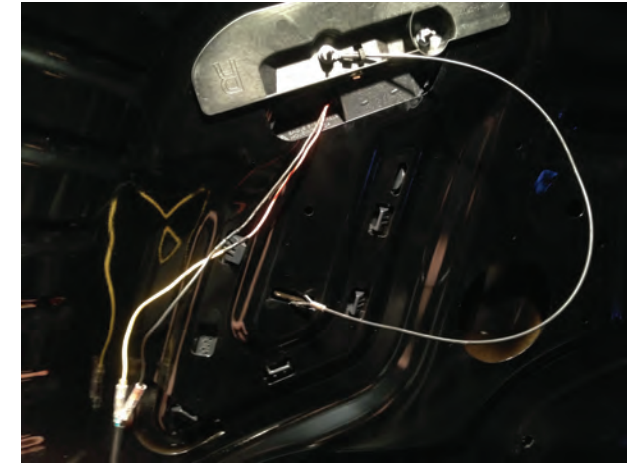
2015 Hood Vent Turn Signals



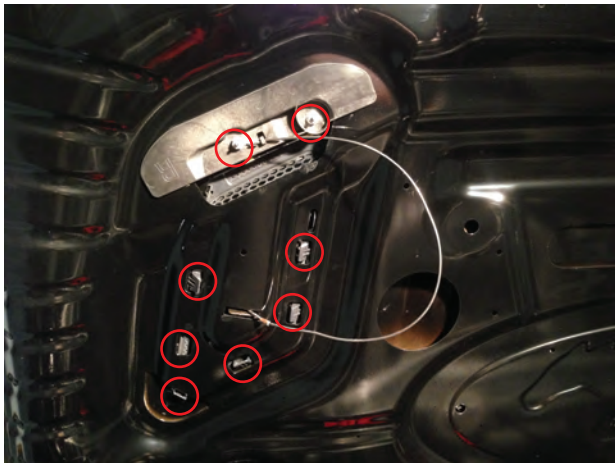
Step 1
Open the hood and remove the hood liner clips to that you can gain access to the hood vent nuts. Remove the nuts and sticker holding the vent tie down to the hood.



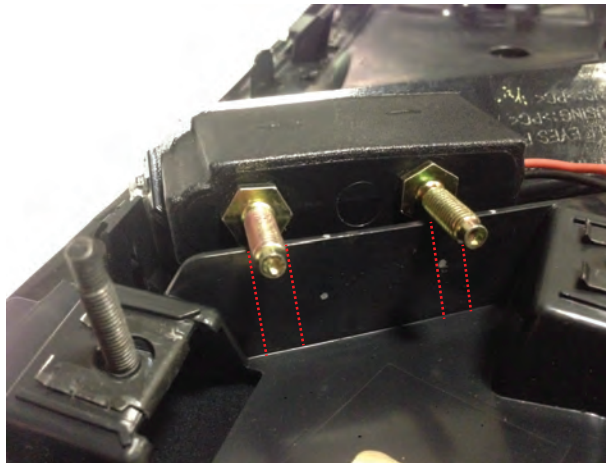
Step 3
Align the hood vent turn signal on the removed vent as seen above.



Step 5
Reinstall the hood vent carefully passing the turn signal wires through the opening so that they don't get pinched. Making sure to reinstall the vent cable and mounting nuts.



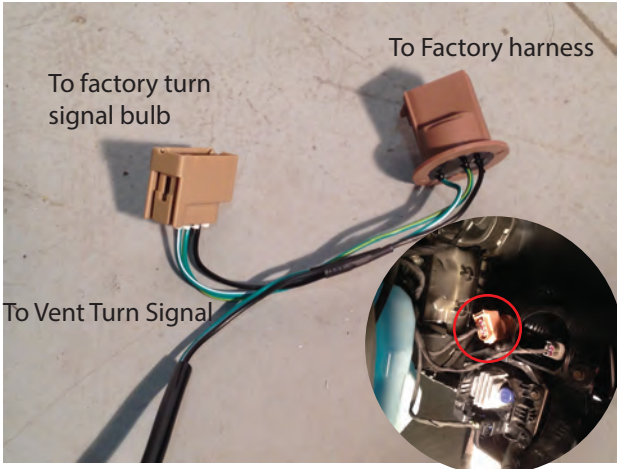
Step 2
Remove the vent from the hood, the vent is held in by plastic clips. Manipulate the clips in order to remove the vent from the hood.



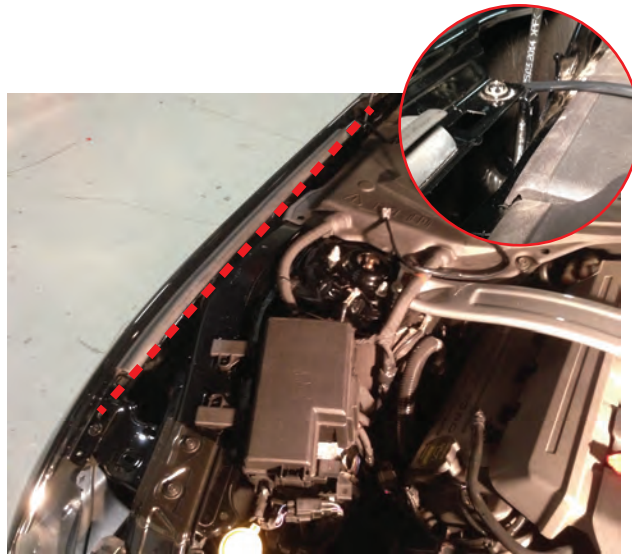
Step 4
Mark the vent where the studs will be mounted. Using a cutting tool, trim notches in the vent to allow the turn signal to mount over the entire vent surface. Using the provided nuts, secure the turn signal to the vent.



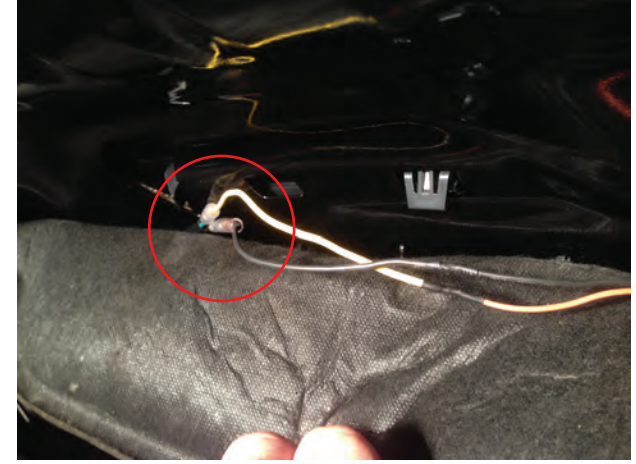
Step 6
Run the plug and play harness, first you will need to access the turn signal behind the bumper. Pull back the fender liner to gain access to the turn signal plug.



Step 7
 Plug the vent turn signal harness into the back of the turn signal and then into the turn signal harness.



Step 9
 Feed the harness behind the fender mounting tab and up the hood hinge.



Step 11
 Feed the Harness behind the hood liner and connect the harness to the hood vent mounted turn signal. Secure any extra loose harness with the provided zip ties.



Step 8
 Fish the vent harness up behind the headlight into the fender.



Step 10
 Zip tie the wiring harness to base of the hood hinge. Make sure the harness is out of the way of hinge when it closes.