

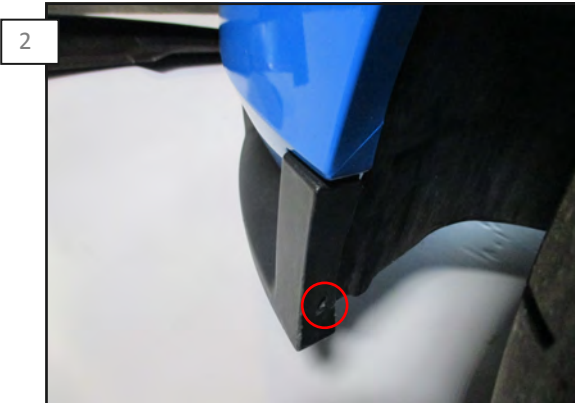
## 10-12 MMD Chin Spoiler

REQUIRED Alcohol Wipes  
Adhesion Promoter

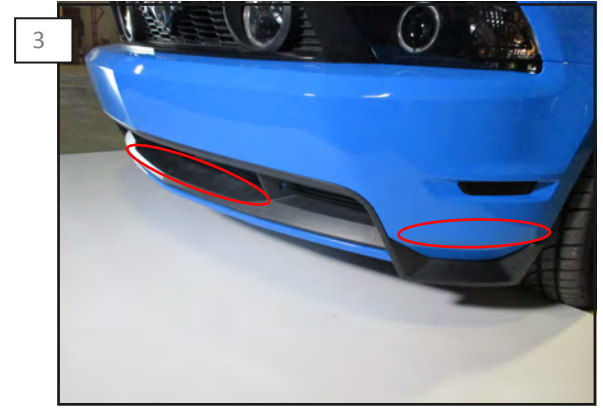
1/4" Metric Socket set  
Ratchet



Test fit the chin spoiler, start by inserting the center and then manipulate the either end to tuck around the back of the bumper.



Begin with removing the bottom most factory bolt on the bumper trim. Screws will be reused.



Prep any and all contact points using the supplied alcohol wipe. This is critical for a secure fit. Once clean, apply the provided adhesive promoter to the tape surfaces.



Remove the tape backing off the center of the chin spoiler. Peel the outer edges slightly as seen above. Once the Chin is fitted. Remove remaining tape backing and apply firm even pressure on all taped surfaces. Reinstall the factory screws.