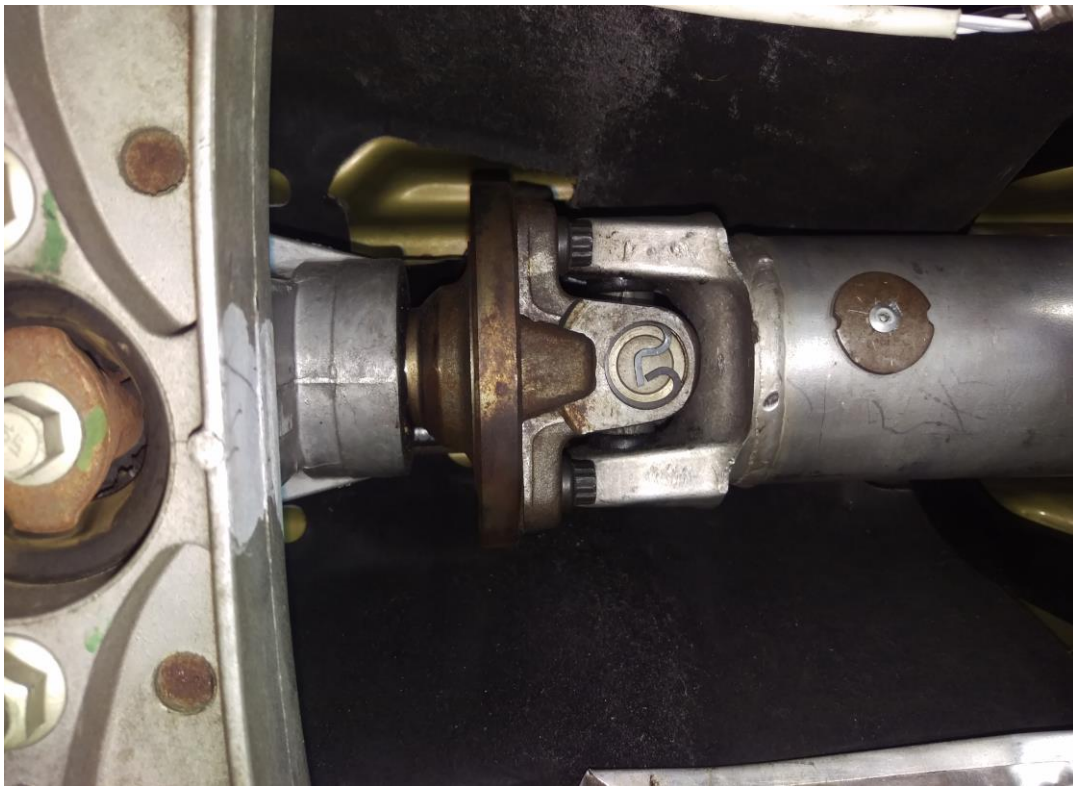


Blowfish Shifter Bracket Install Instructions
2007-14 GT500

REQUIRED TOOLS

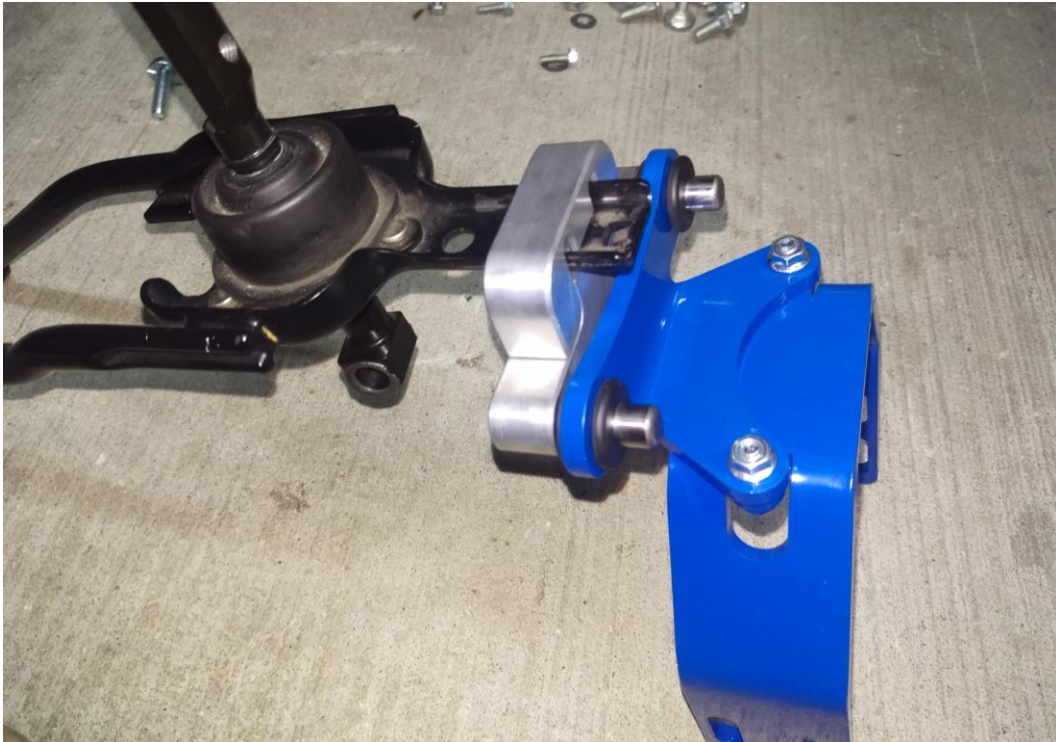
3/8" Ratchet
3/8" Sockets: 10mm deep, 13mm, 15mm, 18mm
3/8" 12" Extension
Torque wrench
Jack
Jack Stands
Wheel Chocks

Before:



1. Place the car on a lift or jack up the car and place it on jackstands. Ensure to chock wheels to prevent rolling.
2. Locate the rear shifter support bracket, underneath the car, above the driveshaft in the transmission tunnel and remove the factory bracket from the car with a 10mm deep socket and 12 inch extension then discard. If the car is equipped with an aftermarket shifter, the bracket needs to be removed as well, but keep the bracket, rotate it upside down and place it back onto the shifter (do not reattach to the car.)

3. For the factory shifter, attach the silver bracket halves together and loosely thread the M6 bolts to hold the halves in place. Slide the new bracket onto the factory shifter and tighten the bolts.

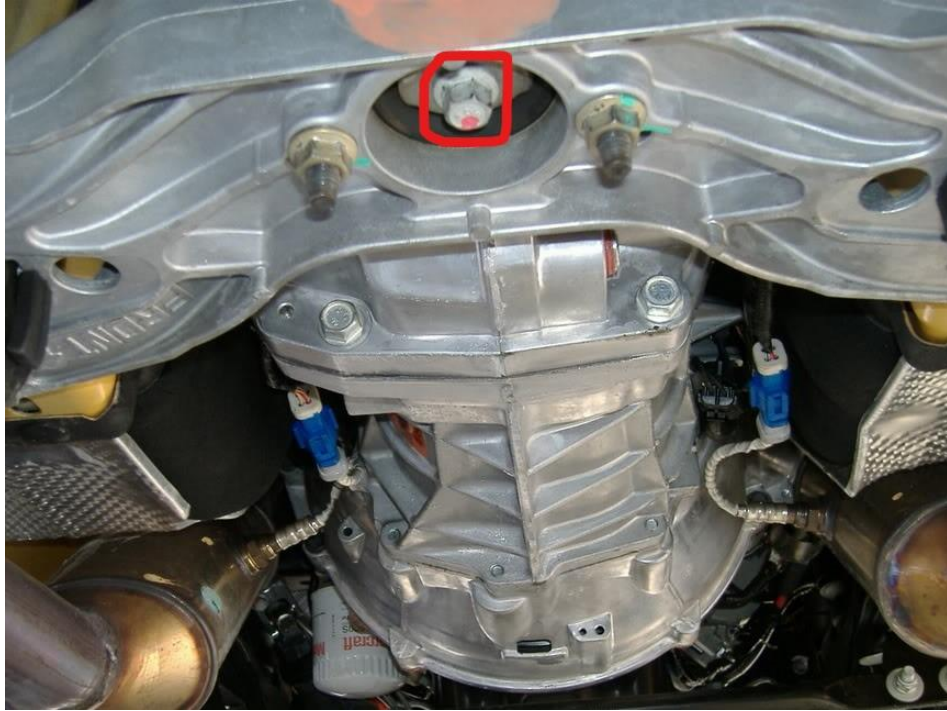


For aftermarket shifters, attach the bracket to the new appropriate adapter with provided bolts. Torque the bolts to 6ftlbs.



3. Install the upper half of the shifter bracket: Rotate the U shaped upper half of the shifter bracket up over the driveshaft. Attach the shifter mount to the U bracket using 2 x M6 bolts and torque to 6ftlbs.

4. Remove the centre transmission mount bolt (in red square, in photo below.)



5. Place a Jack under the transmission just in front of the transmission mount (red dot in photo below) and lightly apply pressure to the transmission, supporting it.



6. Remove the transmission cross member bolts (Circled red below) that hold the crossmember to the car.



7. Remove the crossmember and mount.
8. Remove the transmission rubber mount from the crossmember and discard.

9. Assemble the lower half of the Blowfish bracket using the provided isolator pucks and 2xM10 long carriage bolts as per the photos:





10. Using the M10x35 bolt, attach the bracket to the transmission and torque to 25ftlbs.

11. Lift the crossmember up into position and attach to the bracket with the two M10 nuts. Torque to 25 ftlbs.



12. Reattach the crossmember to the car with the 4 factory bolts (Circled red below) and torque to 85 ftlbs.



13. Attach the upper and lower bracket assemblies together using the 8xM10 carriage bolts and nuts. Leave them finger tight. Raise the upper half and shifter mechanism up until it hits the floorpan. Lower it 1/8" and torque the M10 nuts on the carriage bolts to 25ftlbs.

14. Lower car, remove wheel chocks and go for test drive.

Finished:

