



2015 Ford Mustang Turn Signal Hood Kit

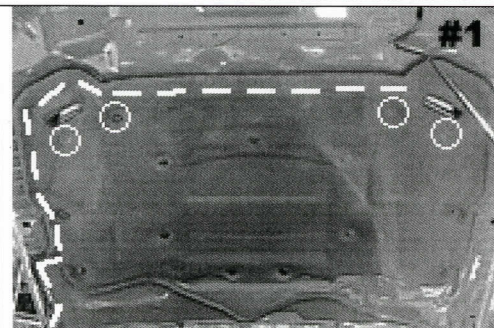
<u>Parts List:</u>	<u>Quantity:</u>	<u>Tool List:</u>
Bracket & pre-installed lamp	2	• Flat head screwdriver
Wiring harness	1	• Phillips screwdriver
PB-3660 Parts Bag	1	• Ratchet & Socket set
		• Pliers

Please familiarize yourself with the parts included as well as the instructions before attempting installation. Please seek the help of a certified technician if you feel unable to complete the installation safely and properly. Failure to read and follow the instructions below may result in personal injury or damage to property.

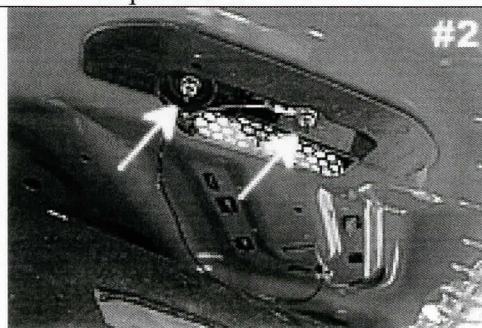
Mounting the Turn Signals:

Before beginning the steps below, turn off the vehicle, remove key, and engage the emergency brake. Our brackets are designed to mount to factory GT heat extractors and sit directly behind the mesh vent. They can also be installed into **Roush® heat extractors**. If you are installing these on a set of Roush heat extractors, please visit page 4 for separate installation information.

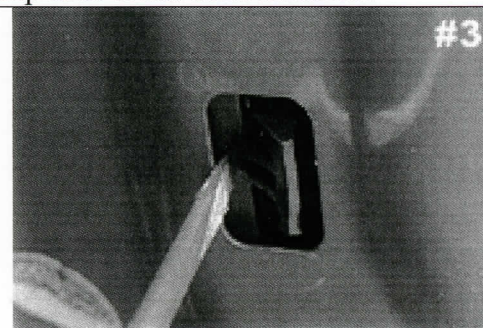
1. Open hood of car and make sure hood is held open securely.
2. Remove the 4 push pins holding the hood insulation pad in place circled in picture 1. The pins are ribbed so you'll have to pry them out with a flat head screwdriver.
3. Use a deep well socket to remove the 2 – 9mm nuts attached to each heat extractor. See picture 2.
4. Remove the black plastic retaining plate shown in picture 2. The plate is held on with double sided adhesive tape so you'll need to use some force to remove it.
5. Now carefully remove the heat extractor. Start at the end closest to the nose of the car and work your way back. Use a flat head screwdriver to release the clips holding the heat extractors in place. See picture 3.
6. Repeat the process to remove the other heat extractor.
7. Locate the correct lamp for the side you plan to work on first. The lamps come pre-installed on the brackets so that all you have to do is attach the bracket to the heat extractor. Hold the lamp/ bracket in place while looking at it from the topside of the heat extractor so you have an idea of how it will need to be oriented. See picture 4/5 for a view of the lamp after it has been installed.



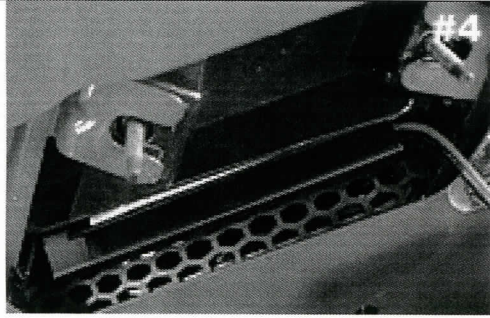
Remove 4 circled pins. Route wiring along dashed line.



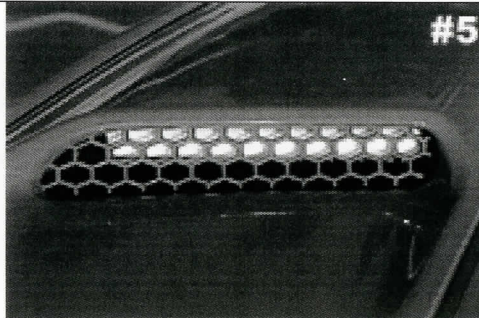
Remove the 2 – 9mm nuts and black retaining plate that secure extractor.



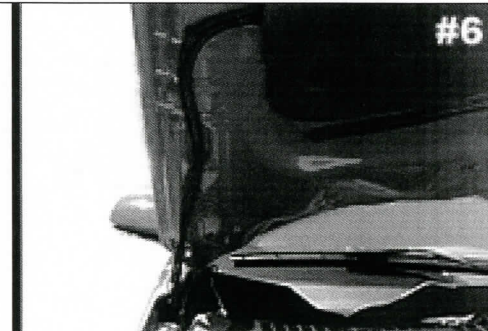
Use a flat head screwdriver to carefully un-clip heat extractors.



Shown is how the lamp/ bracket will look installed on the heat extractor.



Shown is another view of the lamp after it has been installed.



Use zip ties to secure wiring at hood base – follow washer fluid hose.

At this point you want to have a very good idea of where the lamp needs to be placed. In the following steps we will prep the surface and apply an adhesion promotor to ensure a strong bond. Once the bracket is attached, it will be difficult to move so you want to be sure of the placement.

8. Put on a set of protective gloves.

9. Use the included alcohol prep pad to wipe the surface down where the bracket will be attached. 3M™ Adhesion Promoter 06396 is supplied in an easy-to-use sponge applicator packet. Hold packet upright and avoid squeezing an opened packet to prevent spillage of liquid contents. The packet can be opened by tearing across the top of the packet at the notches. This will expose the sponge applicator. Do not remove the sponge or squeeze a freshly opened packet. Handling the bottom section of the packet should enable application of adhesion promotor with no mess.

10. Apply a thin, uniform coating to the general area on the underside of the heat extractor where the VHB tape will be applied. Wait 30-90 seconds for the coating to dry completely.

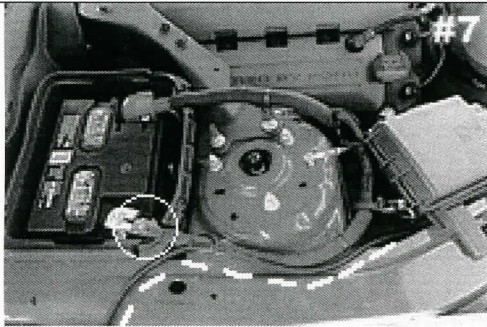
11. Peel off the tape backing and carefully place the first bracket onto the heat extractor. Be sure to press down firmly on the back of the bracket to make sure it adheres properly. REMEMBER – once you place the bracket, it cannot be easily removed.

12. Repeat the process on the other side.

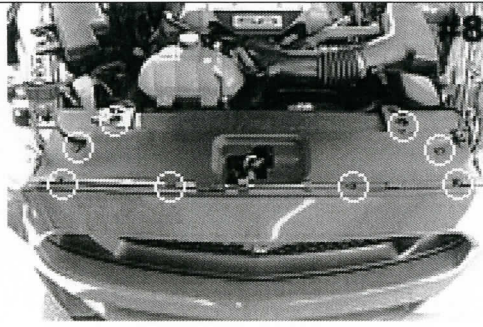
Connecting the Wiring:

Familiarize yourself with the wiring harness included with the kit. Locate the two gray connectors that plug into each turn signal lamp.

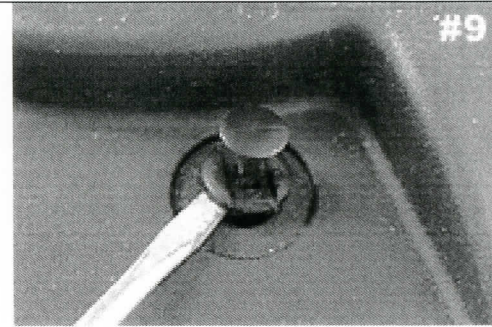
1. Plug the gray connectors into the corresponding turn signal lamps.
2. Route the wiring under the hood insulation down toward the passenger side. See the dashed line in picture 1 that shows the path you should follow when routing your wiring.
3. Secure the wiring at the base of the hood with supplied zip ties. Be sure to leave just enough slack to allow the hood to open and close properly, but not so much that it will get smashed from the hoods hinges. Follow the washer fluid hose. Do not zip tie to the hinge! See picture 6.
4. Remove the battery cover on the passenger side. It is held on by 3 caps that you can unscrew by hand. Lift cover off and save for re-attachment later.
5. Use a 10mm socket to attach the **black** ground wire to the ground cable connected to the battery. See picture 7. Re-attach the bolt making sure it is tight so the ring terminal makes proper contact.
6. Route the wiring down the passenger side fender towards the headlight. Run the wiring under the battery cover and follow existing factory wiring. See dashed line on picture 7.
7. Remove the black panel which covers the radiator shown in picture 8. The panel is attached by 8 plastic pins. The pins are removed by prying up on center part and then prying up on the body of the pin. See picture 9. Save pins and black panel for re-installation later.



Attach ring terminal to bolt circled above. Re-tighten the bolt.



Remove black panel shown. Save 8 retaining pins for re-install later.

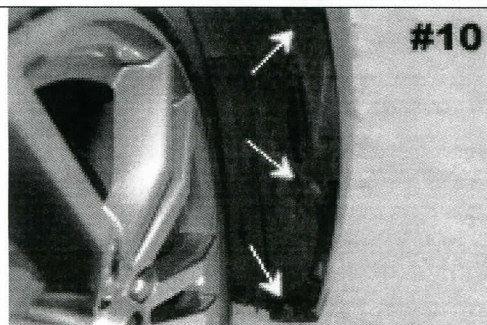


Pry up on center part of pin first. Then pry out entire retainer pin.

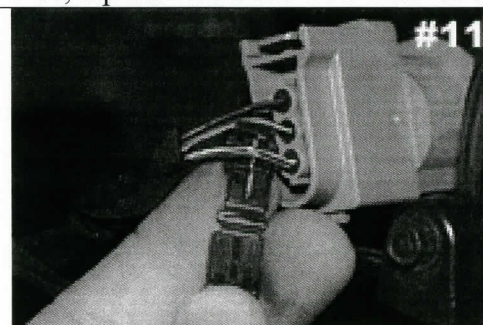
8. Route the wiring for the driver side turn signal over the radiator along the frame of the car. The best way to do this is follow the existing bundle of wiring.
9. Route the red wire for each turn signal down to the fog light/ turn signal locations. These wires will connect to the turn signal indicator on the driver and passenger side.

At this point it is time to make the final connections. Using a vehicle hoist or ramps is not necessary, although it will make the installation easier. This can be done on the ground, with no special tools.

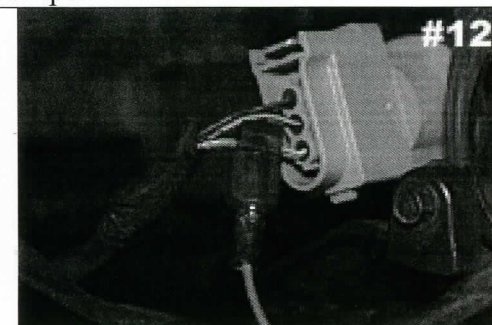
10. Begin on the passenger side. Turn the steering wheel all the way to the left so that you expose the wheel well directly behind the fog light.
11. Remove 5 push pins in the wheel well so that you can pull the plastic back far enough to access the wiring. There are 3 push pins around the lip of the wheel well (see picture 10), and 2 larger push pins that can be seen from the ground (not pictured). Use a flat head screwdriver to remove.
12. Pull back the wheel well liner so that you can see the wiring. Locate the 3-wire brown connector and unplug it.
13. Felt electrical tape is wrapped around the bundle of wires that plug into the brown connector. Carefully un-wrap the tape several inches so you have better access to individual wires.
14. Using one of the supplied red wire taps, slide the **Yellow** wire with **Purple** stripe onto the wire tap. It is the wire on the bottom. See picture 11 below. The wire should sit in the middle of the two teeth. Squeeze down on the wire tap making sure it snaps closed. Do not cut Wire!
15. Plug the **red** wire from the wiring harness into the back of the wire tap. See picture 12.
16. Plug the brown connector back into its socket.
17. Use your key FOB to unlock the doors and test the passenger side turn signal. If it is working, repeat the process to wire the driver side turn signal. If it does not work, you have most likely not tapped into the proper wire and need to check your connections.
18. Please note: On the driver side, tap into the **Blue** wire with **Green** stripe.



Shown are 3 of the 5 push pins you must remove in the wheel well.



Slide wire into place and close wire tap.



Plug red wire into the wire tap as shown.

Final Installation:

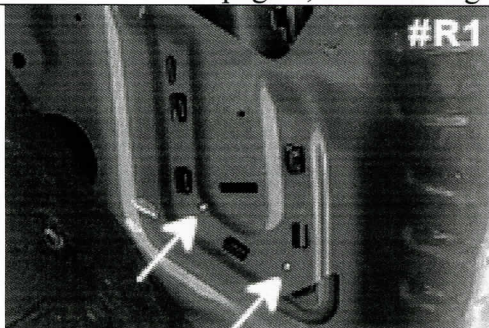
1. Double check everything to make sure it was connected properly. Test the lights with your Key FOB again to make sure they come on and off properly. You may also use your emergency flashers to activate them. If the lights do not come on, visit the trouble shooting guide below.
2. Use the supplied zip ties to secure all wiring.
3. Make sure that all of the push pins in each wheel well were replaced.
4. Reinstall battery cover.
5. Re-install the radiator cover and make sure all push-pins are re-installed. Failure to do so can cause the check engine light to illuminate on your dash.
6. Enjoy your new hood mounted turn signals! The lights will activate automatically when you operate your turn signals, hazard lights and lock or unlock your Mustang!

Roush® Heat Extractor Lamp Installation

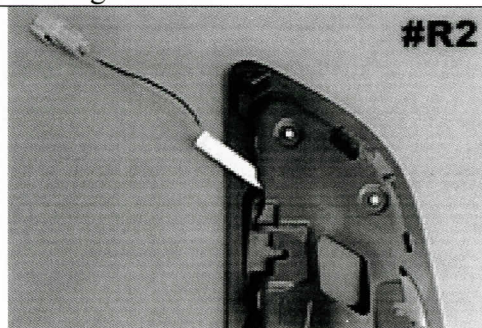
Mounting the Turn Signals into Roush Heat Extractors:

If you are installing these on a set of Roush heat extractors, follow the steps below to install the turn signal lamps into the heat extractors.

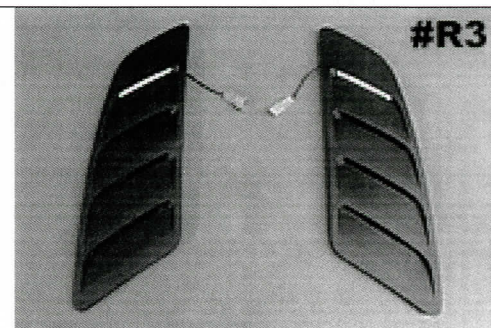
1. Open hood of car and make sure hood is held open securely.
2. Remove the 4 push pins holding the hood insulation pad in place circled in picture 1 above. The pins are ribbed so you'll have to pry them out with a flat head screwdriver.
3. Use a deep well socket to remove the 2 – 9mm nuts attached to each heat extractor. See picture 2.
4. Remove the black plastic retaining plate shown in picture 2.
5. Remove the 2 - T10 Torx screws that help secure each heat extractor. See picture R1 below.
6. Now carefully remove the heat extractor. Use a flat head screwdriver to release the clips holding the heat extractors in place. See picture 3.
7. Lay the Roush heat extractors face down on a soft, flat surface.
8. At this point, we need to remove the turn signal lamps from the brackets they come pre-installed in. The brackets that the turn signal kit comes with will not be needed when installing into Roush heat extractors. The LED lamps themselves sit inside a black C channel that they simply slide out of. Be sure NOT to pull on the wires to remove the LED lamps. Simply push on the end without wires until the lamp is free from the C channel.
9. The LED lamp will be inserted into the forwardmost slot in the heat extractor. The rounded side of the LED lamp should be the part that is visible in the slot once installed. Make sure that you start on the inside of the heat extractor. Gently and carefully slide the LED lamp into the slot until it reaches the end. See picture R2 below to see what the lamp looks like when it is partially installed. Picture R3 shows the lamps once installed.
10. Once finished, reverse the removal procedure to re-install the Roush heat extractors. Then proceed to page 2, 'Connecting the Wiring' section.



Remove the 2 – T10 Torx screws that help secure each heat extractor.



Shown is the LED lamp partially installed in the front slot of extractor.



Shown are the lamps once installed. Connectors should be on the inside.

Trouble shooting guide:

Lamp(s) won't turn on –

- Check to make sure you connected **red** wire tap(s) to the correct factory wire outlined in the 'Connecting the wiring' section above. This is the MOST common mistake made during installation.
- Check the ground cable you connected under the 'Connecting the wiring' section. Make sure that it is making proper metal-to-metal contact and that the bolt is tightened.
- Make sure you have plugged your factory turn signal connectors back into each bulb. These are the brown 3-wire connectors you unplugged in the 'Connecting the wiring' section above. Then, Try keying OFF and then ON to reset all vehicle lighting. Test lights to see if they are functioning.

One or both turn signals flash rapidly –

- Check the connectors that plug into the back of the turn signal bulbs to make sure they were re-connected properly. If the connections are loose, rapidly flashing turn signals will occur.

If you are still having trouble with your product, please contact us for technical assistance.