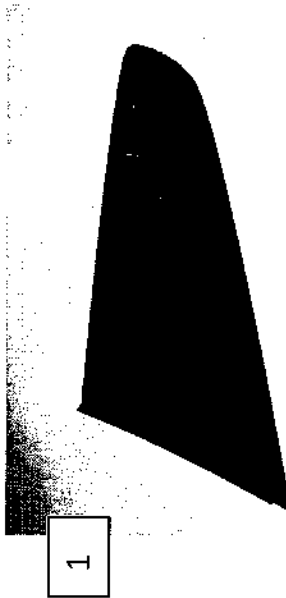


15-16 Quarter Window Louver

REQUIRED Alcohol Wipes
Adhesion Promoter

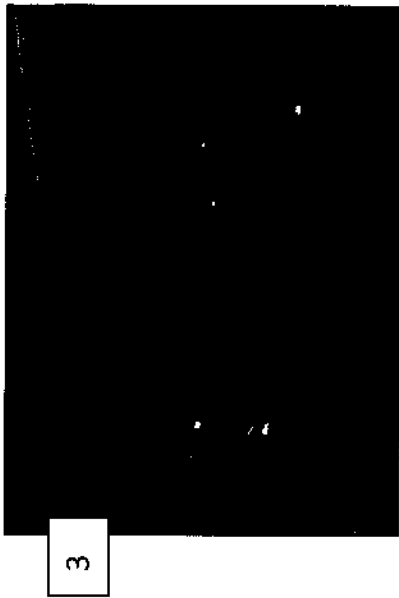
Tape Kit



Wipe the tape ledges on the Scoop and window glass with provided alcohol wipes followed by adhesion promoter. **Note: A clean surface is essential for proper adhesion



Apply the supplied tape as seen above.



Test fit the louver and note how the louver fits to the window. Then remove tape backing, apply the louver to the window using firm even pressure.