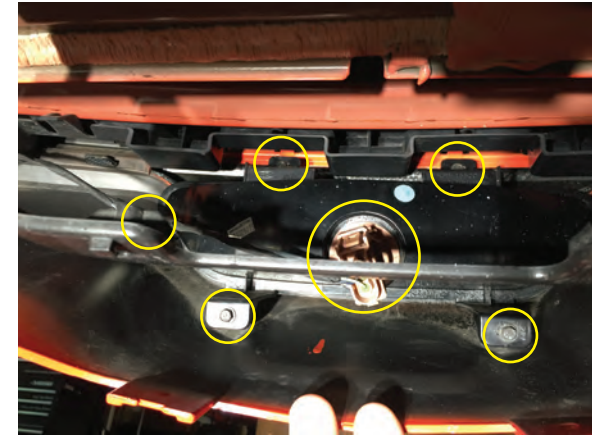
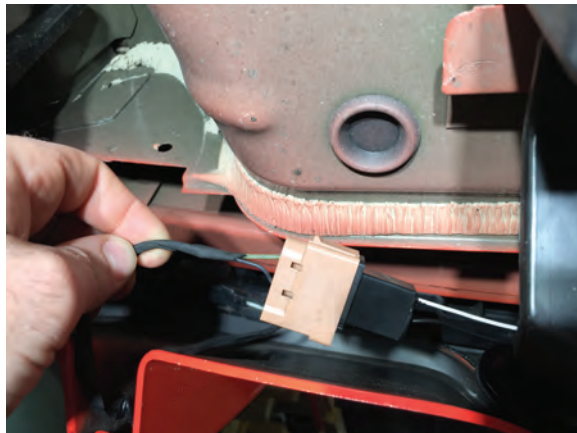


Step 1
Begin by removing the (2) screws and (2) clips securing the lower bumper valence.



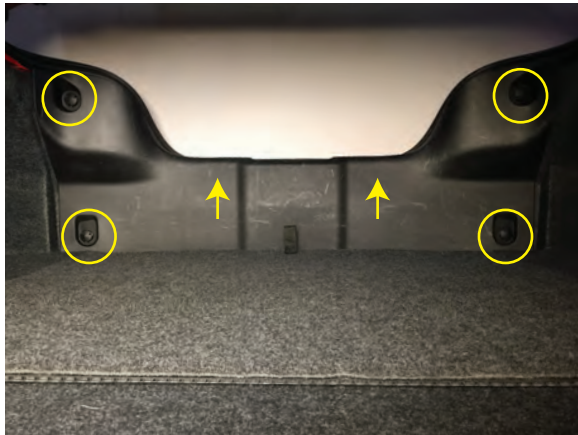
Step 2
Pull the valence down to gain access to the (4) factory reverse light screws (7mm). Un-clip the plug on the factory light and remove the harness from the housing.



Step 3
Install the Raxiom reverse light the same way the stock light came out. Reuse the (4) factory screws. Plug the wiring harnesses together and secure out of the way.

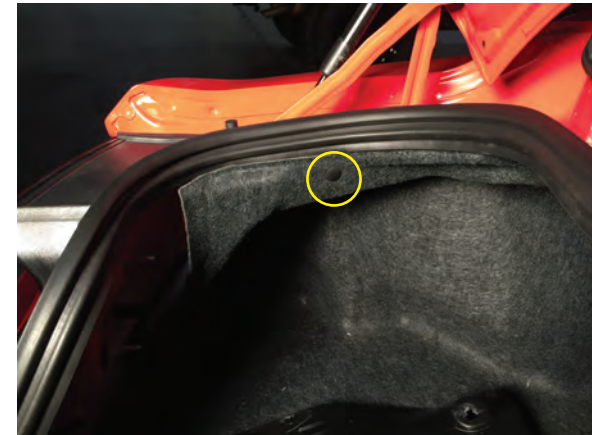


Step 4
Locate the body grommet on the bottom of the trunk. Carefully pierce only the body grommet so that you can feed the black and green wires from the reverse light into the trunk.



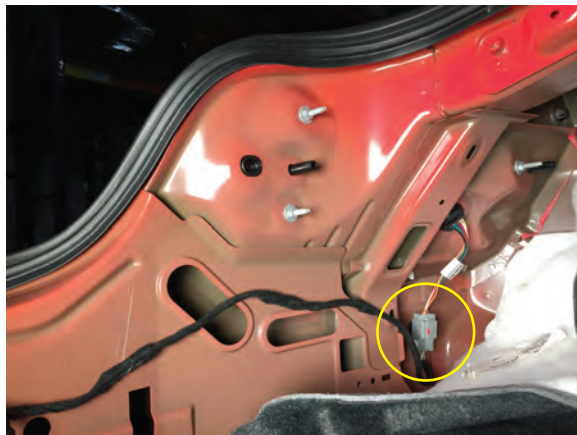
Step 5

Remove the (4) twist on fasteners holding the trunk panel in place. Then apply slight upward pressure to remove the panel from trunk.



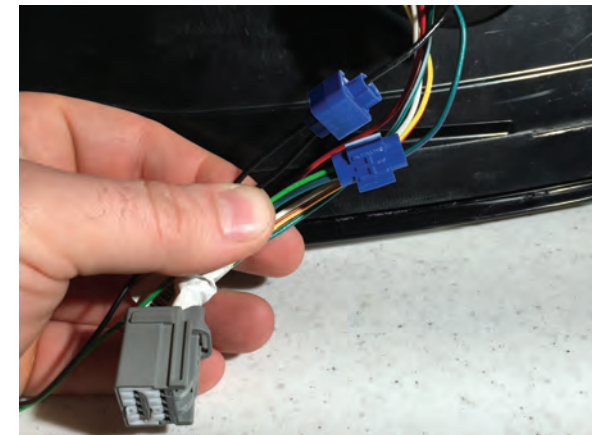
Step 6

Using a panel removal tool or pliers, remove the plastic clip holding the trunk liner in place.



Step 7

Fold back the trunk liner and locate the driver side tail light harness. Unclip the harness for easier access to the wiring harness.



Step 8

Using the supplied wire splice, tap the following:

Tail light harness Black wire to Raxiom Black wire.

Tail light harness Green with a Purple stripe to the Raxiom Green wire.