

## Installation Instructions for BMR Boxed Subframe Connectors - Red (05-14 All)

**Installation Time:** 3 Hours

**Required Tools:**

- ✓ 3/8" dr ratchet wrench
- ✓ 3/8" dr metric sockets
- ✓ 4 x 2 ton jack stands
- ✓ Floor jack
- ✓ Magic marker
- ✓ Tin snips
- ✓ 4" grinder
- ✓ Flux-core/MIG welding machine
- ✓ Weld-thru primer (optional)
- ✓ Rust resistant paint (red)

1. Lift vehicle all four wheels off the ground. The vehicle must be supported with the suspension loaded - for the front wheels, jack up the front of the car and place jack stands under the lower control arms. Jack the rear of the car and place the rear axle on jack stands.

2. Using a 10mm socket, remove both rear parking brake cable brackets.



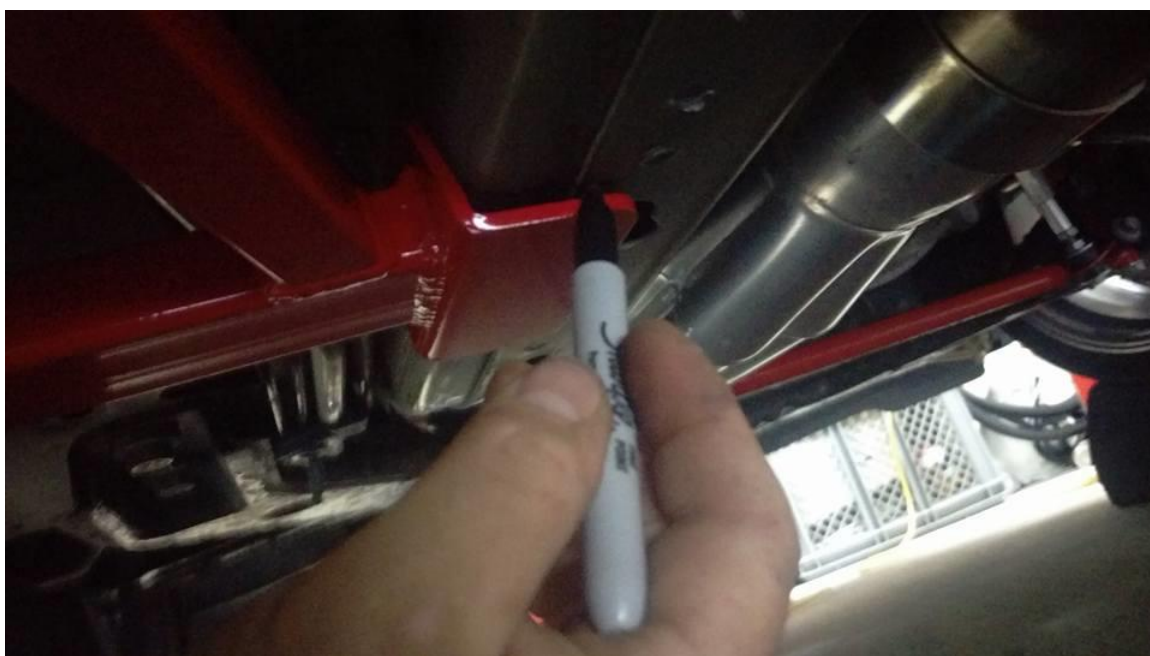
3. Using the same socket, remove the plastic fuel line cover on the driver's side.



4. Using a 13mm socket, remove both wind deflectors (left and right sides).
5. For both sides, lift the sub frame connectors into place with a jack and support against the floor and subframes.



6. Using a marker, trace all weld surfaces then remove sub frame connectors.



7. Grind all weld areas at the marker lines. Also remove the powdercoat on all weld points on the subframe connector. You can use a high zinc weld-thru primer to promote adhesion and avoid corrosion on all grind areas (optional).

8. Replace the sub frame connector into place with a floor jack. Verify that all mounting surfaces of the subframe connector are flush with the subframe and support it in place. Tack weld all mounting points before any full weld beads are performed. Once all mounting points have been tack welded into place, remove the floor jack and weld every connection possible.





**For the driver's side:**

9. Before welding, cover the plastic fuel lines near the front of the sub frame connector with a damp rag. Proceed with the weld procedure listed in step 8.

11. Prep and paint all welded surfaces with a rust preventative paint.

12. You must cut the plastic fuel line cover in order to reinstall it. This can be done with tin snips. Cut out and discard the center section of the cover. Reinstall the two outer sections of the cover.

13. Install the rear parking brake cable brackets over the studs located on the rear of the sub frame connectors and tighten with a 10 mm socket.

14. Lower the vehicle and enjoy!

Installation Guide Created and Submitted by AmericanMuscle Customer, Paul Dube, on 9/18/2016