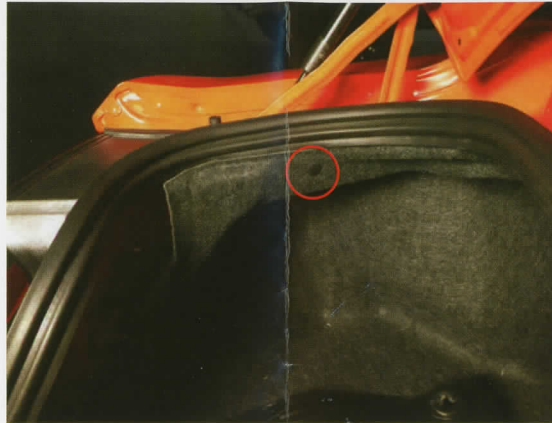


Step 1

Remove the (4) twist on fasteners holding the trunk panel in place. Then apply slight upward pressure to remove the panel from trunk.



Step 2

Using a panel removal tool or pliers, remove the plastic clip holding the trunk liner in place.



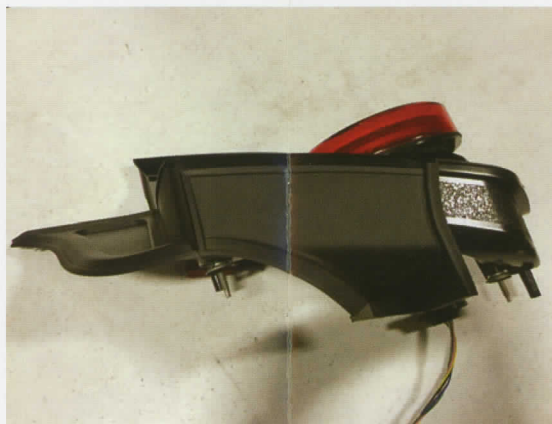
Step 3

Remove the (3) bolts securing the tail light to the vehicle. Unclip the electrical connection remove the tail light from the vehicle.



Step 4

Remove the upper plastic trim panel from the factory tail light. Use a plastic trim removal tool and gently pry upward.



Step 5

Transfer the trim panel to the replacement tail light.



Step 6

Install the tail light in the reverse order.