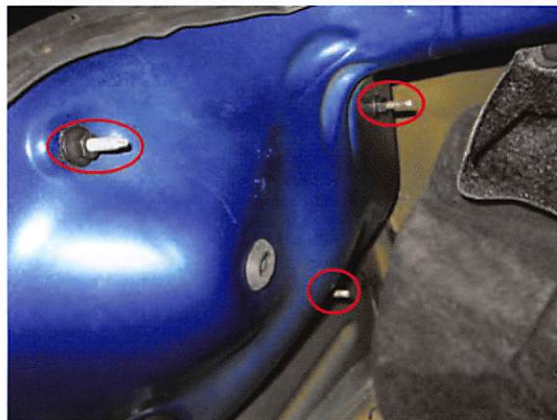


2005-2009 Vector Tail Light



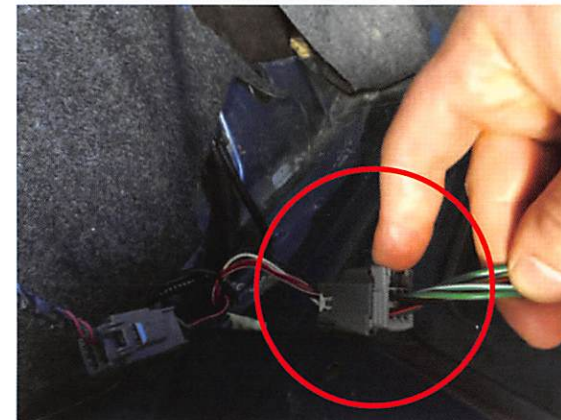
Step 1

Using a panel removal tool or pliers, remove the (2) lower clips on the trunk trim panel. Then unscrew the upper fasteners.



Step 2

Remove the (3) tail lights bolts.



Step 3

Unclip the factory tail light harness.



Step 4

Remove the tail light from the vehicle.



Step 5

Transfer the factory reverse bulb into the new tail light.



Step 6

Install the new tail light in reverse order.

Trouble Shooting:
If using LED reverse light, always check the polarity. If needed, flip the bulb in the socket 180°. Cycling the key on and off may also be required.