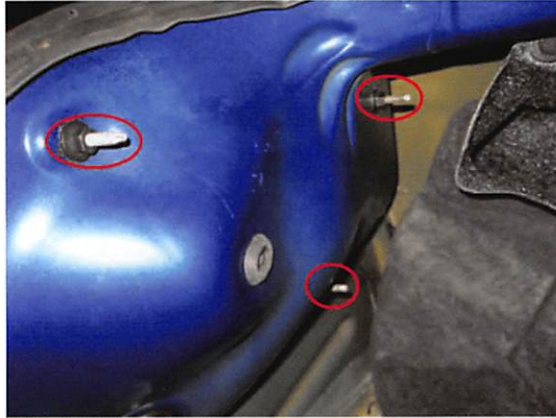
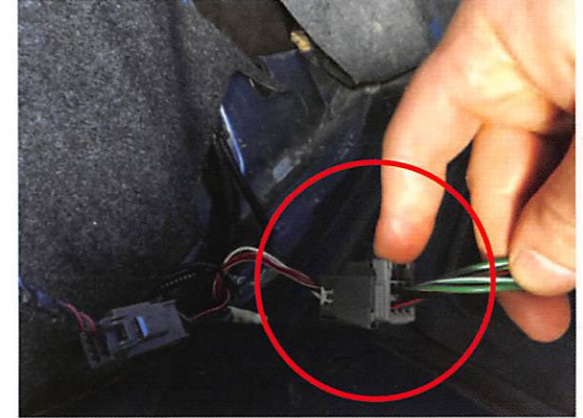




Step 1
Using a panel removal tool or pliers, remove the (2) lower clips on the trunk trim panel. Then unscrew the upper fasteners.



Step 2
Remove the (3) tail lights bolts.



Step 3
Unclip the factory tail light harness.



Step 4
Remove the tail light from the vehicle.



Step 5
Transfer the factory reverse bulb into the new tail light.



Step 6
Install the new tail light in reverse order.

Trouble Shooting:
If using LED reverse light, always check the polarity. If needed, flip the bulb in the socket 180°. Cycling the key on and off may also be required.