

15-16 Tail Light Trim

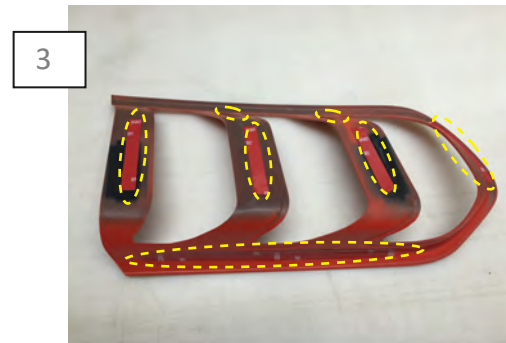
REQUIRED *Razor knife*



1
Begin by cleaning the tail light of dirt and debris using soap and water. Once thoroughly dry, wipe highlighted locations down with the supplied alcohol wipes.



2
Apply the supplied tape to the indented portions of the trim panel.



3
Pictured is the trim panel ready for installation.



4
Test fit the trim panel on the tail light prior to removing the tape backing.



5
Remove the tape backing. Position the trim, and apply firm pressure to ensure proper adhesion.