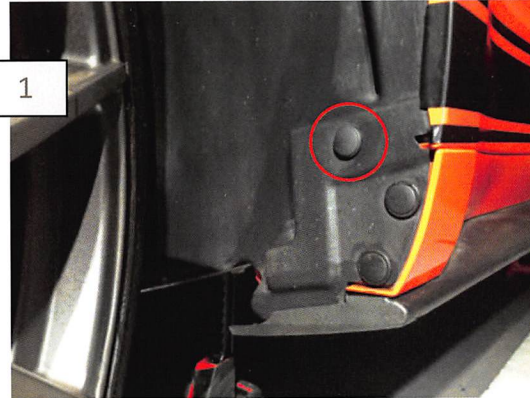


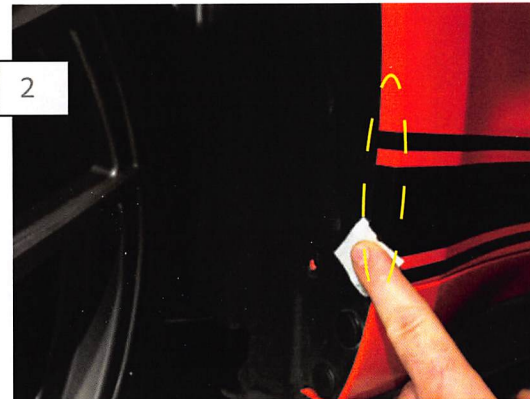
15-17 Splash Guards

REQUIRED Flat Screw Driver Jack and Jack Stands
 Drill and Bits

Front Splash Guards



1 Raise and support the front of the vehicle. Turn wheel for better accessibility to the mounting locations. Begin by removing the factory push pin circled above.



2 Using the supplied alcohol wipe clean the mounting location allow time for the surface to dry. Then apply the supplied adhesion promoter and allow it to haze.



3 Peel off the tape backing. Position the Splash Shield and secure with the supplied push pin. Apply firm even pressure on the double sided tape to ensure proper adhesion.



4 With the Splash Shield mounted, you can now drill the additional mounting holes. Begin by drilling a 1/4" hole through the Splash Shield into the fender liner. Install the supplied push clip.

Rear Splash Guards



5 Now access the bottom of the rocker, drill the final mounting location with a 1/4" drill bit. Install the supplied push clip.



1 Raise and support the rear of the vehicle. Remove the factory splash shield retaining clip.



2 Clean the tape mounting surface with the supplied alcohol wipe. Allow time for the surface to dry. Then apply the supplied adhesion promoter and allow it to haze.



3 Remove the tape backing and mount the Splash Shield with the supplied push pin. Apply firm even pressure to the taped surface to ensure proper adhesion.



4 From below, drill the addition mounting location using a 1/4" drill bit. Mount using the supplied push clip.