

MP CONCEPTS

15-17 GT350 Style Rear Bumper Kit

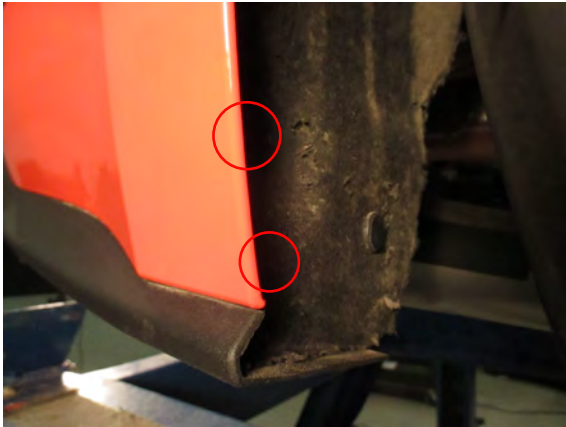
Designed to be used with aftermarket muffler only, single tips will require trimming. Will NOT work with factory mufflers.

Step 1:

Jack the rear of the vehicle up and support with jack stands.

Step 2:

Remove (3) fender liner clips to gain access to the bumper cover bolts.



Step 3:

Fold the fender liner out of the way to access the (3) bumper cover bracket bolts.



Step 4:

Remove the (2) 7mm bolts securing the bottom of the bumper.



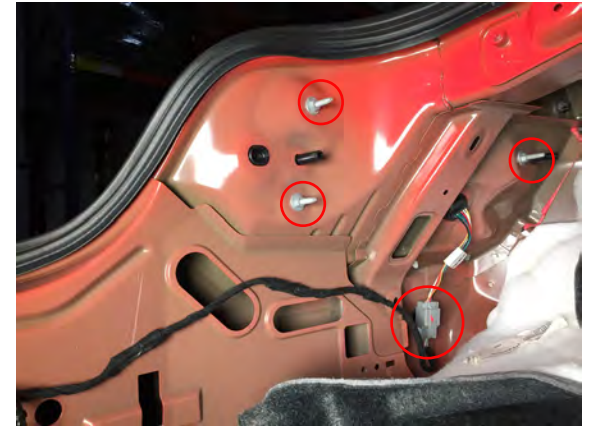
Step 5:

Remove the trunk trim panel by unscrewing the 4 cargo net fasteners.



Step 6:

Fold back the trunk liner to access the (3) nuts that hold the tail light to the vehicle. Unclip the electrical connection and remove the tail light from the vehicle.



Step 7:

Pull the bumper away from the vehicle on both sides.



Step 8:

Firmly pull the bumper from the vehicle. The top edge of the bumper is only held on by clip pressure.

**Step 9:**

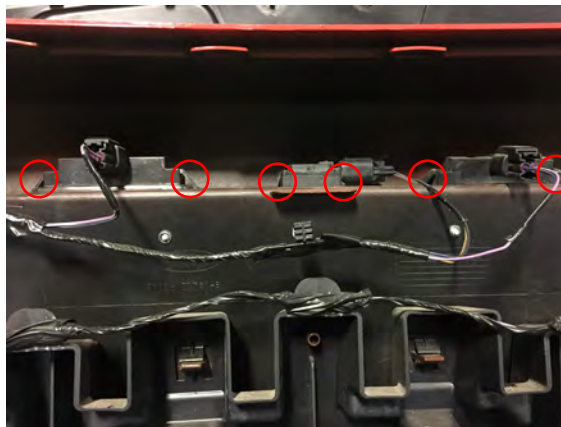
Unclip the wiring harness from the chassis.

**Step 10:**

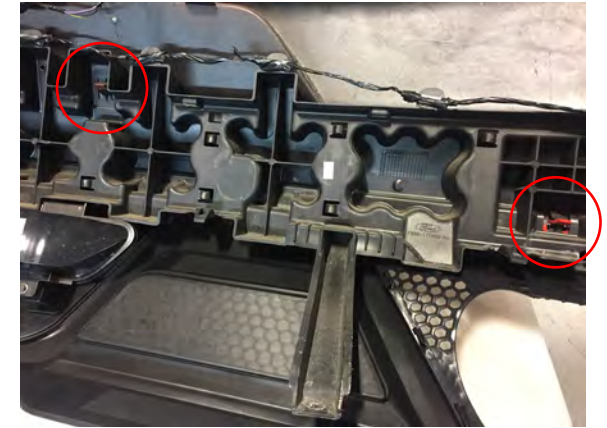
Unplug the rear marker lights and remove the wiring harness clips from the bumper cover. Then remove the rear marker lights and transfer them to the new bumper cover.

**Step 11:**

Unclip the license plate light housing and trunk button.

**Step 12:**

Unclip the bumper brace bracket from the bumper cover.
**Note: If equipped unplug and remove the backup sensors.

**Step 13:**

Transfer the screw clips from the factory bumper over to the diffuser.

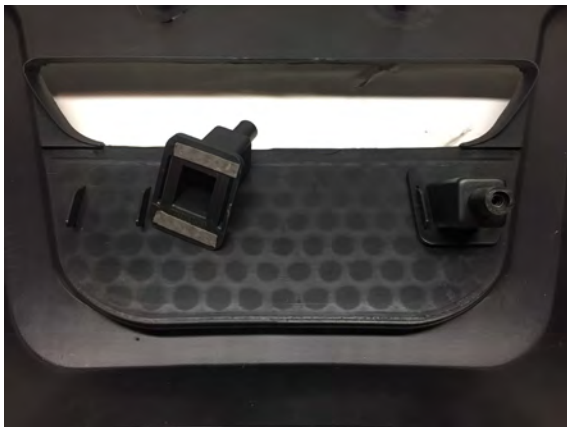


Step 14:

Install the rear diffuser panel to the bumper cover.

**Step 15:**

Install the supplied reverse light screw bosses using double sided tape. Align the bosses with the tabs on the diffuser.

**Step 16:**

Install the reverse light using the factory screws.

**Step 17:**

If equipped with backup sensors, apply double-sided tape to the backup sensor brackets. Drill the hole for the backup sensors. There are marks in the bumper for where to drill and mount the brackets.

**Step 18:**

Transfer the reflectors from the factory bumper to the new bumper. They are held on with a 10mm nut.

**Step 19:**

Clip the bumper brace with the wiring harness to the new bumper. It will clip on using the factory center clip locations.



Step 20:

Install the mesh inserts by clipping them onto the diffuser clips. ****Note:** If using an aftermarket single tip muffler trim along the dotted lines below.

**Step 21:**

Install the bumper in reverse order. Ensure this connector doesn't get pinched between the bumper cover brace and the metal bumper otherwise, the bumper will not fit correctly.

