



1994-1995 Mustang GT Throttle Body Engine: 5.0L V8

Contents:

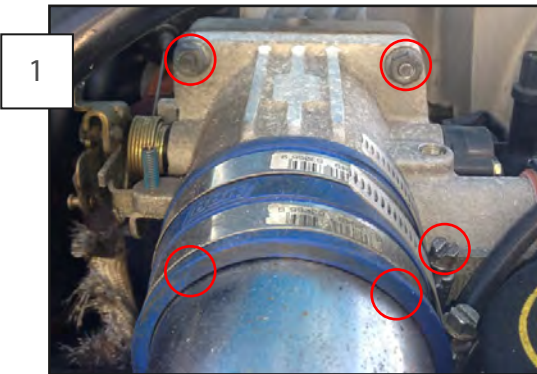
- (1) - Throttle Body
- (1) - Throttle Body Gasket
- (1) - IAC Gasket

Tools Needed:

- Socket Wrench
- Socket Extension
- 7mm Socket
- 8mm Socket
- 13mm Socket
- 4mm allen bit
- volt meter



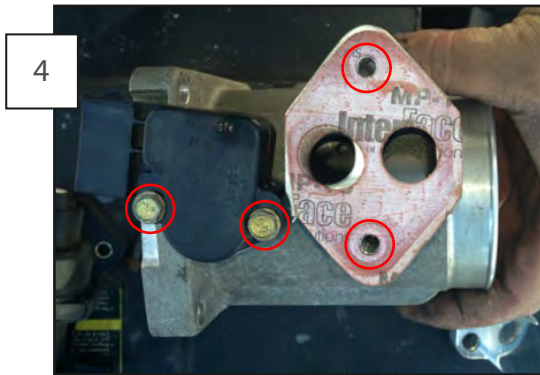
It is recommended that you have an additional person available to help during this installation, parts can be awkward to hold and support by yourself. Block wheels and set parking brake before beginning work. Remove the negative battery cable from the battery.



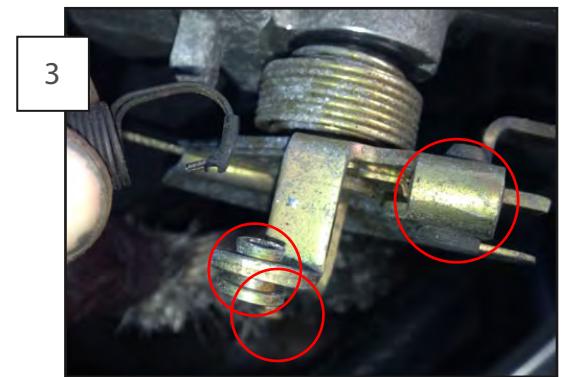
Remove the (1) upper intake tube hose clamp. Move the tube out of the way from the throttle body. Remove the (4) 13mm throttle body retaining nuts.



Unplug the Idle Air Control and Throttle Position Sensor electrical connectors.



Remove the (2) IAC mounting bolts. Remove the IAC, then remove the (2) TPS screws and remove the TPS. Reinstall all of the components on the new throttle body. Use the included gaskets on the IAC and the throttle body / intake manifold. Reattach the upper intake tube and electrical connections. Set the engine idle speed and TPS voltage. If desired TPS voltage isn't obtained, the 4mm allen bolts can be loosened to rotate the TPS mount and reinstalled.



Remove the throttle cable by rotating the throttle to wide open throttle and slipping the cable out the side slot. Remove the return spring by pulling it out to the side and around to remove the hook. Remove the cruise control by pulling up on the plastic tip until it pops loose from the mount.

SETTING THE ENGINE IDLE SPEED

1. Make sure ignition is turned OFF.
2. Disconnect the IAC connector.
3. Start engine and let the car warm up to operating temperature.
4. Turn the throttle plate stop screw counter-clockwise until idle is at ~650 rpm. Note: Modified engines may require a higher base idle rpm.
5. Turn off the engine and reconnect IAC connector.

SETTING THE TPS VOLTAGE

1. Turn key to ON position but do not start engine.
2. Using a digital voltmeter, measure the voltage between the green and black wires.
3. The voltage should read between 0.8v and 1.0v. A reading of 0.9 to 0.95 is ideal.
4. The TPS can be adjusted by loosening the two screws on the throttle body and rotating it.
5. Once the proper setting is achieved, tighten the screws.
6. Re-check voltage after screws are tightened to make sure the TPS has not moved.