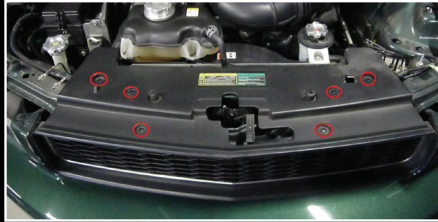


Step 1

Begin by jacking the car up and removing the front wheels. This will make it easier to access the inner fender wells.

Step 2

Remove the 6 clips holding down the plastic upper radiator shield and remove it from the vehicle.



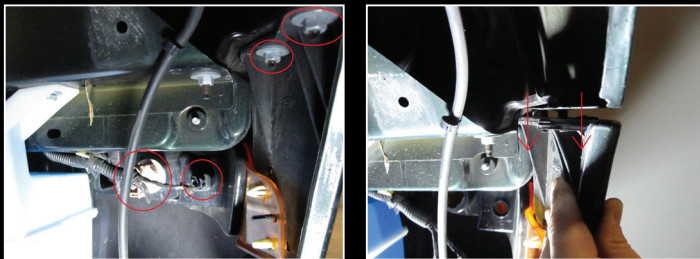
Step 3

Remove the inner fender well on each side of the car by removing the 5 plastic retaining clips as well as the three sheet metal screws shown in the photos below.



Step 4

With the inner fenders removed, remove the parking lamp sockets from the housings on both sides of the vehicle. Using a 10mm socket, remove the 4 lower bumper mounting bolts (2 per side). Once all 4 nuts are removed, pull the bumper down on the side to release it from the mounting studs as shown.



Step 5

Using a 5.5mm socket, remove the 3 bolts holding the lower splash shield to the radiator support.



Step 6

Using a 10mm socket, remove the 2 upper bumper cover mounting bolts and pull the cover over the small plastic tabs shown in the photo below.



Tools Required:

- Phillips-Head Screwdriver
- Flat-Head Screwdriver
- Pliers
- 10mm, 5.5mm sockets or wrenches

Step 7

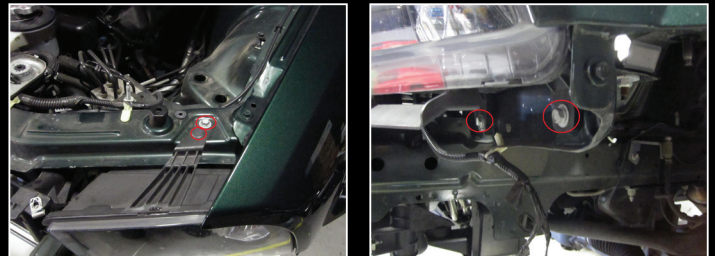
At this point the bumper cover is loose and can be removed from the vehicle. It helps to have an extra set of hands, but it can be done properly by one person as well. Holding the grille, pull the bumper cover slowly from the vehicle and place it on something soft so the paint will not be damaged.



Note: If you have a GT with fog lights, be sure to disconnect the fog light harness before completely removing the bumper.

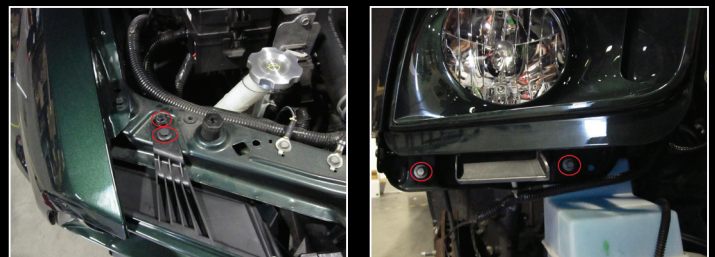
Step 8

Remove the two plastic retaining clips (1 per side) and with a 10mm socket, remove the 6 bolts (3 per side – 1 upper on each side and 2 lowers) securing the factory headlights to the vehicle. Unplug the factory wiring harness and remove the factory headlights.



Step 9

Install your new headlights by plugging them into the factory wiring harnesses and re-installing the 6 bolts and 2 clips you removed in Step 8.



Step 10

It is a good idea to ensure proper operation of both high and low beam lights at this point. Once everything is confirmed to be working properly, repeat Steps 1-5 in reverse order to complete the installation.



**INDUSTRY LEADING
2 YEAR FULL WARRENTY**