

## Ford Racing Front Lower Control Arm Brace – Coupe (05-12 GT):

### Tools needed:

- ✓ 5/8" deep socket drive (enough to fit over nut and stud)
  - 16mm socket can also fit, though I found the 5/8" to be a much better fit
- ✓ Torque wrench capable of 46 ft-lbs.
- ✓ Safety glasses are a great idea to keep under-car debris out of your eyes

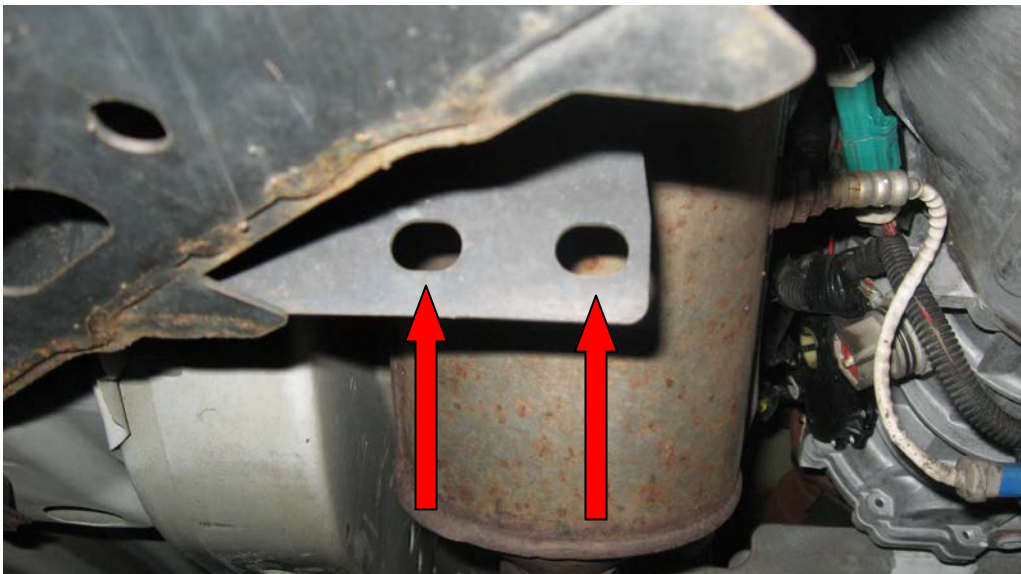
**Estimated Install Time:** Approximately 30 minutes to 1 hour

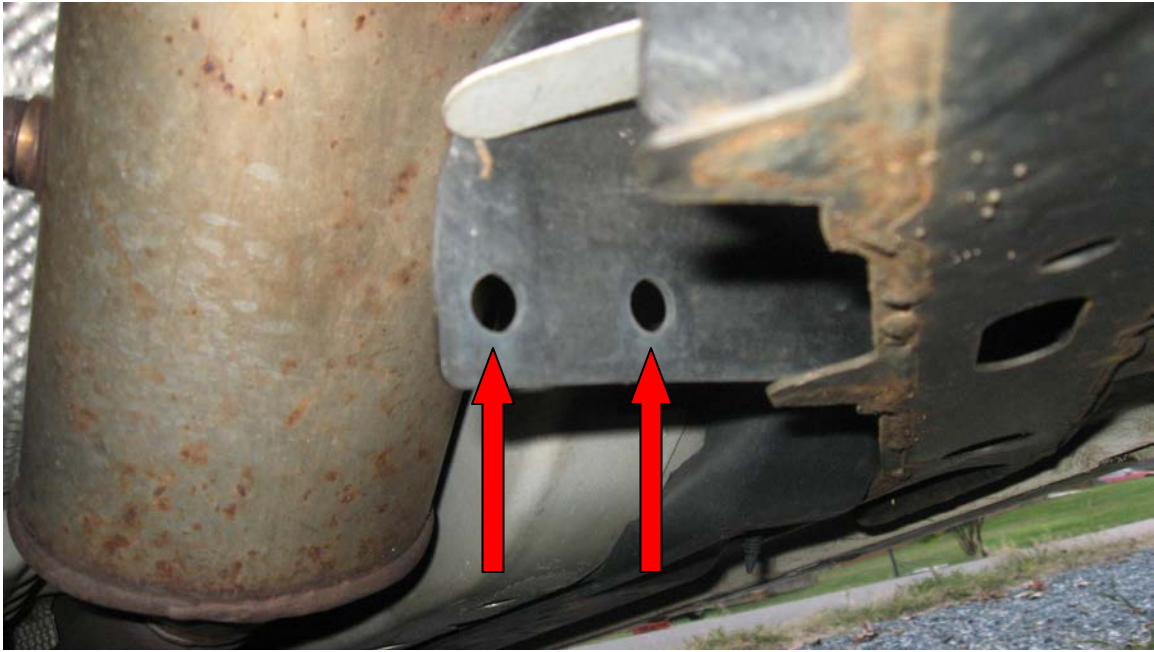


**Before Beginning:** Make sure all hardware is accounted for. Please see photo above showing everything included. The nuts should be in a separate plastic package upon delivery.

### Installation:

1. The holes shown in the following two photos will show where the studs of the brace are mounted to. They are located by the front of the transmission on the bottom of the K-member.

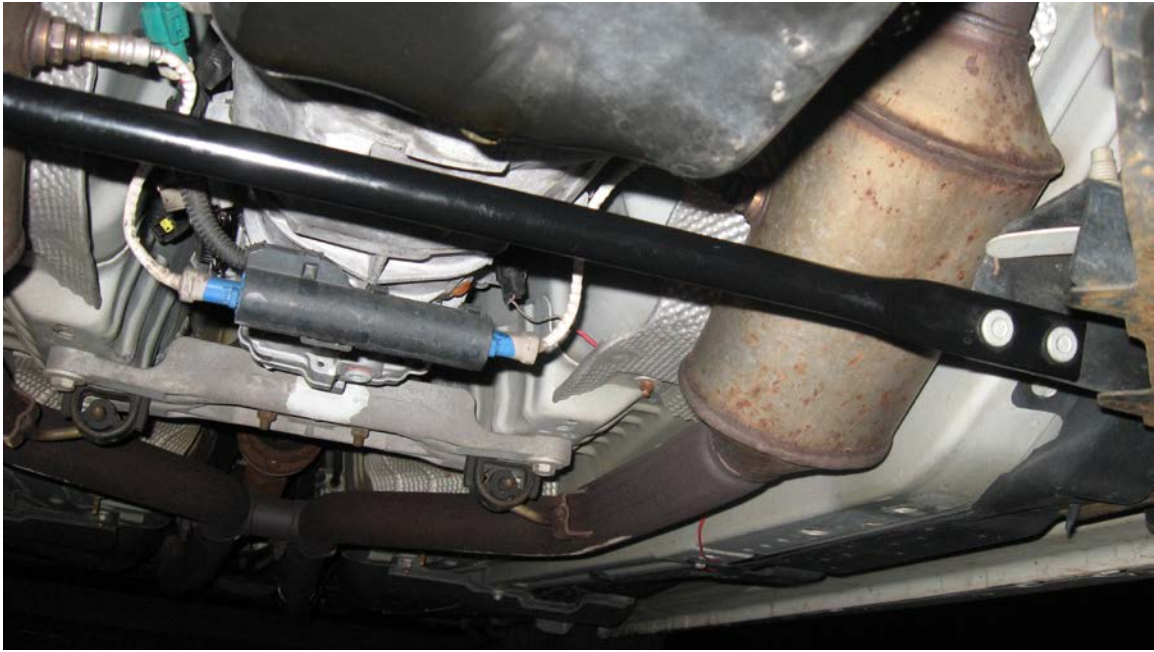




2. Insert the (4) studs on the brace into the holes with the studs/nuts facing towards the rear of the car.

3. Tighten down the nuts to 46 ft-lbs with a 5/8" socket.

**Note:** Make sure the socket you're using is just deep enough to reach over the nut.



**End product shown above – Front Lower Control Arm Brace installed**

4. Not too hard of a job at all! Once all nuts are torqued to spec, double check everything for good measure and enjoy your new modification!

Installation Instructions written by AmericanMuscle customer BJ Brennan 10.6.11