

SR Performance 16 in. Performance Slim Electric Radiator Fan w/ Shroud (79-14 All)

Required Tools:

Ratchet
8mm socket
10mm socket
Pliers
Metal straps
Nuts, Washers, Bolts



Metal Strap Kit \$7

Included Parts:

Fan Shroud
16 inch electric fan
Two bolts w/washers

BEFORE Installation Instructions:

1. Disconnect battery.
2. Unbolt radiator reservoir and move to the side.



3. Unplug stock/OEM electric fan.
4. Remove all 8mm bolts from the stock fan shroud.



5. Slide stock radiator fan up and out of the engine bay.
6. Remove the passenger side top radiator mounting bracket



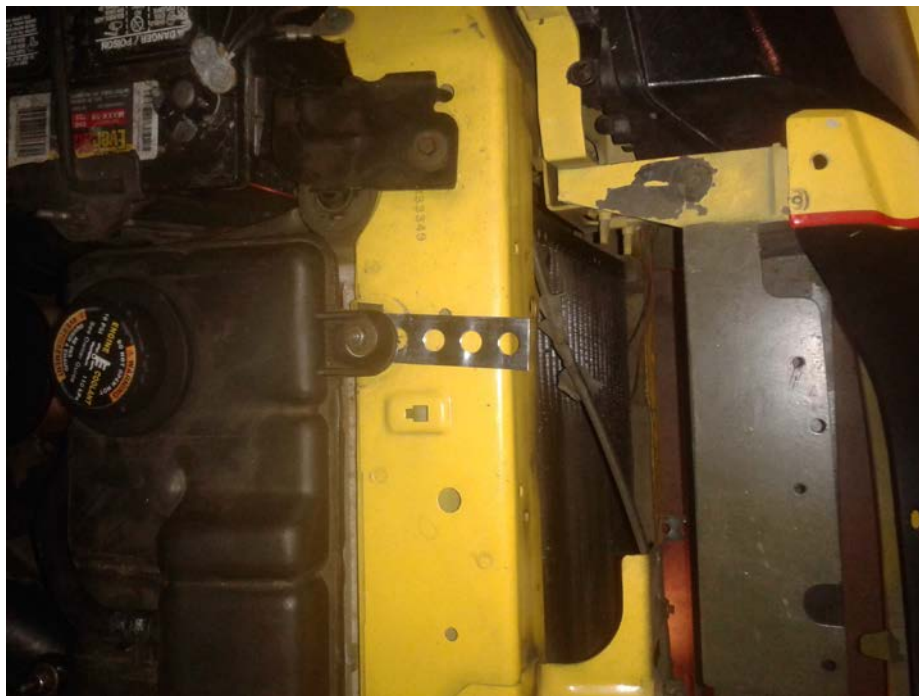
Installation Instructions:

1. Lower new Radiator/Fan shroud into engine bay against the radiator.



2. Take the metal strap and bolt it to the fan shroud using the tab on the top right of the shroud (Driver side tab)

3. Mold and cut strap to length using snips or pliers, use the existing stud for the reservoir tank to hold down the other end of the strap.



4. Now bolt a second strap to the left side top tab (passenger side)
5. Mold and cut strap to length and place the other end under the upper radiator mount tab **not the bolt hole** (alignment issues)



6. Bolt the radiator mount back into place.
7. Bolt the reservoir back into place.
8. The last strap I used on the bottom I unbolted the bottom fan bolt and ran the strap through the bolt.
9. The other end of the strap I ran to the bottom portion of the stock radiator reservoir bracket located under the radiator support.



Wiring:

Wiring up the fan I will mostly leave up to your discretion as I spliced the fan into the stock wires and I am most likely going to run the fan from a switch due to the stock fan has variable speeds, just note that the black is ground on both your cars harness and the new electric fan.

After you have figured out your wiring, reconnect the battery.

Start your car up, let it warm up and check to see if everything is working properly.

Installation Instructions written by AmericanMuscle Customer Joseph Brookshier 12.20.2014