

Tools Required:

Masking tape

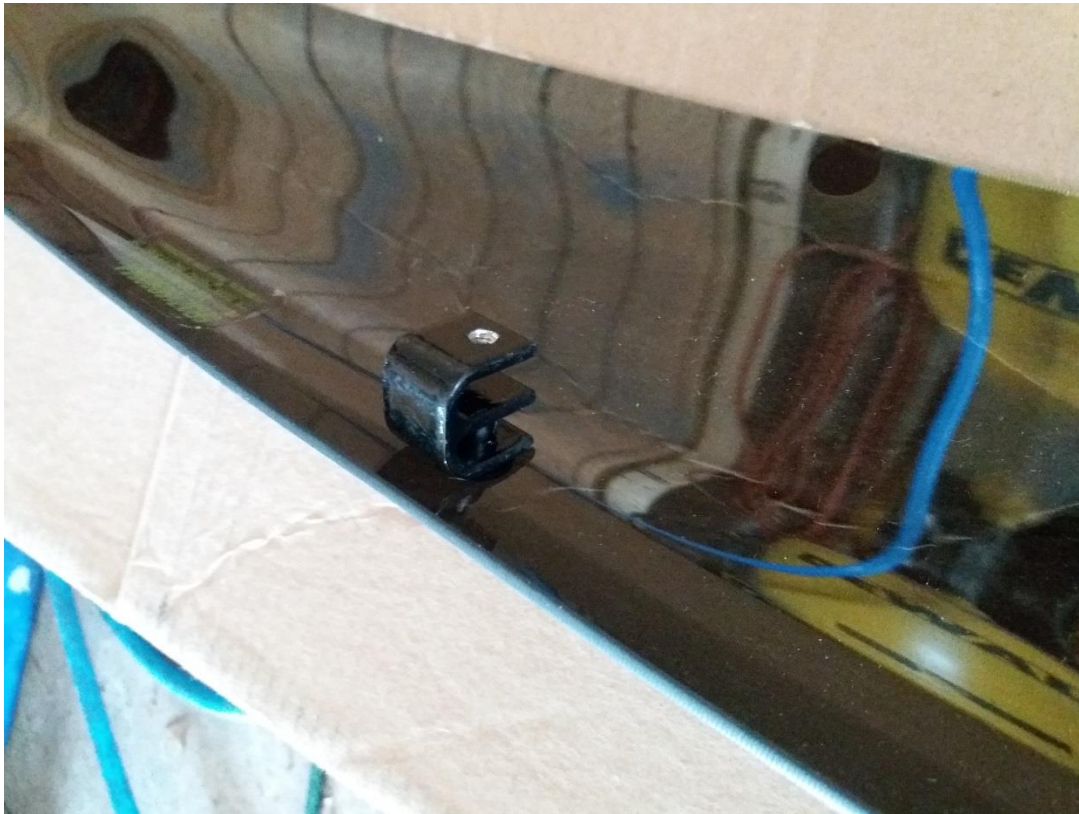
Phillips head screwdriver

Tape measure

Allen key (included)

1. When you receive your hood deflector first check that you have all the necessary hardware. Use caution opening the hardware bag as there are some small screws that can easily be lost. In the bag you should have:
 - 4 “E” shaped brackets
 - 4 Allen studs
 - 4 Rubber guards
 - 4 Plastic expansion screws
 - 4 Strips of clear tape
 - 2 Alcohol wipes
 - 1 Allen key
2. First use the wipes to clean the bottom 3 inches of your hood where the deflector will be installed.
3. Attach all 4 “E” brackets to the deflector using the plastic expansion screws.



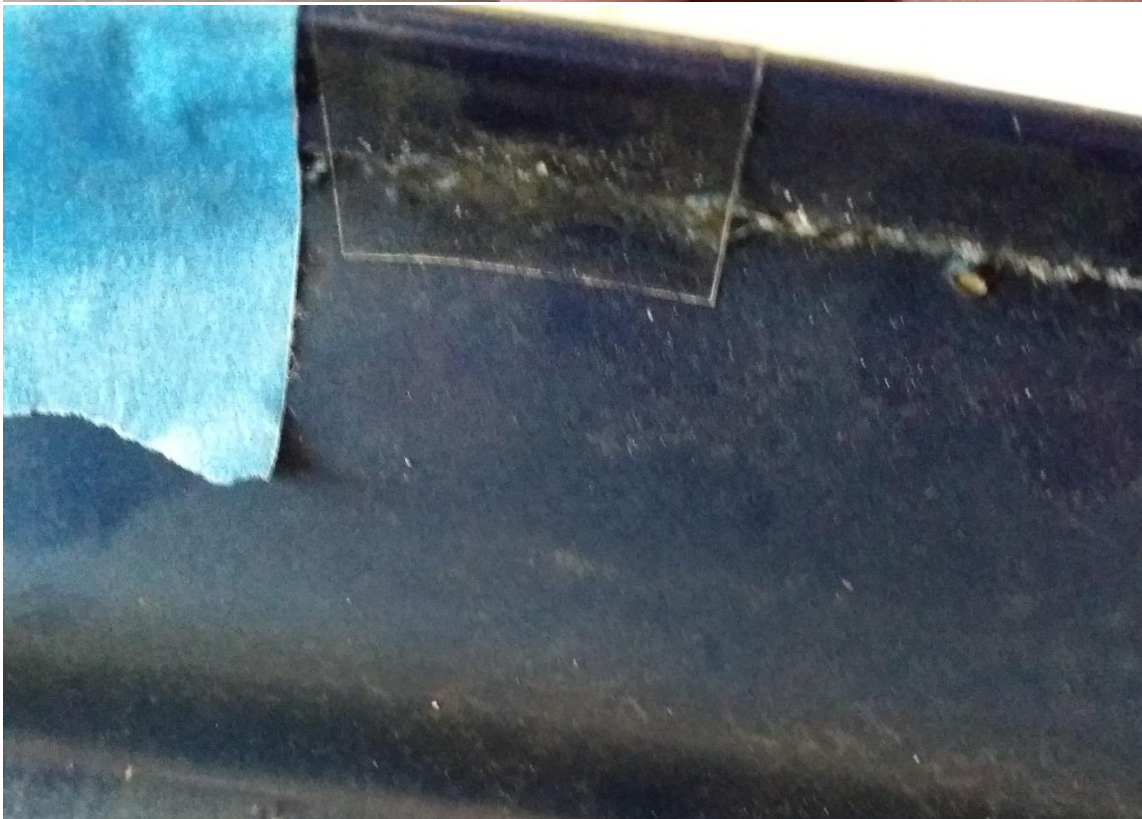


4. Now with all 4 brackets attached open your hood and slide the deflector onto the hood. Use a tape measure to help ensure that the deflector is perfectly centered. I found that there should be $4\frac{1}{4}$ inches between the last bracket and the corner of the hood on each side.



5. Now with the deflector mocked up perfectly center mark the location of each bracket on the underside of the hood. I did this by putting a piece of masking tape along the inside of each bracket.

6. Next, it's time to install the clear tape. This clear tape goes on the hood under each bracket to protect your paint in case you ever want to remove the deflector. Fold each piece of tape in half so that it will easily fold over the hood. Then using the masking tape you used to mark the location of each bracket adhere the clear tape to the hood where the bracket will attach.





7. Now thread each allen stud half way into the “E” bracket. Caution these studs are easy to cross thread.



8. It is now time to install the deflector back on the hood and tighten down each allen stud to lock the deflector onto the hood.
9. The final step is to install the 4 rubber guards under the deflector on the hood. Simply remove the backing paper from the bottom of each guard and stick them to the hood lined up with each plastic screw about 3/4 inch down from the top of the deflector.



Installation is now complete!



Installation guide created by AM Customer Brandyn Johnson on 03/16/2017