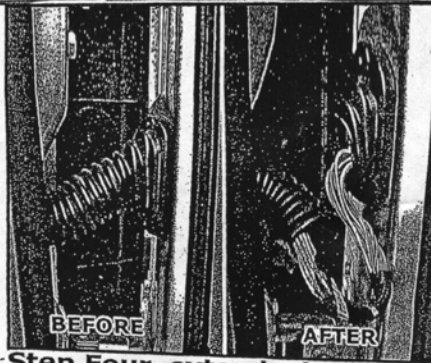
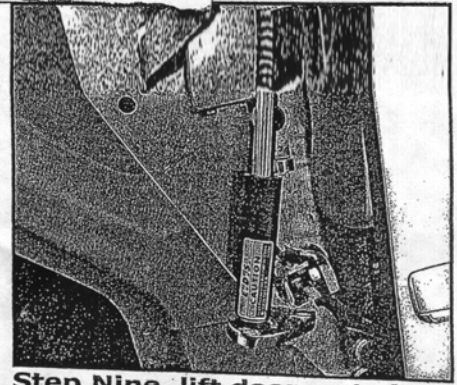


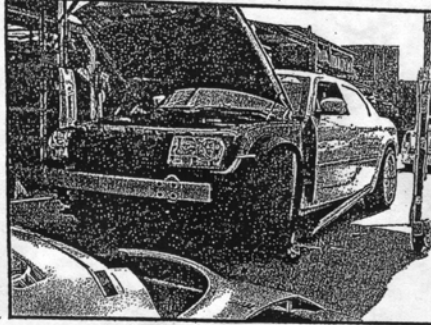
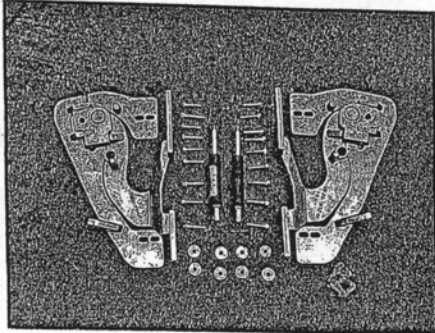
Before Install



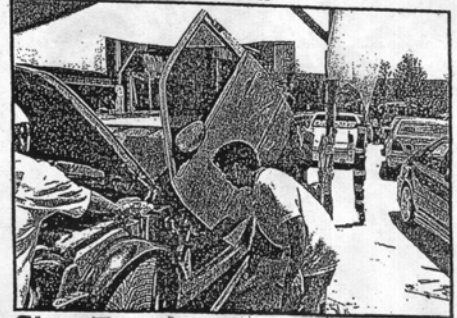
Step Four, extend wires by pulling wires forward.



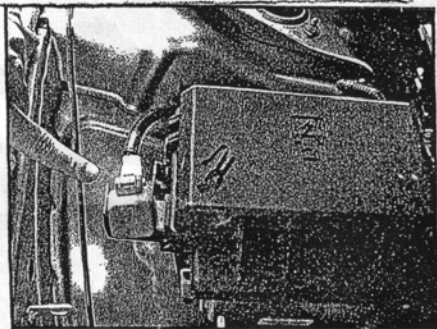
Step Nine, lift door up to install reinforced shock.



Step Five, remove fenders and side skirts. (bumper if needed)



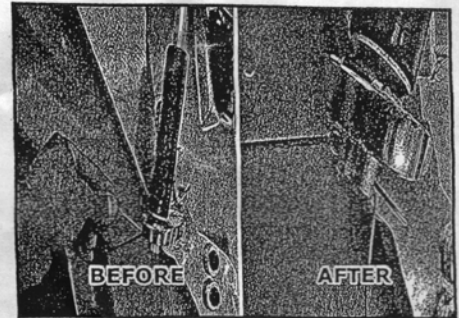
Step Ten, insert shock into lower ball joint and hand tighten into upper "L" bracket.



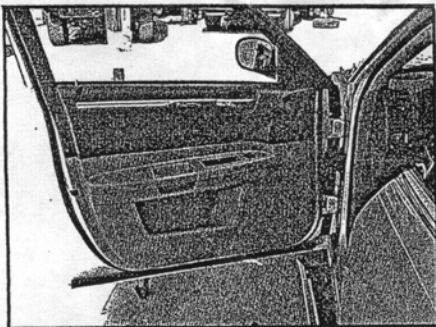
Step One, remove positive and negative connections on terminal.



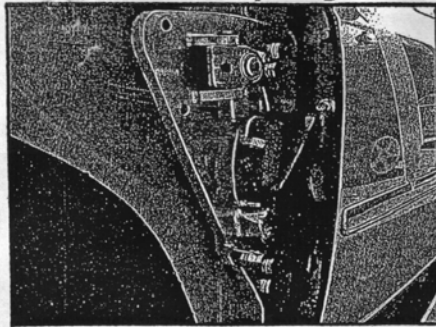
Step Six, tape doors securely, (as shown above) and begin to remove factory hinges.



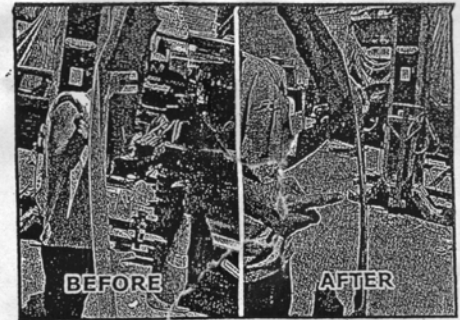
Step Eleven, insert locking pin into base at bottom of the shock.



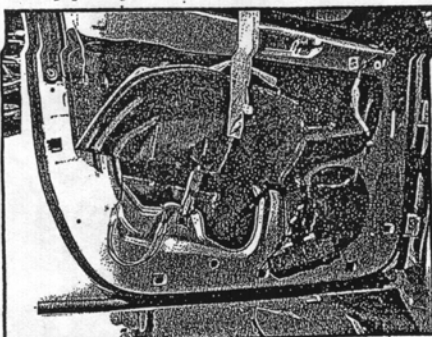
Step Two, open door to full extent & remove door stopper.



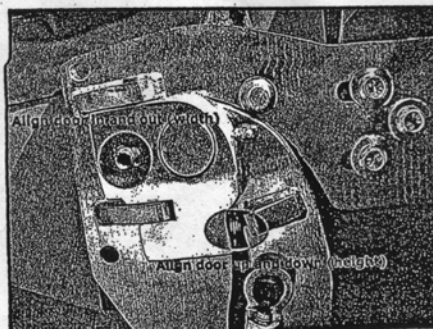
Step Seven; hold hinge up and align holes, hand tighten bolts and check alignment.



Step Twelve, Trim fender edges back until the hinge clears fender.



Step Three, remove door panel & clips that hold



Step Eight, adjustment points to align doors.