

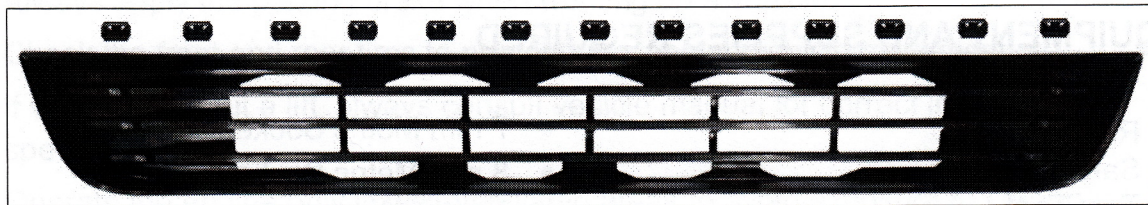
ROUSH[®]
P E R F O R M A N C E

2013 Mustang Lower Grille Kit

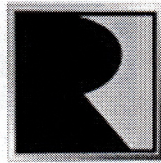
P/N: 421496 (R1313X-17K945)

Application: 2013 Ford Mustang GT and V6

Installation Instructions



Before installing your ROUSH Performance Product(s), read through the entire installation procedure and check to make sure all items are present. Contact ROUSH Customer Service at 1-800-59-ROUSH, weekdays from 9:00 AM to 5:00 PM EST, with any questions regarding fit, missing parts or instructions that are unclear to you.



ROUSH[®]
P E R F O R M A N C E

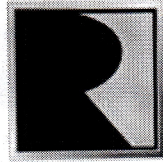
Description	Part Number	Qty
2013 Mustang Lower Grille Kit	R1313X-17K945	1
Grille Lower	1313X-17K945	1
Retaining Clips	20860	13
Tape, 10 mm x 1.5 mm x 830 mm	TAPE-015-10X830	1
Tape, 10 mm x 1.5 mm x 750 mm	TAPE-015-10X750	1
Adhesion-Promoter	021200-27571	1
Installation Manual	1313X-17K945IM	1

EQUIPMENT AND SUPPLIES REQUIRED

- Ratchet
- Safety Glasses
- Trim Tool
- Air Saw or Suitable Cutting Tool
- 7 mm Metric Socket
- 8 mm Metric Socket
- Torque Wrench

LIMIT OF LIABILITY STATEMENT

The information contained in this publication was accurate and in effect at the time the publication was approved for printing and is subject to change without notice or liability. ROUSH Performance Products (RPP) reserves the right to revise the information presented herein or to discontinue the production of parts described at any time.



ROUSH[®]
P E R F O R M A N C E

SAFETY REQUIREMENTS

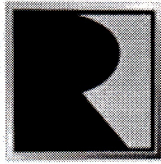
STOP! READ IMPORTANT SAFETY CAUTIONS AND WARNINGS BEFORE PROCEEDING.

Appropriate disassembly, assembly methods and procedures are essential to ensure the personal safety of the individual performing the kit installation. Improper installation due to the failure to correctly follow these instructions could cause personal injury or death. Read each step of the installation manual carefully before starting the actual installation.

- Always wear safety glasses for eye protection.
- Place ignition switch in the OFF position.
- Always apply the parking brake when working on a vehicle.
- Chock the front and rear tires to prevent unexpected vehicle movement.
- If working without a lift, always consult vehicle manual for correct lifting specifications.
- Operate the engine only in well-ventilated areas to avoid exposure to carbon monoxide.
- Do not smoke or use flammable items near or around the fuel system.
- Use chemicals and cleaners in well-ventilated areas.
- Batteries produce explosive gases, which can cause personal injury. Therefore, do not allow flames, sparks or flammable substances to come near the battery.
- Keep hands and any other objects away from the radiator fan blades.
- Keep yourself and your clothing away from moving parts when the engine is running.
- Do not wear loose clothing or jewelry that can get caught in rotating parts or scratch surface finishes.
- Allow the engine, cooling system, brakes and exhaust to cool before working on a vehicle.

WORK SAFELY!

Perform this installation on a good clean level surface for maximum safety and with the engine turned off.



ROUSH[®]
P E R F O R M A N C E

SECTION A – Removal

The following section will guide you through the removal of the factory lower grille.

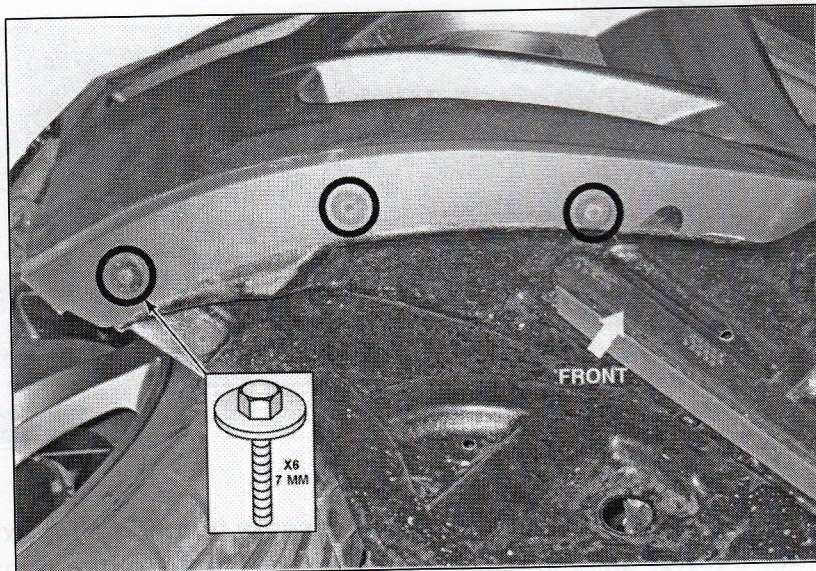
1. Turn the steering wheel fully to the right to gain access to the two (2) 7 mm bolts on the LH side of the vehicle. Repeat on the RH side of the vehicle, turning the steering wheel fully to the left.
 - To install, tighten bolts to 1.3 Nm (12 lb-in).



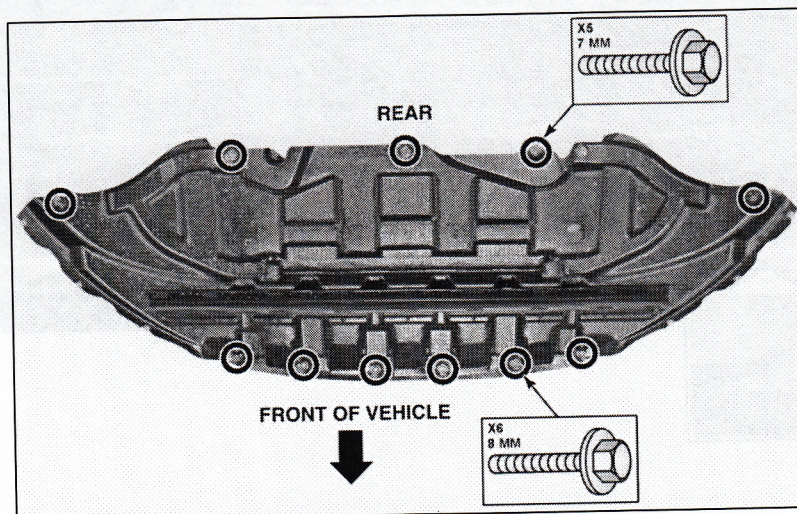


ROUSH
P E R F O R M A N C E

2. Remove the three (3) 7 mm outer valance bolts on the RH side. Repeat on the LH side.
 - To install, tighten bolts to 3.2 Nm (28 lb-in).



3. Remove the front six (6) 8 mm bolts, the rear five (5) 7 mm bolts and pull down and back to remove the lower air deflector.
 - To install, tighten bolts to 3.2 Nm (28 lb-in).

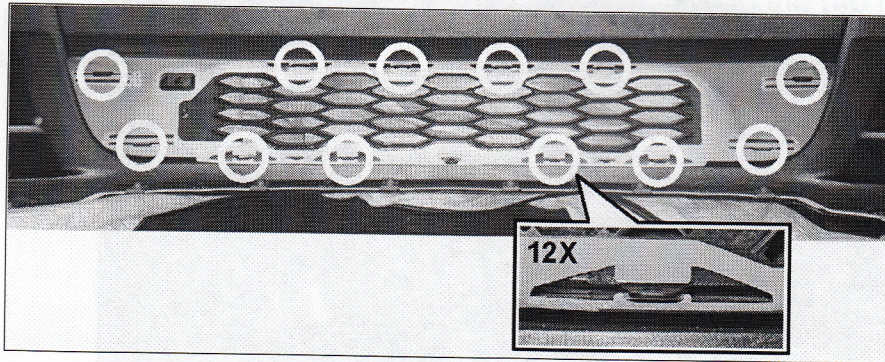




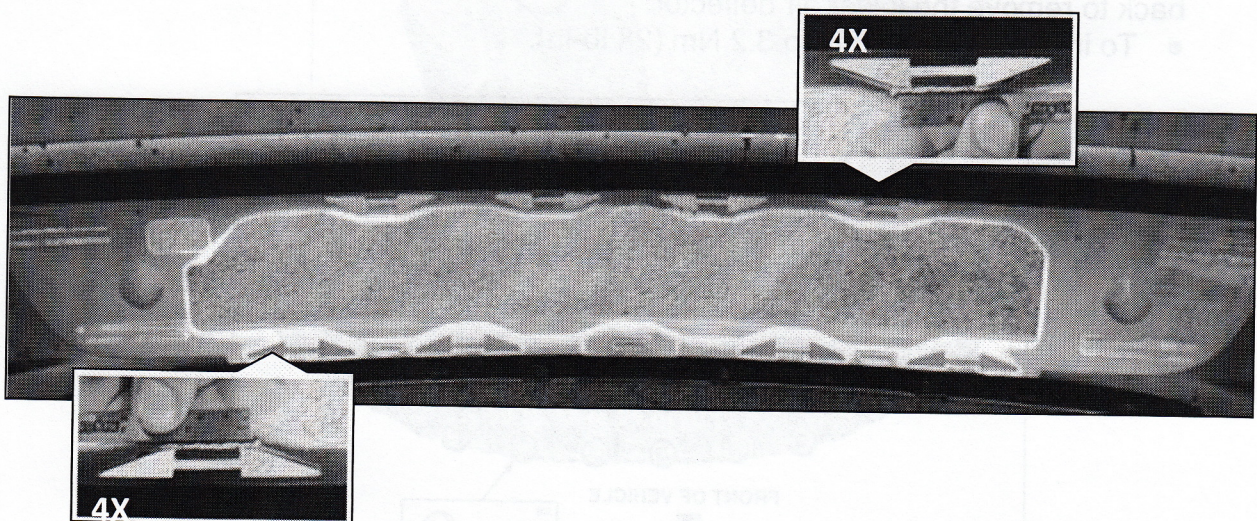
ROUSH[®]
P E R F O R M A N C E

4. From the underside of the vehicle, access the rear of the lower grille. Using a suitable trim tool, release the twelve (12) retaining tabs.

Note: Back side of bumper cover shown.

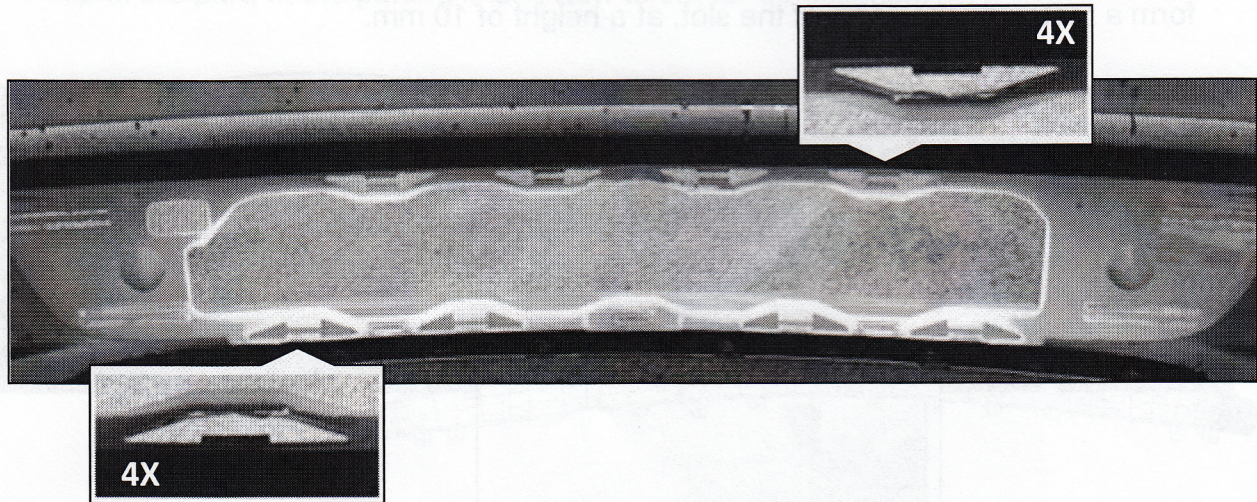


5. Once the lower grille is removed, it will be necessary to modify the existing tab-slots on the front fascia lower grille opening. Mark a cut line along the eight (8) tab slots as shown in the image below. The slots will be cut so they are flush on the inner side of the opening.

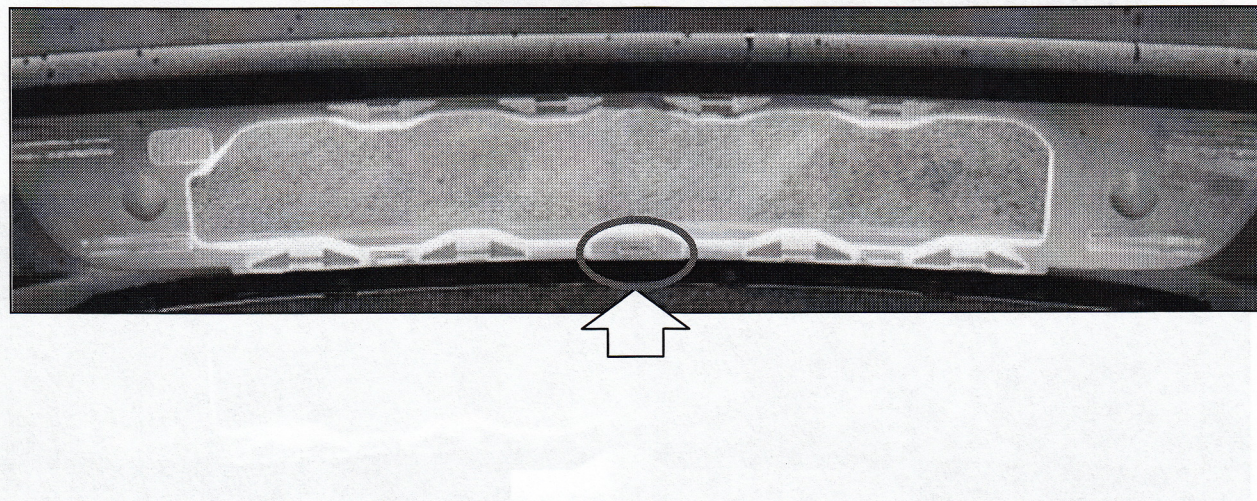


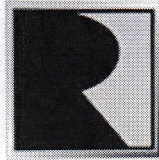


6. Using an air saw, cut along the eight (8) marked lines from step 5 to remove the interfering tab from the lower grille opening.



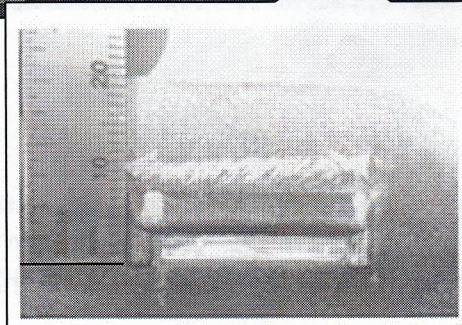
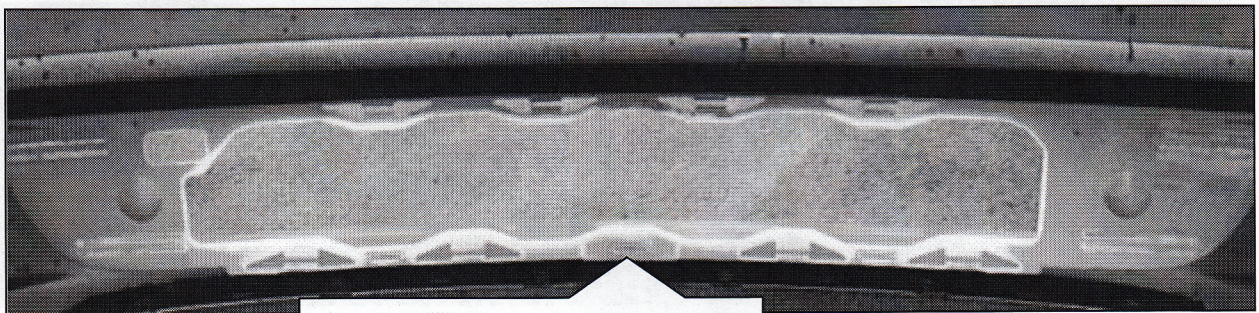
7. Locate the center slot on the lower side of the lower grille opening.



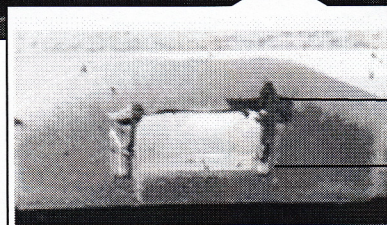
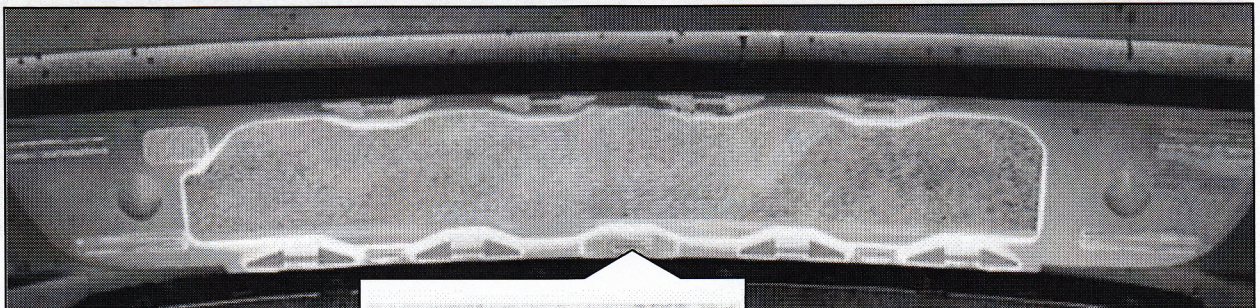


ROUSH[®]
P E R F O R M A N C E

8. Measure 10 mm up from the bottom of the slot. Draw a line parallel to the slot, 10 mm from the bottom of the slot. Connect the lines as shown in the image below to form a rectangle the width of the slot, at a height of 10 mm.



9. Cut along the lines drawn in step 8 to form an open rectangle the width of the slot, at a height of 10 mm.

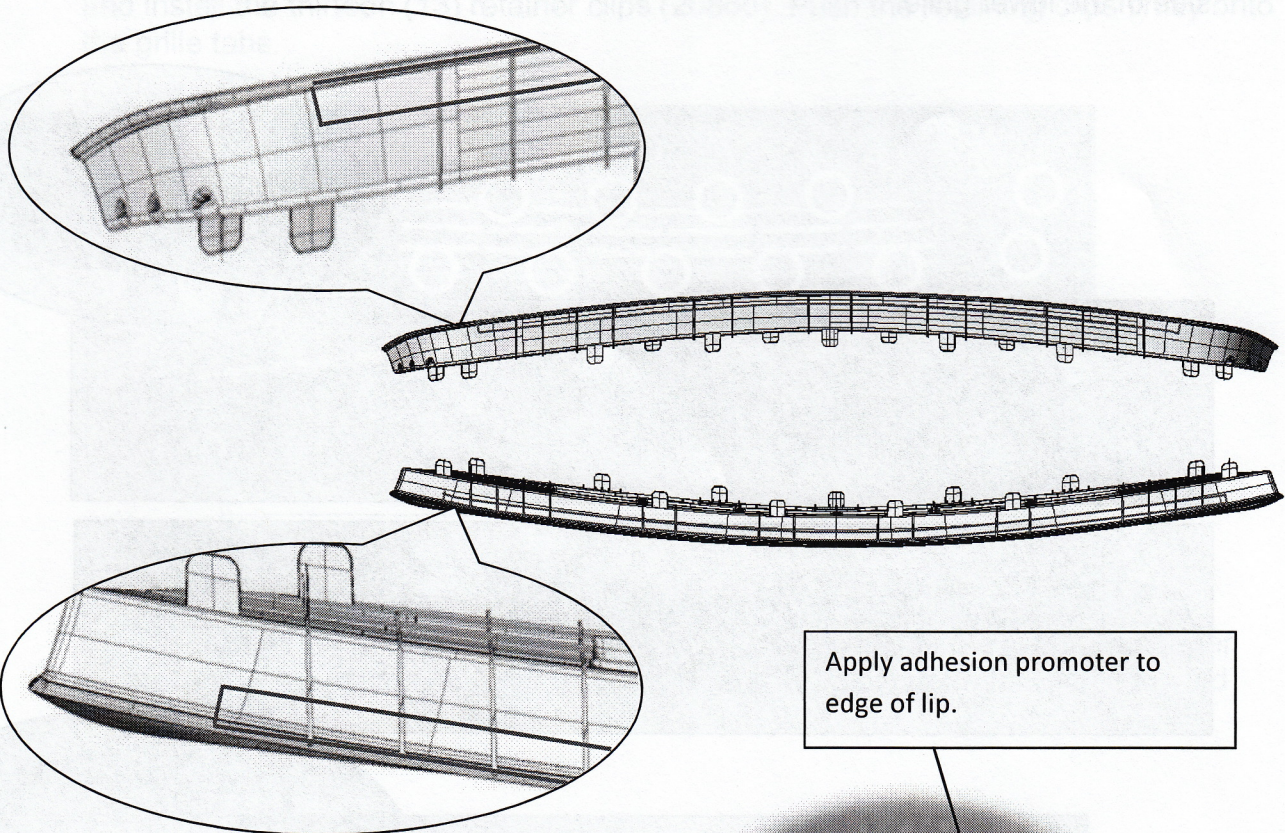


10mm

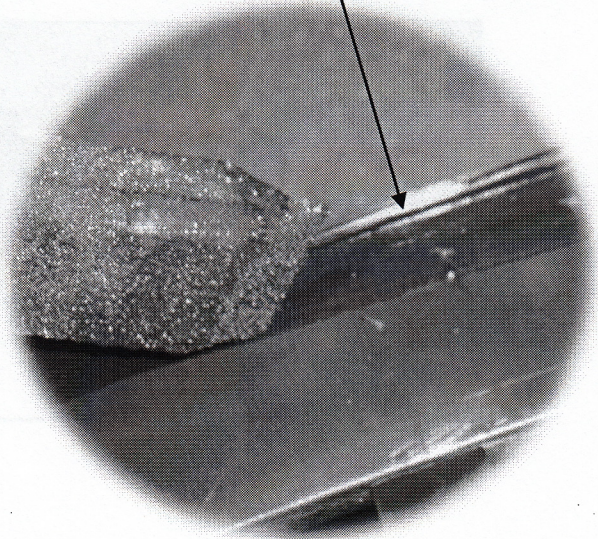


ROUSH
P E R F O R M A N C E

10. Apply adhesion-promoter () to the surface where tape is to be applied. Apply on the lip of the part, at the parting line. Allow to set for 60 seconds.



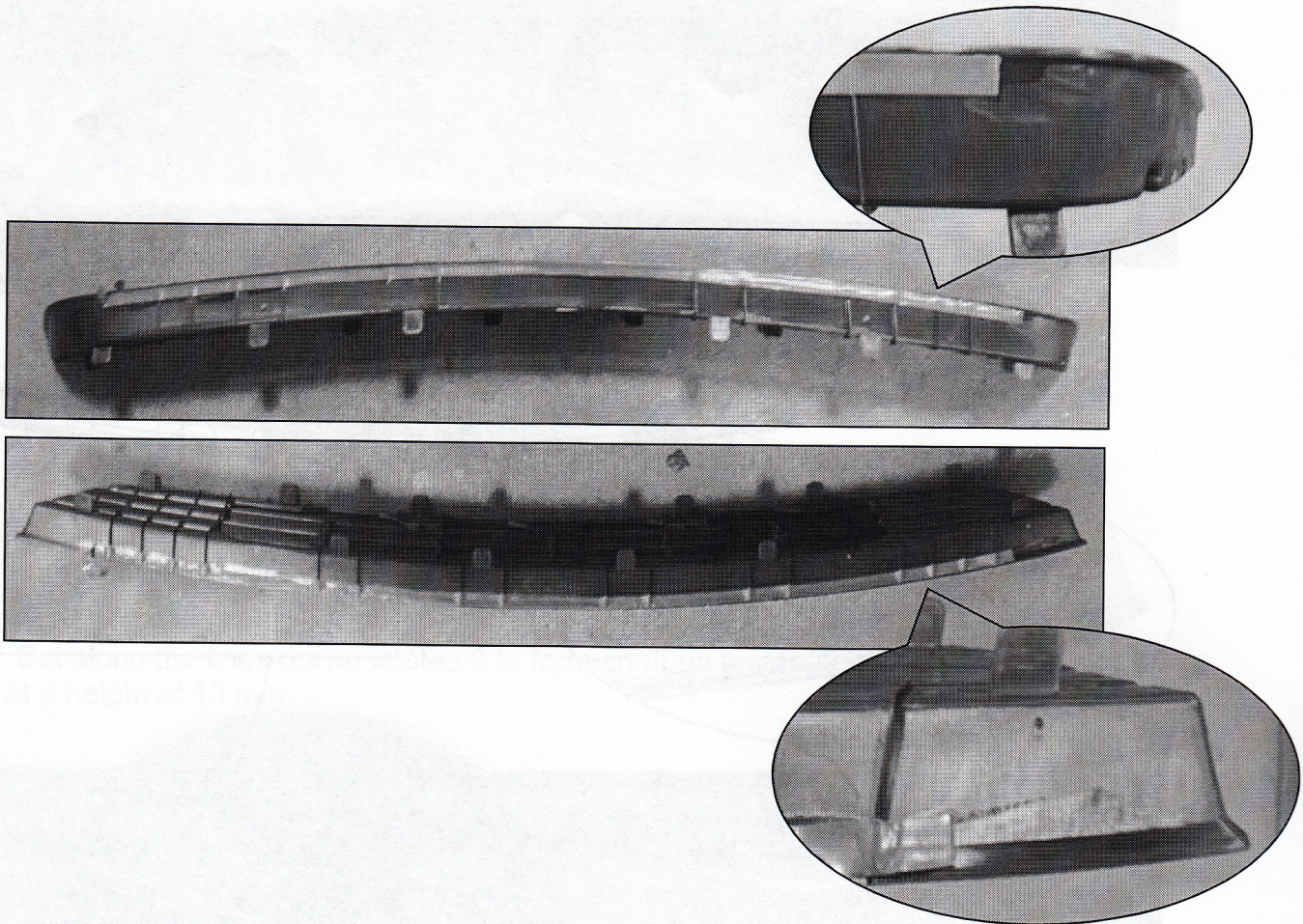
Apply adhesion promoter to edge of lip.





ROUSH[®]
P E R F O R M A N C E

11. Peel the clear backing from the tape and install the tape to the areas where adhesion promoter was applied in step 9. The orientation of the red pull tab is not important. Once the tape is installed, fold the pull tab so it hangs over the finished side of the lower grille.

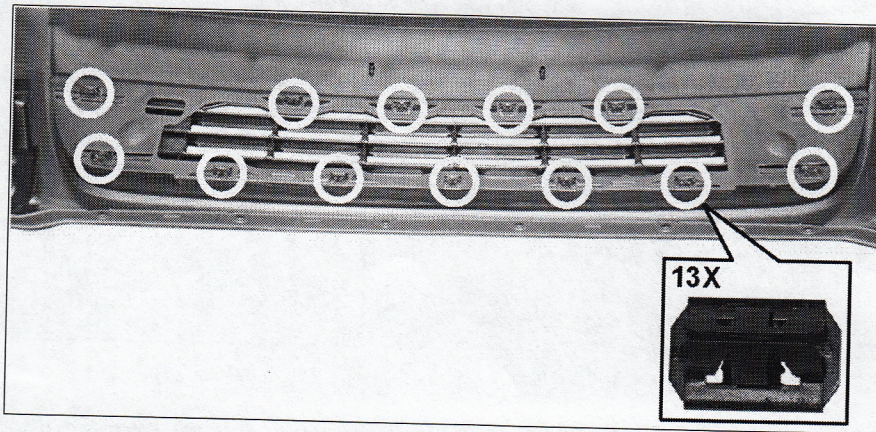




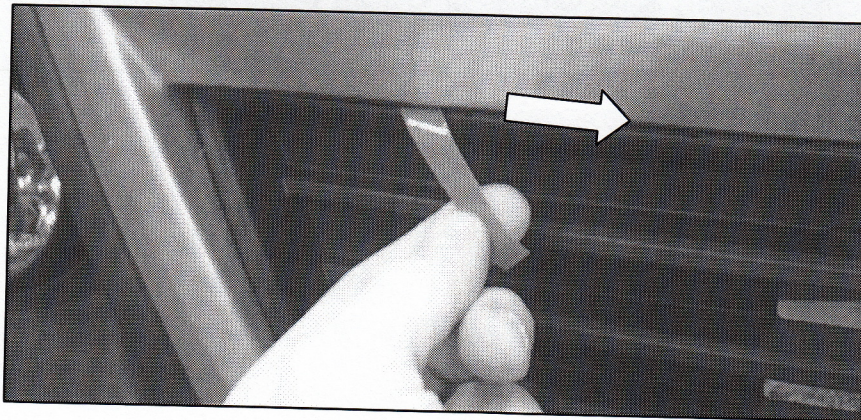
ROUSH[®]
P E R F O R M A N C E

SECTION B – Installation

1. Install the new lower grille; position the grille (1313X-17K945) into the bumper cover and install the thirteen (13) retainer clips (20860). Push the retaining clips firmly onto the grille tabs.



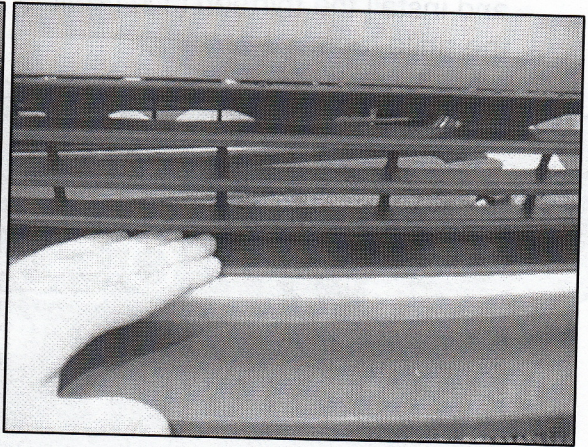
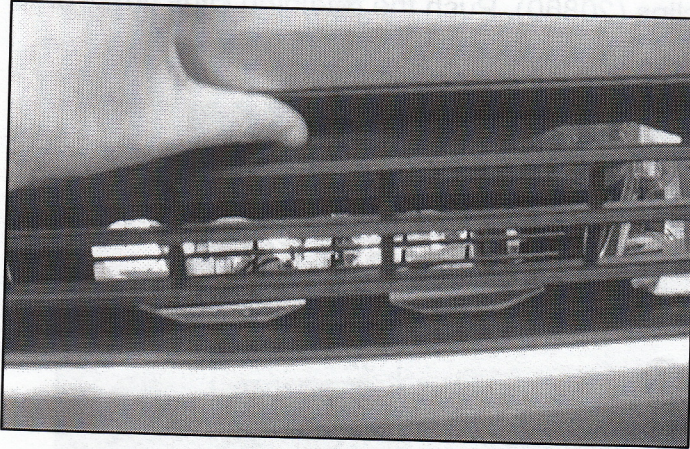
2. With the lower grille installed, remove the red tape film on the lower and upper mounting surface of the grille by grasping the red pull tab and pulling it toward the opposite corner of the grille.





ROUSH[®]
P E R F O R M A N C E

3. To fully adhere the tape, firmly press against the upper and lower surface of the grille

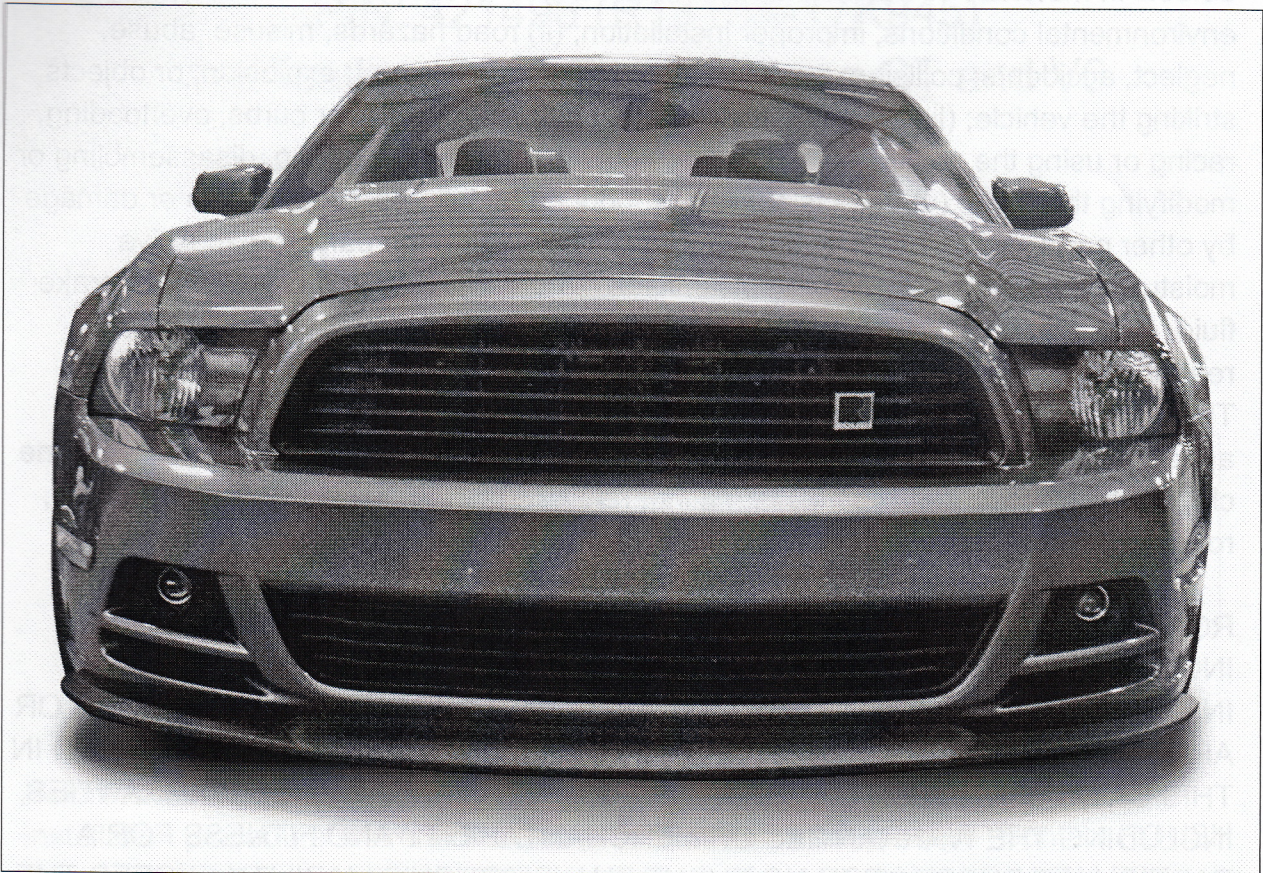


- To install the lower valance panel, reverse the removal procedure.

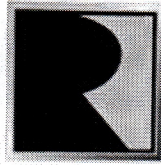


ROUSH[®]
P E R F O R M A N C E

Congratulations!!! You have completed the installation of your new ROUSH Performance Products 2013 Mustang Lower Grille Kit.



PRICE PAID BY CUSTOMER FOR PRODUCTS SOLD REGARDLESS IF
ROUSH HAS BEEN ADVISED IN ADVANCE OF ANY POTENTIAL PROBLEM OR IF A
CLAIM IS BASED ON CONTRACT, TORT, STRICT LIABILITY, PRODUCT LIABILITY
OR OTHERWISE. SOME STATES DO NOT ALLOW THE EXCLUSION OR
LIMITATION OF IMPLIED WARRANTIES OR THEIR DURATION, OR LIABILITY FOR
INCIDENTAL OR CONSEQUENTIAL DAMAGES, SO THE ABOVE EXCLUSIONS OR
LIMITATIONS MAY NOT APPLY.



ROUSH[®]
P E R F O R M A N C E

WARRANTY

All retail parts carry a 90-day warranty from the date of purchase. This warranty covers defects in materials or workmanship, and does not include (i) normal wear and tear, environmental conditions, improper installation; (ii) road hazards, misuse, abuse, neglect, accidents, collision, fire, theft, freezing, vandalism, riot, explosion, or objects striking the vehicle; (iii) misusing the vehicle, such as driving over curbs, overloading, racing or using the vehicle as a stationary power source; (iv) altering, disassembling or modifying the parts; (v) defects caused or induced by failures, breakdowns or damage by other parts, components or the vehicle; (vi) subjecting the parts to excessive moisture or water or any motor vehicle fluids (e.g.: oil, anti-freeze, battery acid, brake fluid, etc.); (vii) acts of God, natural disasters and other similar causes beyond the reasonable control of ROUSH; or (viii) application of chemicals that affect the parts. This Limited Warranty does not cover surface deterioration of paint, trim and appearance items that result from use and/or exposure to the elements, such as stone chips, scratches, bird droppings, lightning, hail, windstorm, dings, dents, earthquake, road salt, tree sap, water or flood.

ROUSH SHALL NOT BE LIABLE TO REIMBURSE CUSTOMER/DEALER FOR INCIDENTAL OR CONSEQUENTIAL DAMAGES RESULTING FROM THE INSTALLATION OR USE OF ANY PRODUCT SOLD THROUGH THIS CATALOG OR ARISING OUT OF ANY BREACH OF WARRANTY. EXCEPT AS MAY BE STATED IN THIS CATALOG, ROUSH DISCLAIMS ALL EXPRESS AND IMPLIED WARRANTIES, INCLUDING THE WARRANTIES OF MERCHANTABILITY AND FITNESS FOR A PARTICULAR PURPOSE. IN NO EVENT SHALL ROUSH'S LIABILITY EXCEED THE PRICE PAID BY CUSTOMER/DEALER FOR PRODUCTS SOLD REGARDLESS IF ROUSH HAS BEEN ADVISED IN ADVANCE OF ANY POTENTIAL PROBLEM OR IF A CLAIM IS BASED ON CONTRACT, TORT, STRICT LIABILITY, PRODUCT LIABILITY OR OTHERWISE. SOME STATES DO NOT ALLOW THE EXCLUSION OR LIMITATION OF IMPLIED WARRANTIES OR THEIR DURATION, OR LIABILITY FOR INCIDENTAL OR CONSEQUENTIAL DAMAGES, SO THE ABOVE EXCLUSIONS OR LIMITATIONS MAY NOT APPLY.