



2013 Mustang L & R Rear Splitter

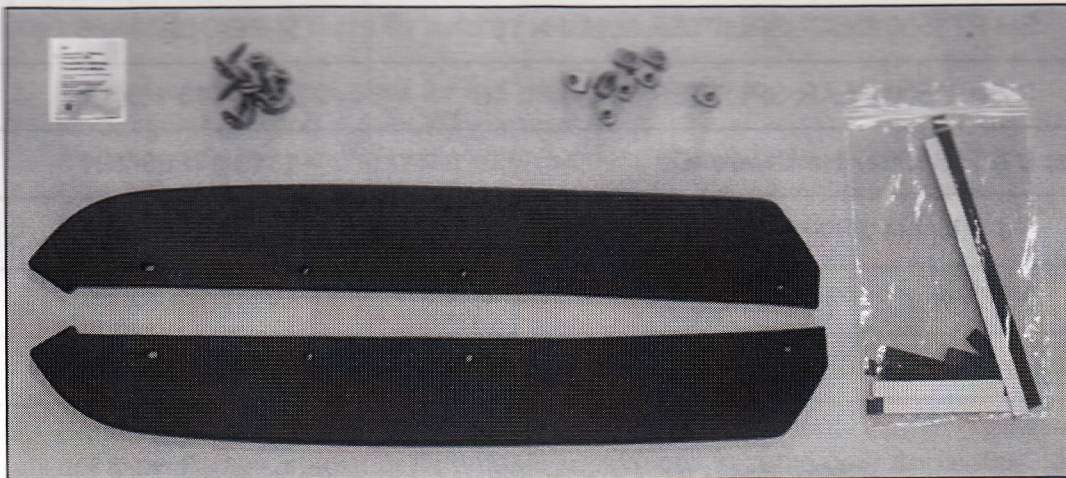
P/N: 421405 (R1313-17F954-AA)

Application: 2013 Ford Mustang

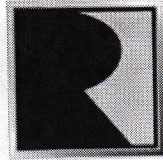
2013 Mustang 5.0L with Automatic/Manual Transmission

2013 Mustang 3.7L with Automatic/Manual Transmission

Installation Instructions



Before installing your ROUSH Performance Product(s), read through the entire installation procedure and check to make sure all items are present. Contact ROUSH Customer Service at 1-800-59-ROUSH, weekdays from 9:00 AM to 5:00 PM EST, with any questions regarding fit, missing parts or instructions that are unclear to you.



ROUSH
P E R F O R M A N C E

Description	Part Number	Qty
2013 Mustang Rear Side Splitter Kit	R1313-17F954	1
Splitter, LH Side Rear	1313-17F954L	1
Splitter, RH Side Rear	1313-17F954R	4
Rear Side Splitter Template	1313-17F954TMPL	1
Rear Side Splitter Installation Manual	1313-17F954IM	1
Rear Side Splitter Tape Kit	1313-17F954TAPE	1
3M PT1500 REAR SPLITTER 44MM X 10	TAPE-015-10X44	2
3M PT1500 REAR SPLITTER 86MM X 10	TAPE-015-10X86	4
3M PT1500 REAR SPLITTER 188MM X 10	TAPE-015-10X188	2
Rear L & R Splitter Hardware Kit	1313-17F954HK	1
J-Clip, M4.2	W704823-S439	8
Screw, 4.2 X 19 PC PZ	W715060-S439	8
Adhesion Promoter	021200-27571	1

EQUIPMENT AND SUPPLIES REQUIRED

- Electric or Pneumatic Drill
- Drill Bit Sizes: 1/8" & 1/4"
- 7MM Metric Socket (Deep Recommended)
- Isopropyl Alcohol and Terry Cloth
- Safety Glasses
- Ratchet
- Torque Wrench



ROUSH
PERFORMANCE

LIMIT OF LIABILITY STATEMENT

The information contained in this publication was accurate and in effect at the time the publication was approved for printing and is subject to change without notice or liability. ROUSH Performance Products (RPP) reserves the right to revise the information presented herein or to discontinue the production of parts described at any time.

SAFETY REQUIREMENTS

STOP! READ IMPORTANT SAFETY CAUTIONS AND WARNINGS BEFORE PROCEEDING.

IMPORTANT SAFETY NOTICE

Appropriate disassembly, assembly methods and procedures are essential to ensure the personal safety of the individual performing the kit installation. Improper installation due to the failure to correctly follow these instructions could cause personal injury or death. Read each step of the installation manual carefully before starting the actual installation.

1. Always wear safety glasses for eye protection.
2. Place ignition switch in the OFF position.
3. Always apply the parking brake when working on a vehicle.
4. Chock the front and rear tires to prevent unexpected vehicle movement.
5. If working without a lift, always consult vehicle manual for correct lifting specifications.
6. Operate the engine only in well-ventilated areas to avoid exposure to carbon monoxide.
7. Do not smoke or use flammable items near or around the fuel system.
8. Use chemicals and cleaners in well-ventilated areas.
9. Batteries produce explosive gases, which can cause personal injury. Therefore, do not allow flames, sparks or flammable substances to come near the battery.
10. Keep hands and any other objects away from the radiator fan blades.
11. Keep yourself and your clothing away from moving parts when the engine is running.
12. Do not wear loose clothing or jewelry that can get caught in rotating parts or scratch surface finishes.
13. Allow the engine, cooling system, brakes and exhaust to cool before working on a vehicle.

WORK SAFELY!

Perform this installation on a good clean level surface for maximum safety and with the engine turned off.



ROUSH®
P E R F O R M A N C E

SECTION A – Modification

The following section will guide you through the modification of the factory rear bumper for installation of the rear splitters.

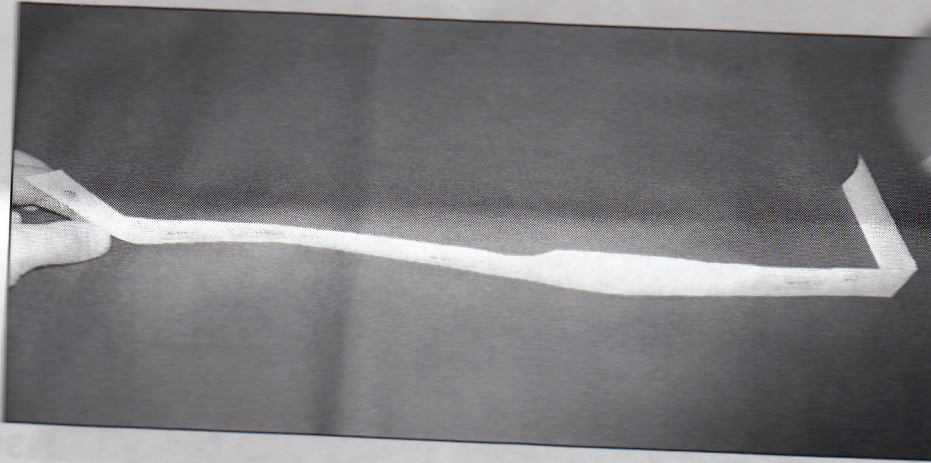
1. Following proper automotive industry safety standards, lift the vehicle on a vehicle hoist or hydraulic jack to gain access to the underside of the rear bumper.



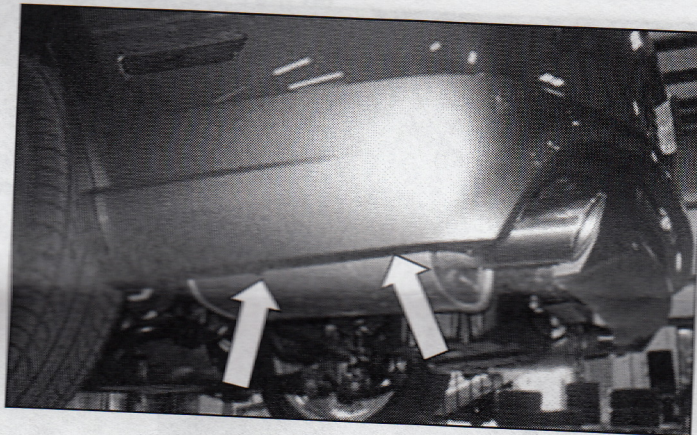


ROUSH
PERFORMANCE

2. Following the dashed line cut out the rear splitter template (1313-17F954TMPL). Fold the template at the line marked "Fold" for wheel well transition reference.



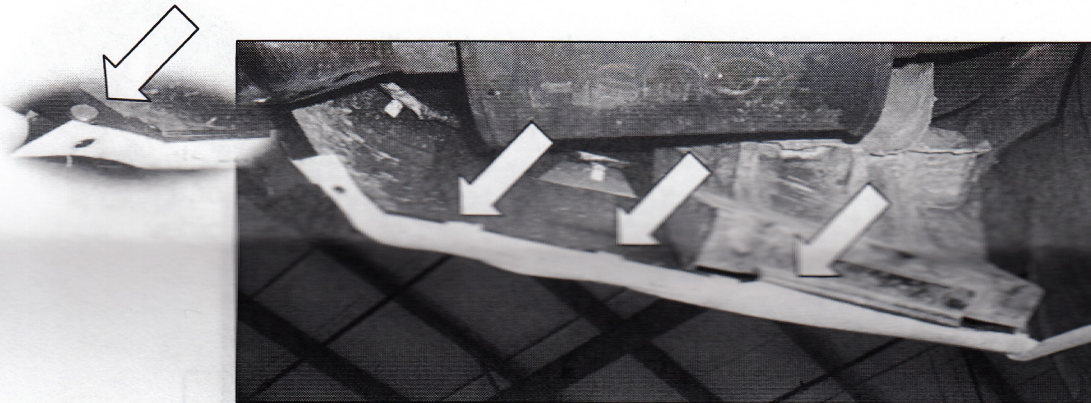
3. Position the template onto the underside of the left hand side (driver side) rear bumper.



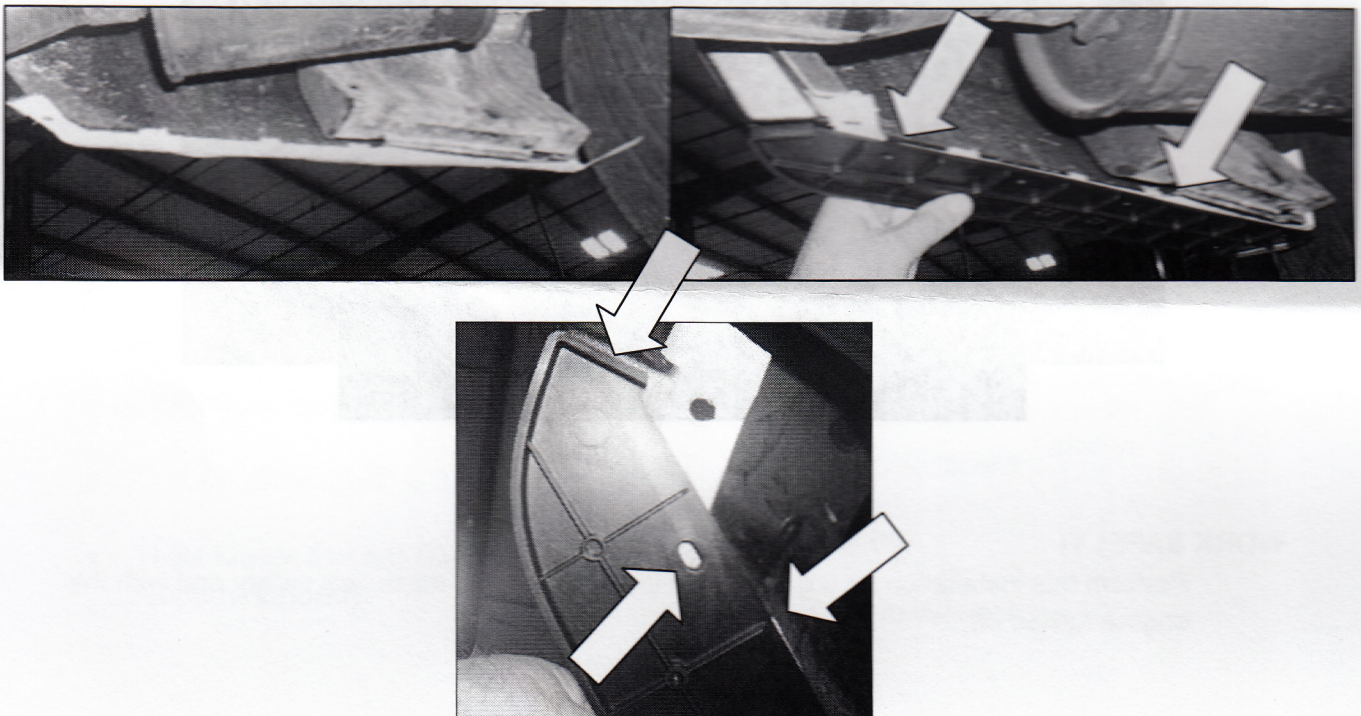


ROUSH
P E R F O R M A N C E

4. Align the rear most hole for proper positioning. Align the edges of the template with the inside edges of the fascia



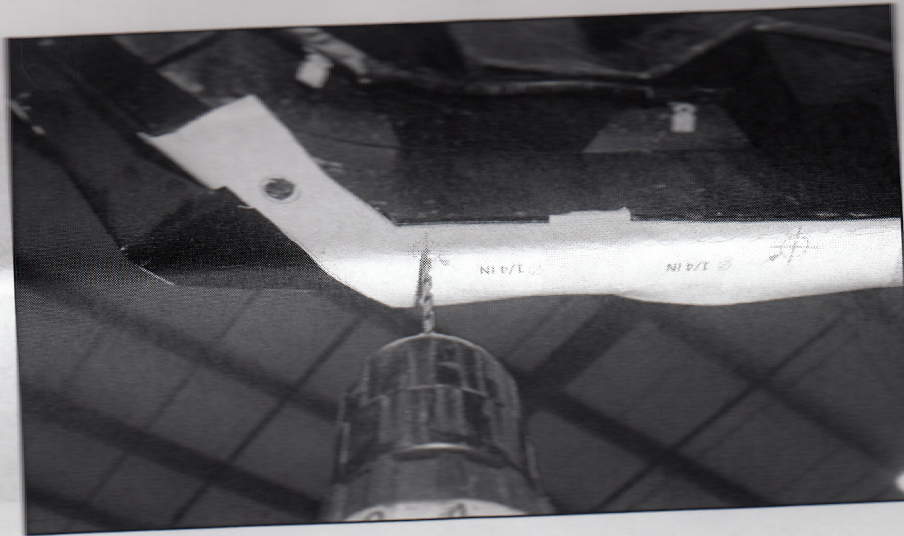
5. Tape template in place. Hold the left hand (driver side) rear splitter (1313-17F954L) in place and align the holes with the template marks to check fitment before drilling. If the edges are not aligned as illustrated with arrows below, remove and readjust the template.



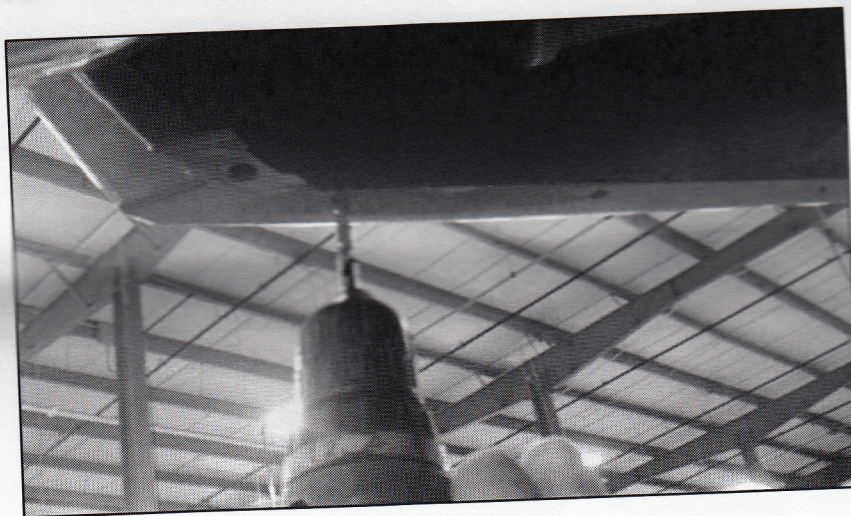


ROUSH
PERFORMANCE

6. Once the splitter template is aligned properly, drill four (4) 1/8" pilot holes into the center marks shown on the template.



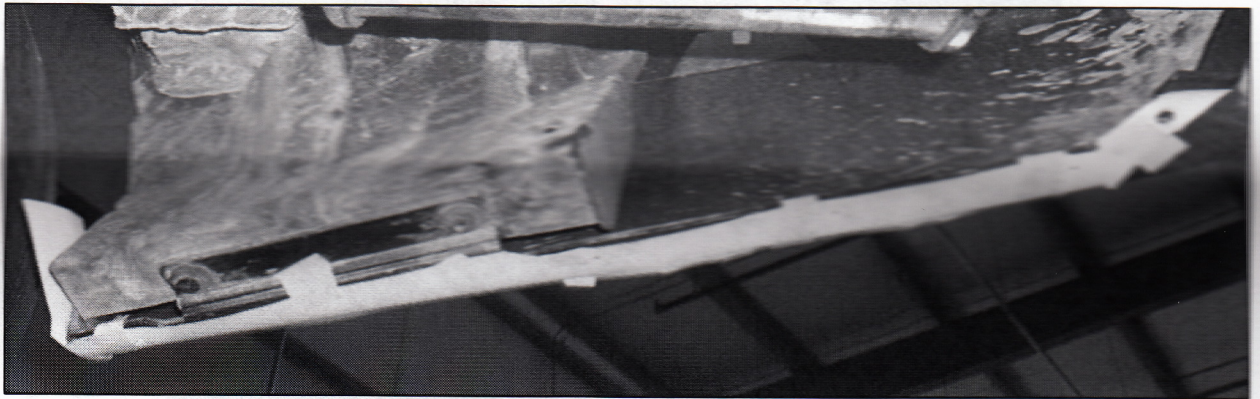
7. Carefully remove template and fold the tape over the template edge. Template will be reused for the right hand side (passenger side). Drill the four (4) pilot holes open with a size 1/4" drill bit.





ROUSH®
P E R F O R M A N C E

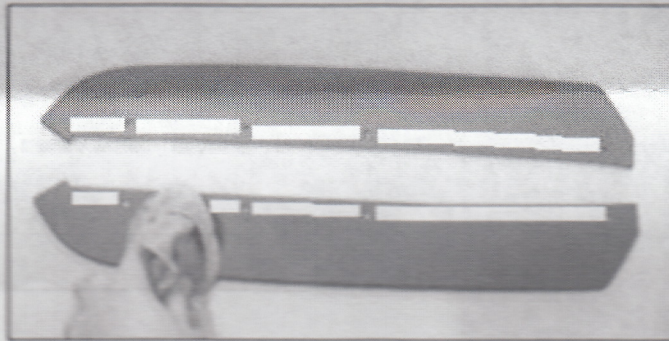
8. Install template onto right hand (passenger side) with printed side up. Repeat steps 3 through 6 for the right hand (passenger side) using the previously drilled template holes for the 1/8" pilot holes.





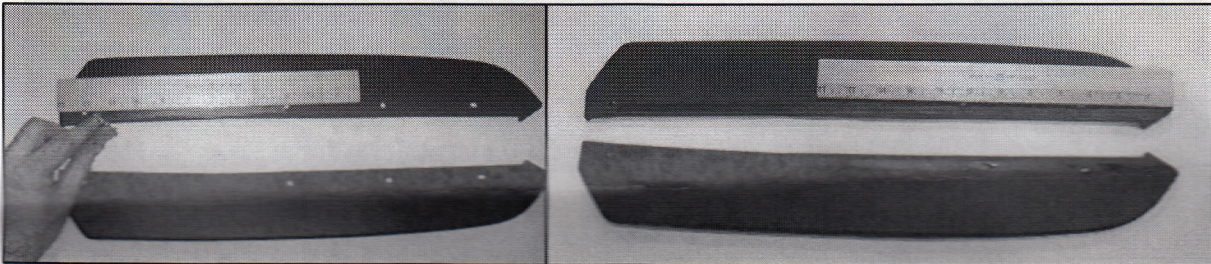
SECTION B – Tape Installation

1. With household isopropyl alcohol, clean the left and right rear splitters (1313-17F954L, 1313-17F954R) in the area illustrated in white below.



2. Install the four (4) J-clip fasteners (W704323-6419) into the 1/4" drilled holes.

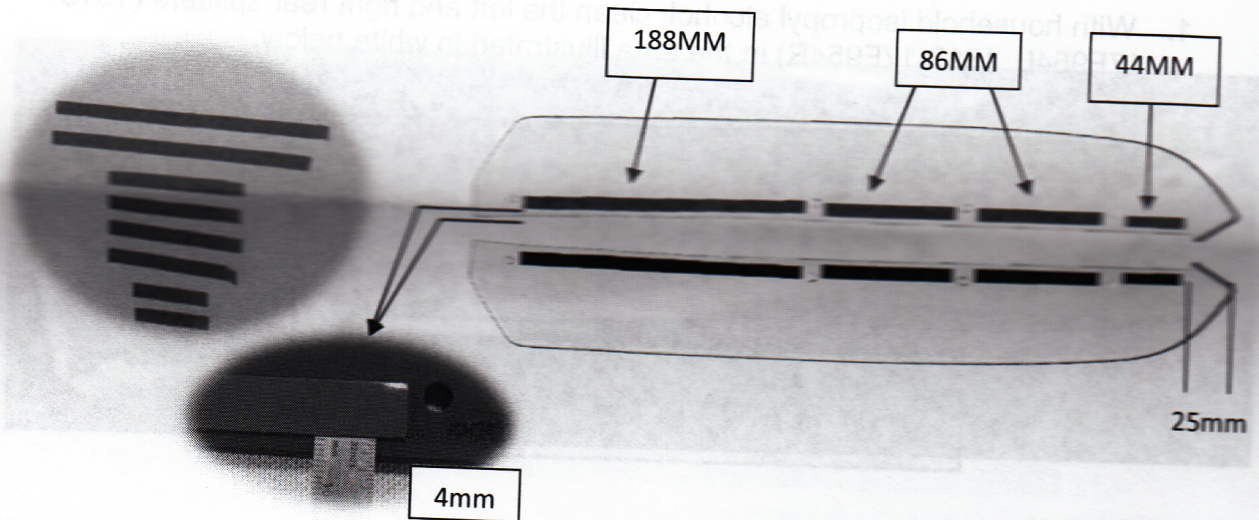
2. Align a straightedge to the center of the four (4) holes to use as a guide while applying the adhesion promoter (021200-27571), as shown below. **DO NOT APPLY BEYOND** the holes or the adhesion promoter will be visible once installed.





ROUSH
P E R F O R M A N C E

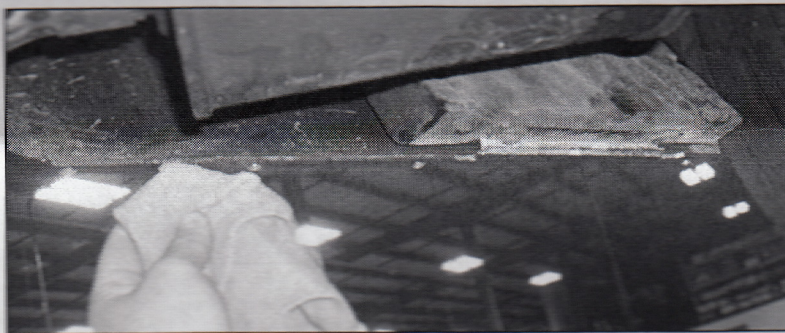
3. Remove the white backing from the tape pieces; install the tape 4mm from the edge. Install the 44mm tape piece 25mm from the pointed tip as shown in the image below.



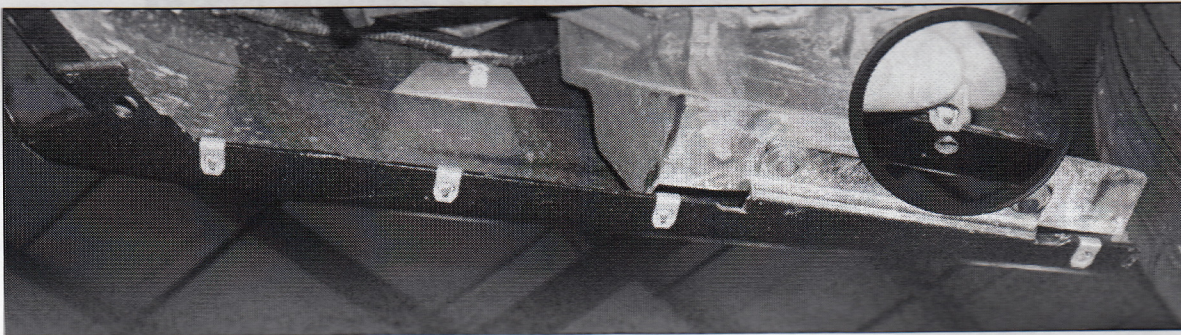


SECTION C – Installation

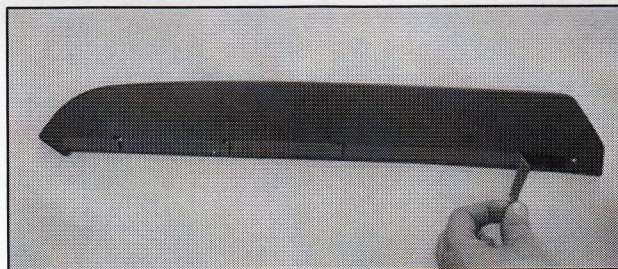
1. With household isopropyl alcohol and a clean terry cloth, clean the bumper installation surfaces.

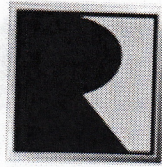


2. Install the four (4) J-clip fasteners (W704823-S439) into the 1/4" drilled holes.



3. Remove the red film to install the rear splitters.



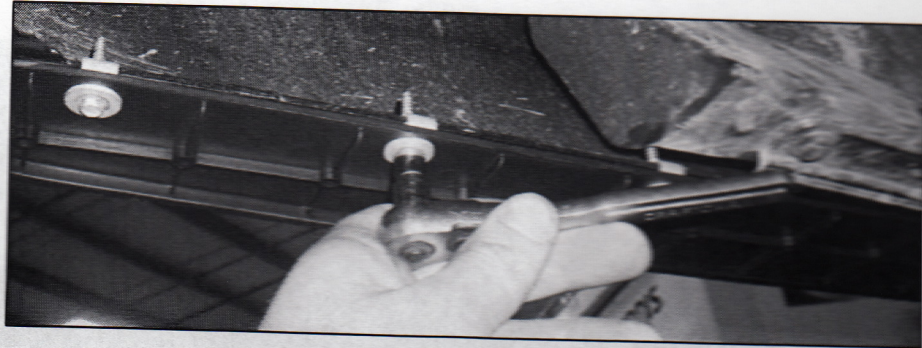


ROUSH®
P E R F O R M A N C E

4. Position the left hand (driver side) rear splitter mounting holes in alignment with the J-clips. Loosely install the front and rear screws (W715060-S439) to aid in installation.



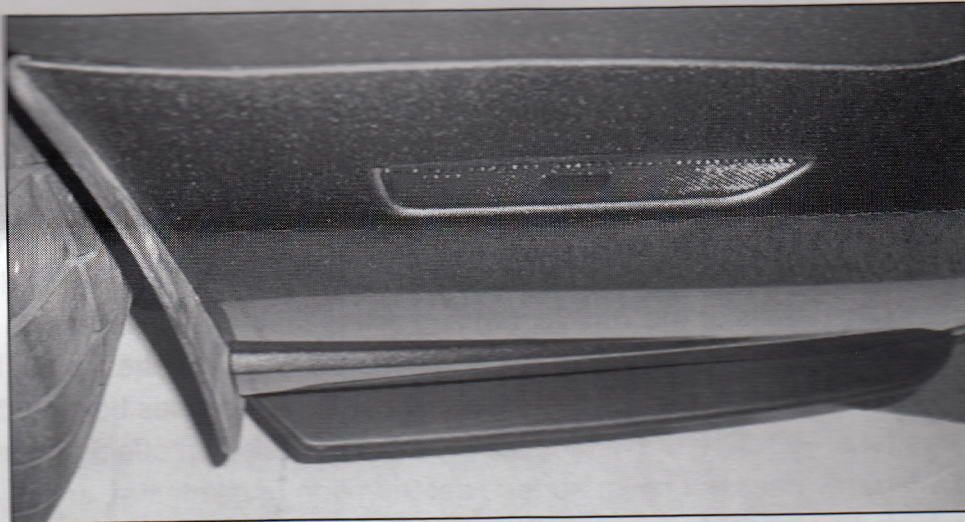
5. Tighten the four (4) screws. Torque the screws to 3NM (26 LB-IN). Repeat steps 2 through 5 for the right hand (passenger side) splitter.





ROUSH
PERFORMANCE

Congratulations!!!! You have completed the installation of your new ROUSH Performance Products, 2013 Mustang Rear Splitters.



PROPERTY OF ROUSH PERFORMANCE, INC. ALL RIGHTS RESERVED. THIS DOCUMENT IS THE PROPERTY OF ROUSH PERFORMANCE, INC. AND IS NOT TO BE REPRODUCED OR TRANSMITTED IN ANY FORM OR BY ANY MEANS, ELECTRONIC OR MECHANICAL, INCLUDING PHOTOCOPYING, RECORDING, OR BY ANY INFORMATION STORAGE AND RETRIEVAL SYSTEM, WITHOUT THE WRITTEN PERMISSION OF ROUSH PERFORMANCE, INC. THE INFORMATION CONTAINED HEREIN IS FOR INFORMATIONAL PURPOSES ONLY AND DOES NOT CONSTITUTE AN OFFER OF ANY FINANCIAL PRODUCT OR SERVICE. ROUSH PERFORMANCE, INC. IS NOT A FINANCIAL INSTITUTION AND DOES NOT PROVIDE FINANCIAL ADVICE. PLEASE CONSULT YOUR FINANCIAL ADVISOR FOR MORE INFORMATION. THIS DOCUMENT IS NOT INTENDED TO BE USED AS A SUBSTITUTE FOR PROFESSIONAL ADVICE. ROUSH PERFORMANCE, INC. IS NOT RESPONSIBLE FOR ANY DAMAGES, INCLUDING INCIDENTAL OR CONSEQUENTIAL DAMAGES, SO THE ABOVE EXCLUSIONS OR LIMITATIONS MAY NOT APPLY.



ROUSH[®]
P E R F O R M A N C E

WARRANTY

All retail parts carry a 90-day warranty from the date of purchase. This warranty covers defects in materials or workmanship, and does not include (i) normal wear and tear, environmental conditions, improper installation; (ii) road hazards, misuse, abuse, neglect, accidents, collision, fire, theft, freezing, vandalism, riot, explosion, or objects striking the vehicle; (iii) misusing the vehicle, such as driving over curbs, overloading, racing, or using the vehicle as a stationary power source; (iv) altering, disassembling or modifying the parts; (v) defects caused or induced by failures, breakdowns, or damage by other parts, components or the vehicle; (vi) subjecting the parts to excessive moisture or water or any motor vehicle fluids (e.g.: oil, anti-freeze, battery acid, brake fluid, etc.); (vii) acts of God, natural disasters and other similar causes beyond the reasonable control of ROUSH; or (viii) application of chemicals that affect the parts. This Limited Warranty does not cover surface deterioration of paint, trim, and appearance items that result from use and/or exposure to the elements, such as stone chips, scratches, bird droppings, lightning, hail, windstorm, dings, dents, earthquake, road salt, tree sap, water or flood.

ROUSH SHALL NOT BE LIABLE TO REIMBURSE CUSTOMER/DEALER FOR INCIDENTAL OR CONSEQUENTIAL DAMAGES RESULTING FROM THE INSTALLATION OR USE OF ANY PRODUCT SOLD THROUGH THIS CATALOG OR ARISING OUT OF ANY BREACH OF WARRANTY. EXCEPT AS MAY BE STATED IN THIS CATALOG, ROUSH DISCLAIMS ALL EXPRESS AND IMPLIED WARRANTIES, INCLUDING THE WARRANTIES OF MERCHANTABILITY AND FITNESS FOR A PARTICULAR PURPOSE. IN NO EVENT SHALL ROUSH'S LIABILITY EXCEED THE PRICE PAID BY CUSTOMER/DEALER FOR PRODUCTS SOLD REGARDLESS IF ROUSH HAS BEEN ADVISED IN ADVANCE OF ANY POTENTIAL PROBLEM OR IF A CLAIM IS BASED ON CONTRACT, TORT, STRICT LIABILITY, PRODUCT LIABILITY OR OTHERWISE. SOME STATES DO NOT ALLOW THE EXCLUSION OR LIMITATION OF IMPLIED WARRANTIES OR THEIR DURATION, OR LIABILITY FOR INCIDENTAL OR CONSEQUENTIAL DAMAGES, SO THE ABOVE EXCLUSIONS OR LIMITATIONS MAY NOT APPLY.