

## Lucas Oil Octane Booster Additive

**Installation Time:** Five minutes

**Difficulty Level:** Easy.

**Tools:** Tuner (Optional)



**Note:** It's best to add this additive when your fuel level is 1/8 to 1/4 fuel level which will allow you to mix the product more effectively.

### Installation Instructions:

1. Open fuel door and remove gas cap.



2. Pour entire bottle of Lucas Octane Booster additive in to tank.



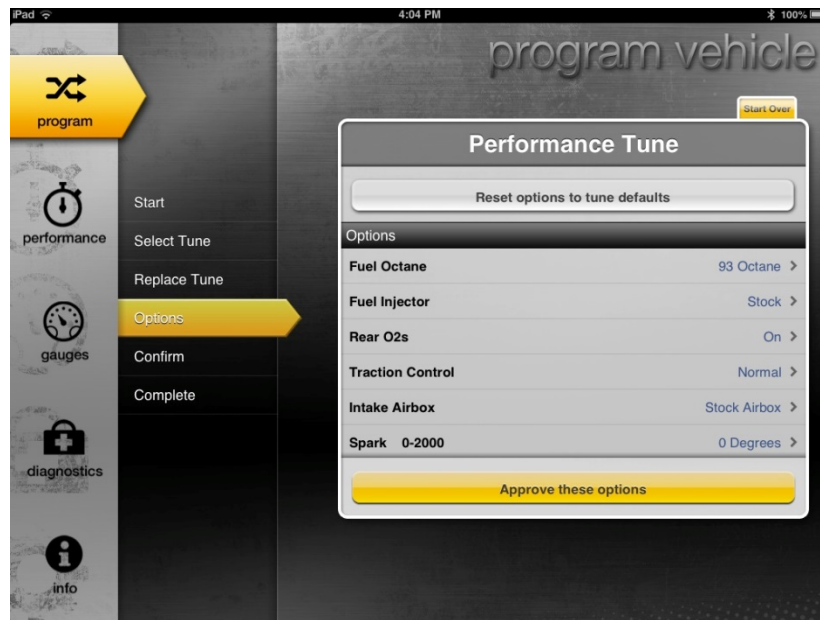
3. Select grade of gasoline



4. Insert fuel nozzle and pump until tank is full.



5. Remove fuel nozzle and replace gas cap, tighten until clicks.
6. Take note of vehicle mileage to calculate MPG if desired.
7. **Tuning Optional:** If change your vehicle to a higher octane for tuning and advance timing. Ensure you've selected the correct fuel octane using your tuner and save to vehicle. *Always match your fuel octane to what the tune requires.*



8. Start vehicle and allow running for a couple minutes and proceed to drive.

**Installation Instructions Written By AmericanMuscle Customer Ryan Maguire 10/14/2014**