

Replace interior door handle (2010-2014 Mustang; all models)

Necessary Time:

Approximately 30 minutes per door

Tools needed:

- 8mm socket and driver
- Torx T-30 bit and driver
- Small flathead screwdriver

Optional:

- Interior trim removal tool (plastic)



Notes before beginning:

1. All hardware on the door panel is hand tight from the factory. *Do not over-torque.*
2. Always interrupt the electrical circuit in your Mustang by disconnecting the negative battery cable before working with its electrical components.

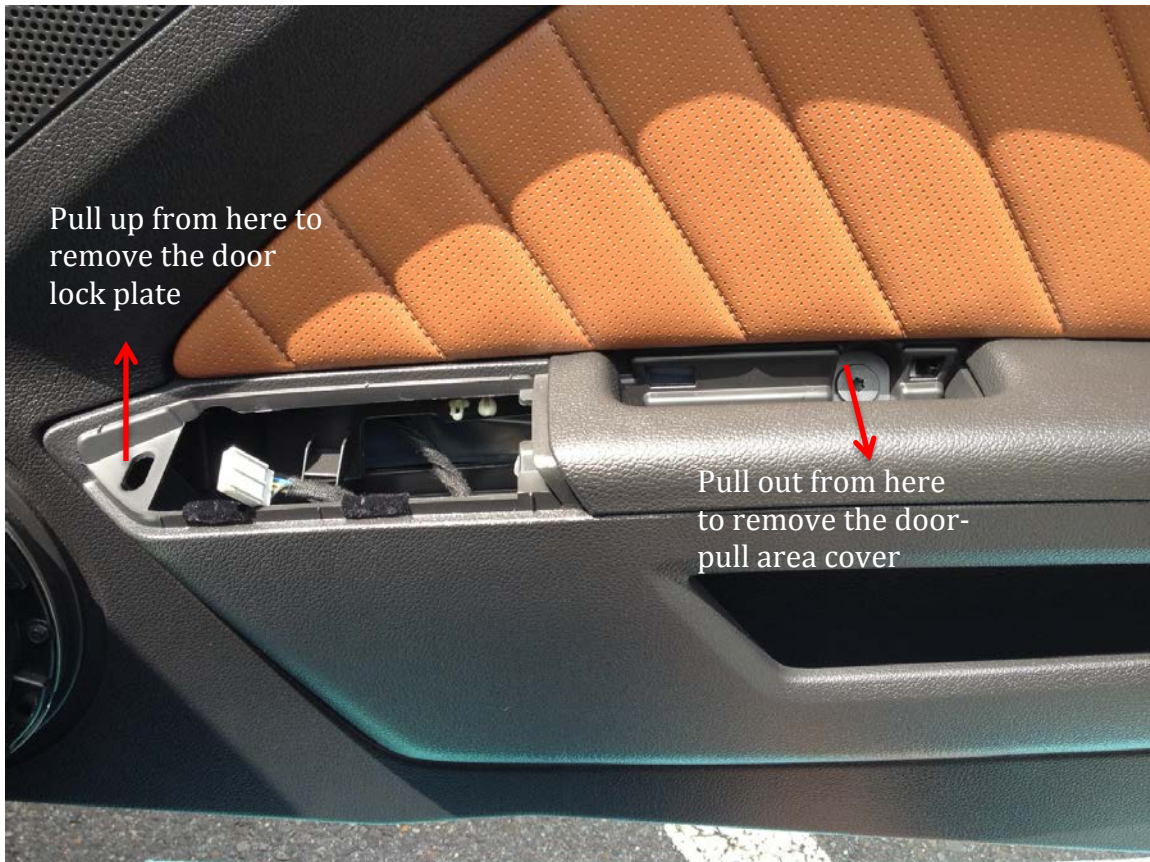
Door panel disassembly:

1. Remove the small panel behind the stock handle with a flat blade screwdriver by lifting gently from the hinge-side. Then, remove the T-30 Torx screw behind it.



2. Remove the cover from the back of the armrest-area door pull. Use your small flathead screwdriver or trim panel removal tool to pry it forward approximately $\frac{1}{4}$ inch away from the door panel, then lift it straight up, to release it. Remove the T-30 Torx screw behind it.

Replace interior door handle (2010-2014 Mustang; all models)



3. Remove the window control and door lock assembly by pulling straight up on the front approximately 1 ½ inches. It has a clip on the front edge and a plastic tab on the rear edge. Remove the two connectors from the switches on the door lock assembly.
4. Remove the door lock bezel by using your small flathead screwdriver to pry upwards, gently.



Replace interior door handle (2010-2014 Mustang; all models)

5. Using a socket and wrench, remove the *seven* 8mm bolts on the outer edge of the door panel **and the one in the window switch area.**



6. Remove the plastic cover next to the side mirror using gentle outward pressure. It is held in place by two clips. Disconnect the power mirror connector (driver side only).



7. Remove the door panel by lifting up on the armrest handle. Remove any remaining electrical connections (woofer connection, if applicable).

Replace interior door handle (2010-2014 Mustang; all models)

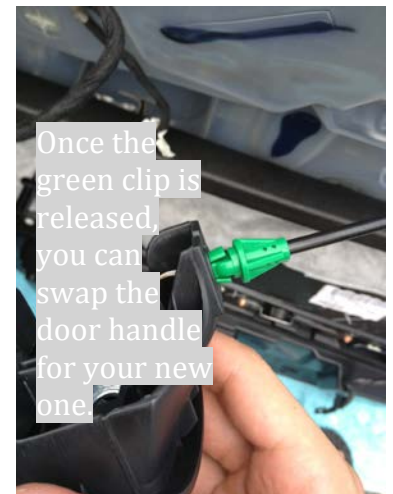
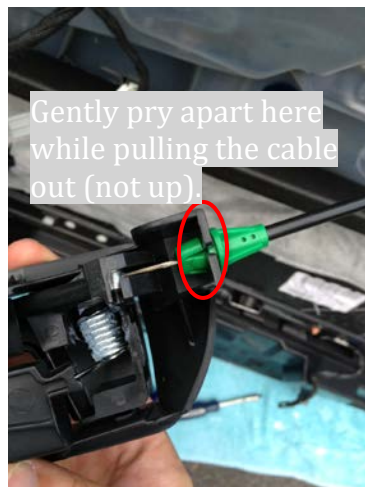
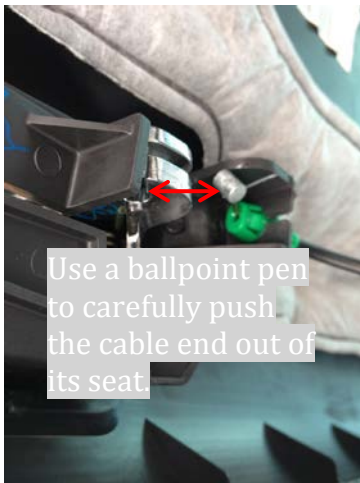
Door handle replacement:

8. In order to remove the door release cable, you will need to remove the door handle assembly. Use your small flathead screwdriver to pry away the faceplate and/or push from the back of the assembly. There are retaining tabs along the edges of the assembly. **You will need to use a significant amount of force to remove it.**

Tip: Looking at the back of the door handle assembly will give you a good idea where to apply the pushing force. In addition, you may want use your small flathead screwdriver to pry from the backside of the panel to minimize scratching or marring.

9. To remove the door handle release cable, use a small amount of pressure with your small flathead screwdriver to move the door cable off the door handle.

Note: If you stretch or break the cable, there is no adjustment; it will have to be replaced.



Door panel reassembly:

10. Follow the procedures in reverse to reinstall the door handle into the door panel and the door panel onto the door.

Remember:

- Be sure to feed the window switches through the door panel before bolting it back on.
- Remember to re-attach and check all electrical connections before bolting the panel on.
- Remember to reattach the battery cable

Pro tips:

- Thoroughly clean the disassembled parts while they are easily accessible.
- Check the vapor barrier on your door for leaks/seal issues while the door is disassembled!