

Replacement of 1987-93 Ford Mustang Power Window Switches



American Muscle Item # 95733

Tools Required:

- #2 Phillips Screwdriver

Optional Tools:

- Dielectric Grease
- Large Wood or Sheet Metal Screw

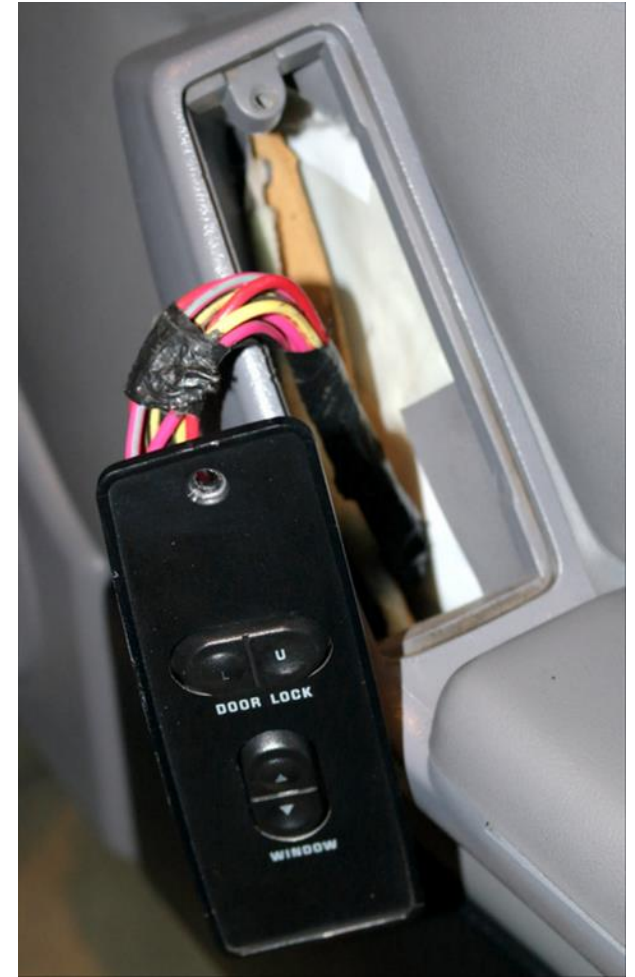
Power Door Lock Switch Replacement

Note: This procedure highlights replacing the passenger side power window switch but the process is the same for both the car doors.

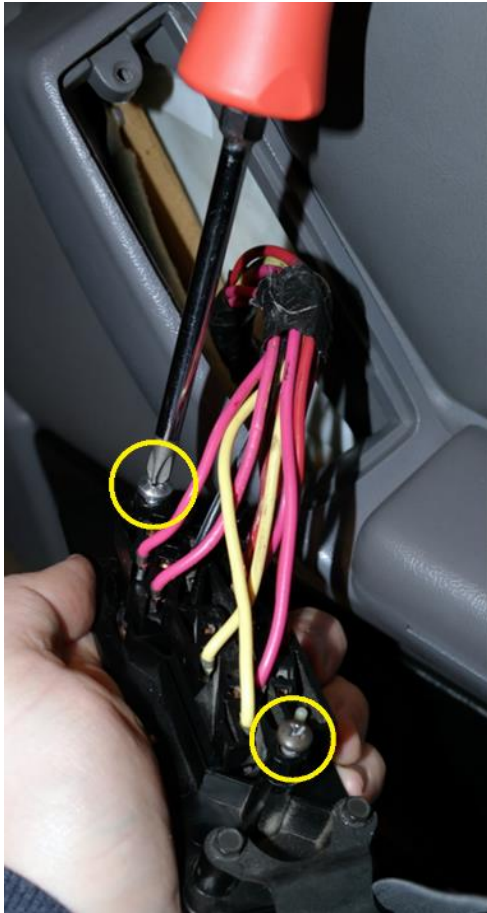
1. To prevent accidental arcs or melted wires, disconnect the power cable from the negative terminal of the car battery
2. Open the passenger door and remove the screw located just above the power door lock and power window switches



3. To easily pull the faceplate up, use an oversized wood or metal screw, hand start the screw into the switch face plate screw hole going in about 1-2 threads, then gently pull on the screw to pull out the switch plate



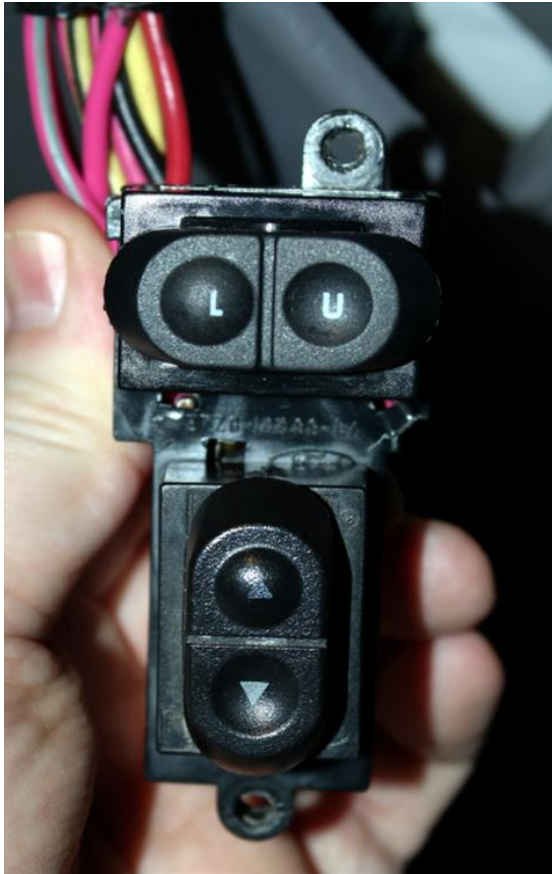
4. Pull out the switch plate and roll it over to expose the two screws (highlighted below) on the back side holding the switches in place. Remove the two screws and gently pull the switch plate away from the face plate



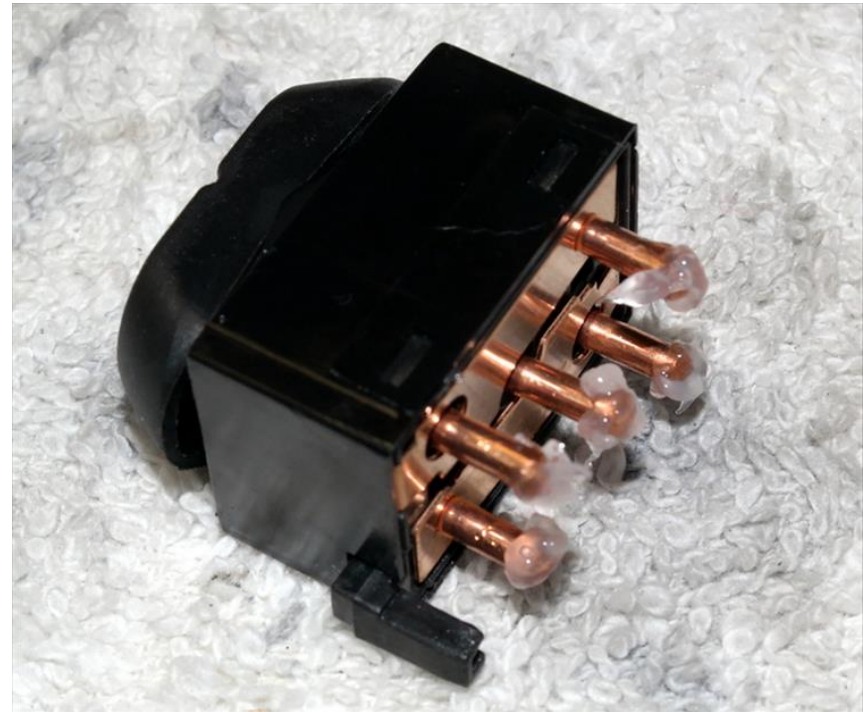
5.



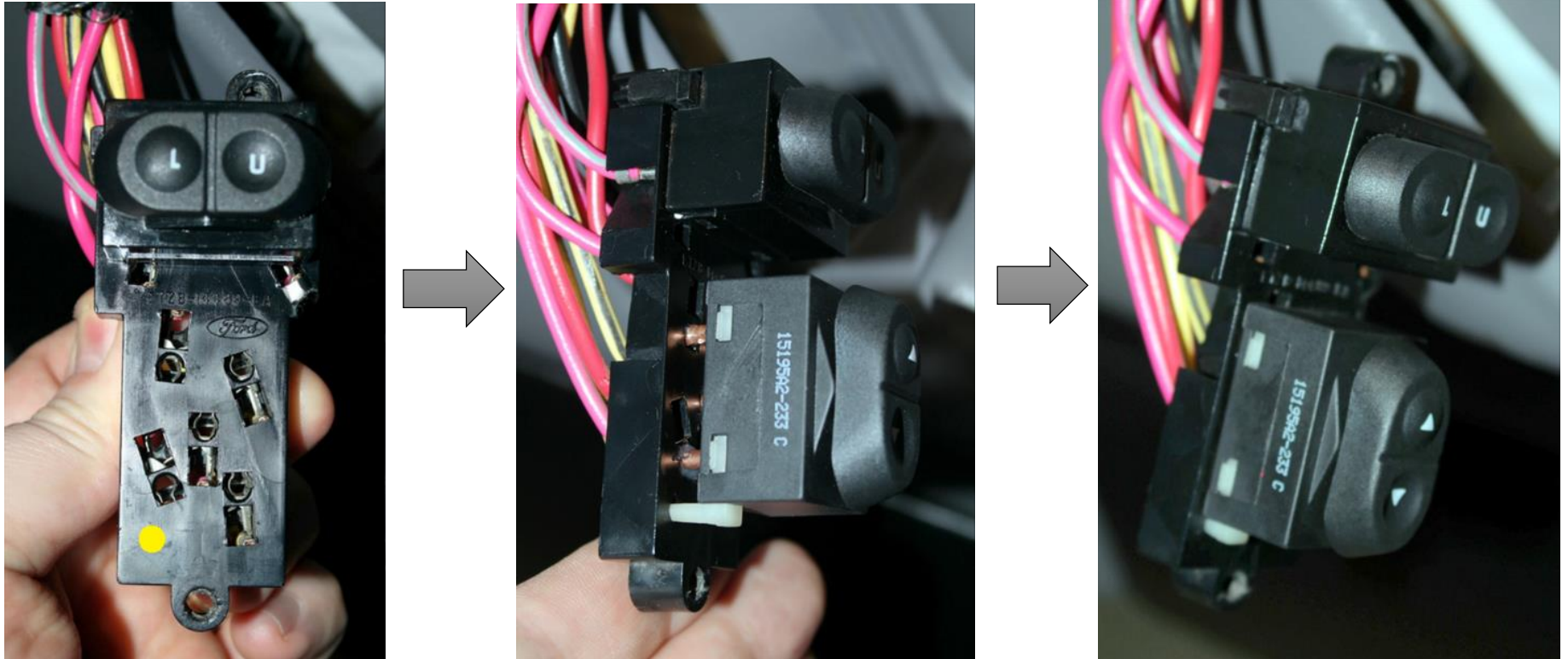
6. On the switch plate gently pull the window switch out of the plate by gently pulling while rocking the switch back and forth until it pulls out



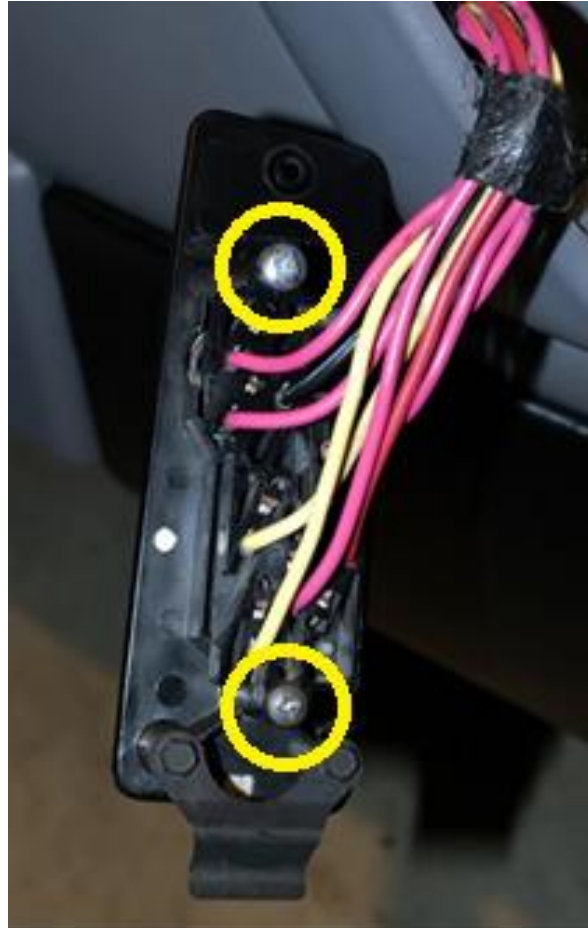
7. Optional: After removing the old switch, place dielectric grease on the terminals of the new switch. This grease can prevent moisture and corrosion build up from occurring.



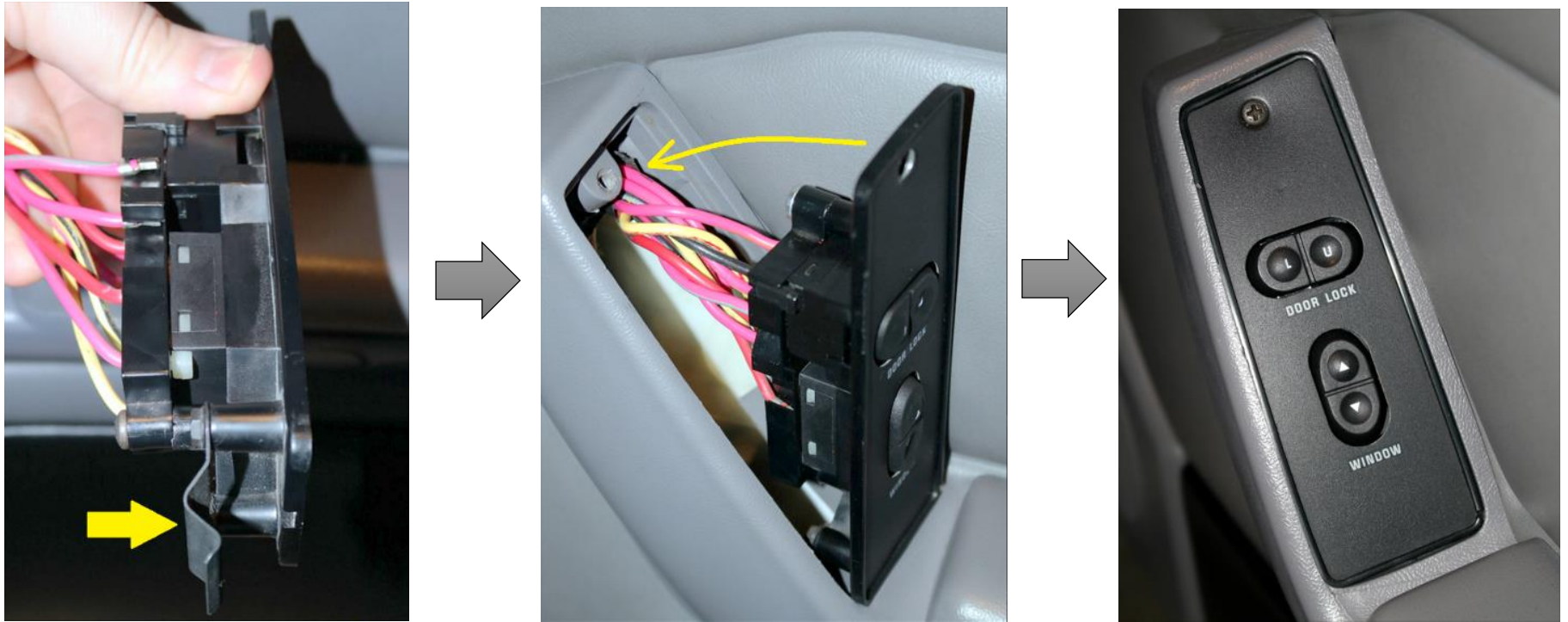
8. Press the new switch fully into the switch plate so that the switch is pressed fully against the switch plate. The switch is keyed and it cannot be put in incorrectly. The first picture below highlights the keyhole in yellow. The second picture below shows the white key fitting into the keyhole.



9. Install the switch plate back into the face plate, reinstalling the two screws that hold the entire assembly together.



10. Reinstall the switch assembly back into the door armrest by first installing the spring plate at the bottom of the switch assembly into the armrest hole, then tilting the top of the switch assembly back and installing the switch assembly screw.



11. To finish the job and test the switch, reinstall the negative terminal wire to the battery.