

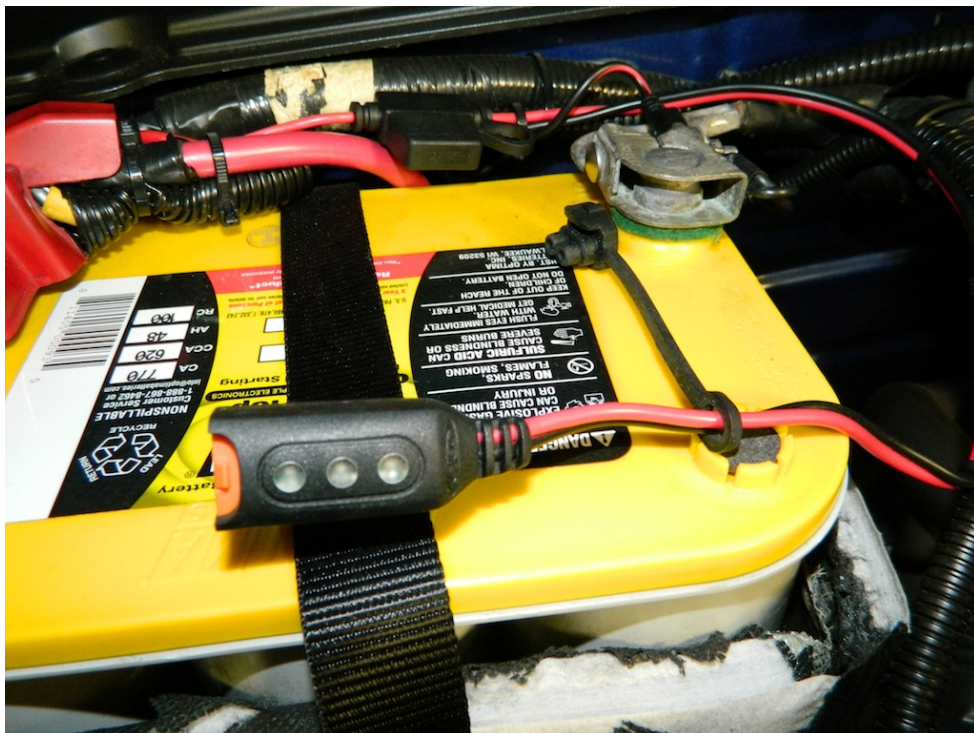
# CTEK Battery Charger Auxiliary Connector Installation Guide

## Installation Instructions:

1. Open hood and locate CTEK battery terminal.



2. Remove rubber protective boot from CTEK connector inlet.

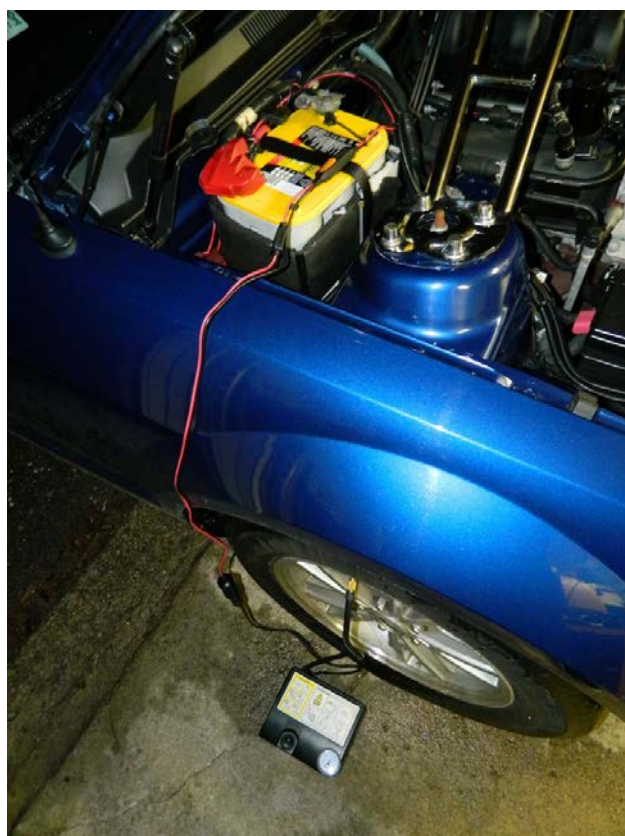


3. Proceed to connect CTEK auxiliary cable.





4. Attach 12 volt accessory to CTEK auxiliary connector.



Installation Instructions Written By AmericanMuscle Customer Ryan Maguire 1/6/2014