

## Installation Instructions for Roush Performance Exhaust System - Side Exit (10-14 3.5L EcoBoost, 5.0L, 6.2L)

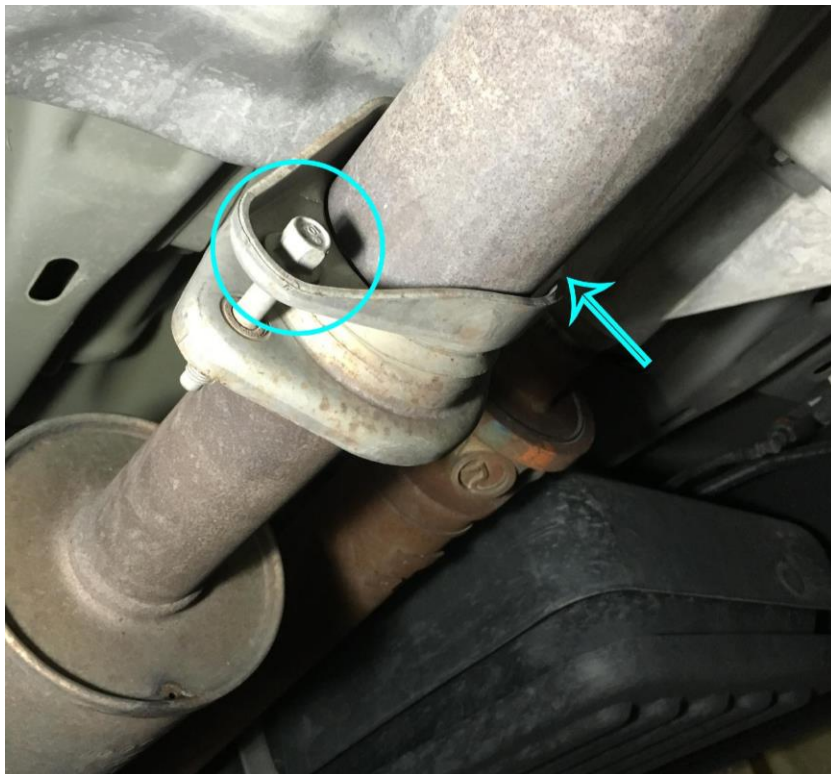
**Installation Time:** 1 hour 45 Minutes

**Tools Required:**

- ✓ Ratchet
- ✓ Screw Driver
- ✓ Metal Cutting Device
- ✓ Extension
- ✓ 13mm, 15mm, 18mm Socket

**Installation Instructions:**

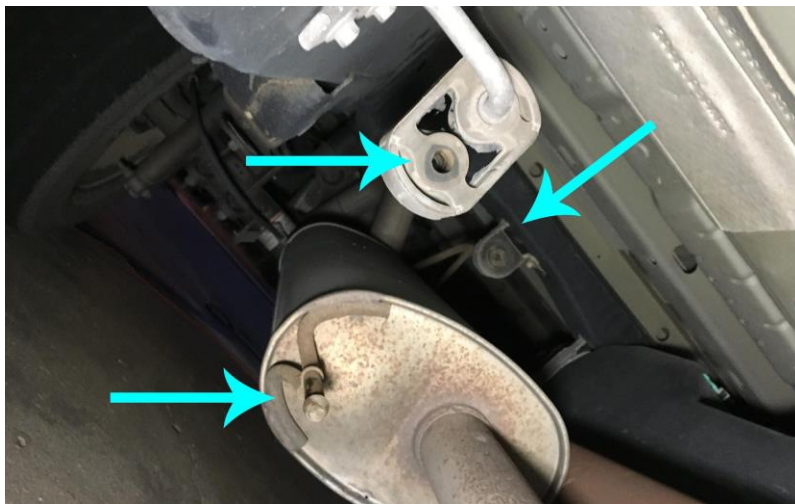
1. Remove bolts bolting collector to engine Y-Pipe (2 13mm Bolts)



2. Remove Bolt clamping pipe over rear end to Muffler (15mm Bolt)



3. Remove Bolt clamping pipe over rear end to Muffler (15mm Bolt)
4. . Disconnect the pipe from collector and remove collector portion of pipe. (Keep bolts) (May need to pry with screwdriver due to rusting to clamp)
5. Remove Exhaust from rubber hangers and remove factory exhaust by pulling exhaust out towards the front of pickup.



6. Picture of Hangers without Muffler.



7. Bolt new collector to factory Y-pipe (2x13mm Bolts)



8. Place new Muffler in hangers.

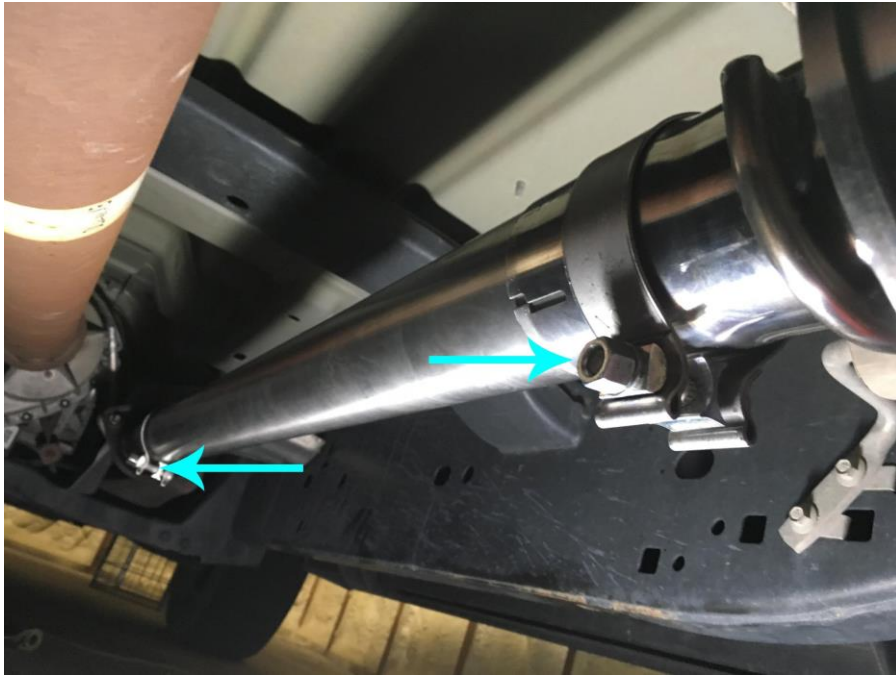


9. Place rear pipe over rear end in hangers, and clamp with 3in clamp on front (muffler Side), tighten to snug. (15mm)

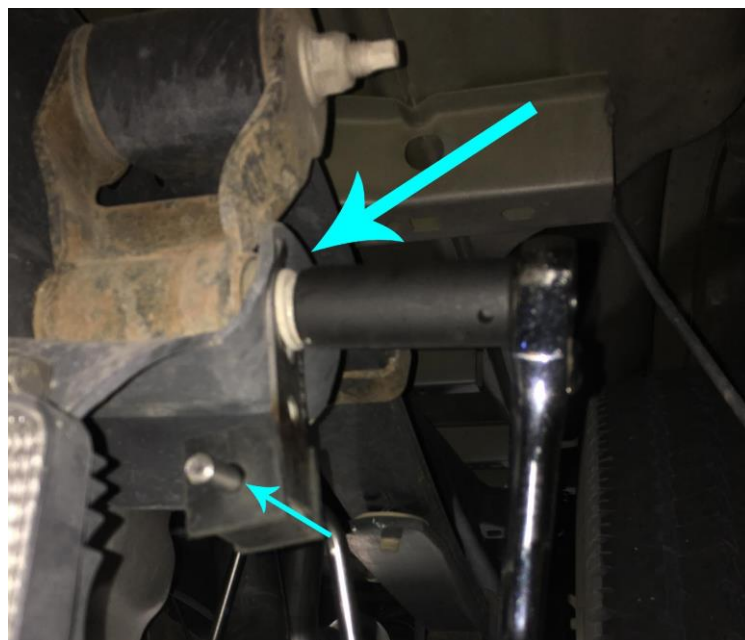




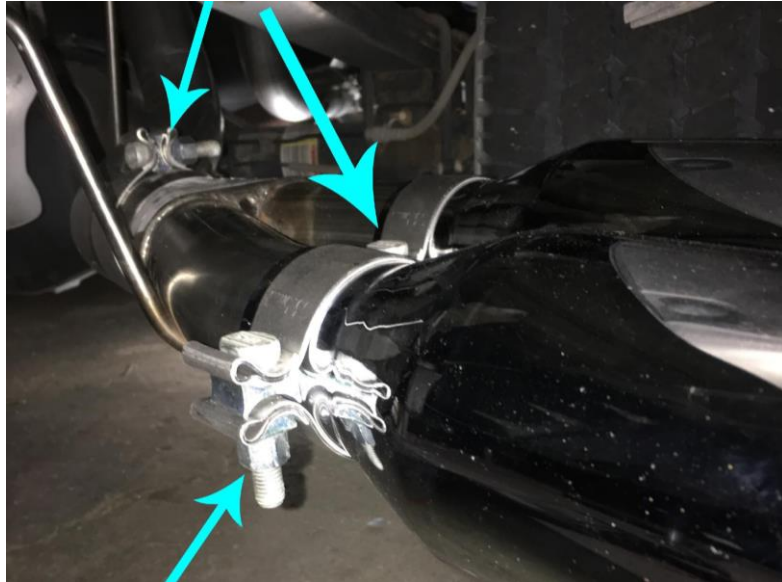
- 10.** Test fit mid pipe for size, mark at rear end of pipe, where muffler connects and cut it to size. (Kit fits All Box Sizes) Put clamps both ends of pipe on before putting pipe on, and snug 15mm bolts.



- 11.** Place new rear hanger for tips on suspension bolt (loosen 18mm)



**12.** Clamp Y-Pipe on rear section (2.5 Clamp) and tighten 15mm Bolt Then install the 2 Exhaust Tips and tighten the two 15mm clamps.



**13.** Go back and tighten all exhaust clamp bolts to 47mm

**14.** Retighten all bolts after 100 miles due to heat.



Installation Instructions Written by AmericanMuscle Customer Keifer Mitchell on  
7/11/16.