

Blowfish Shifter Support Bracket MT-82

By: Cole Hegwer

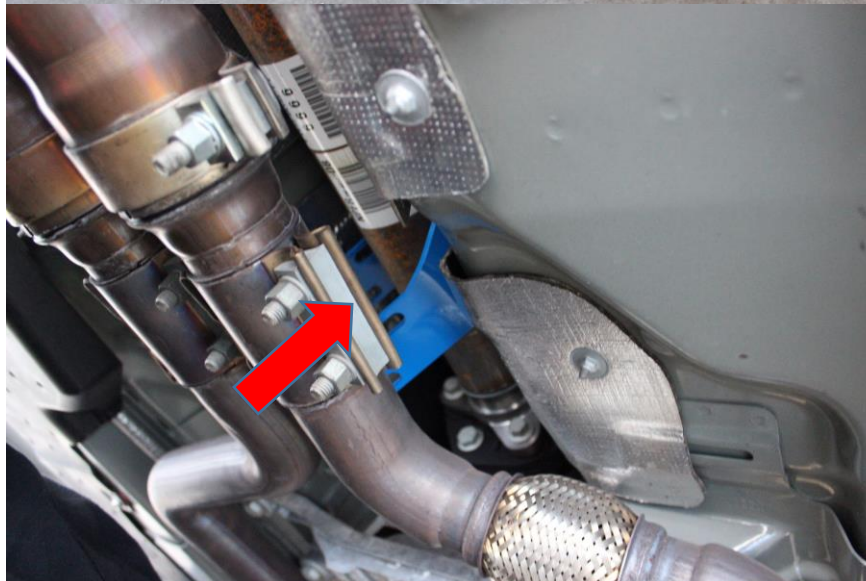
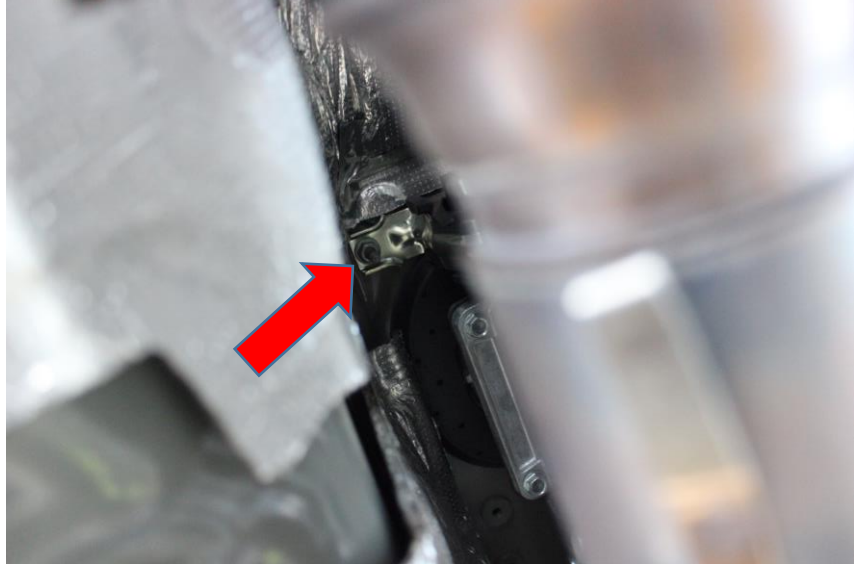
What's needed

- 10 mm deep socket
- 15mm deep socket
- 3/8 ratchet
- 12" extension
- 3/8 wobble head
- 15mm wrench
- jack
- jack stands

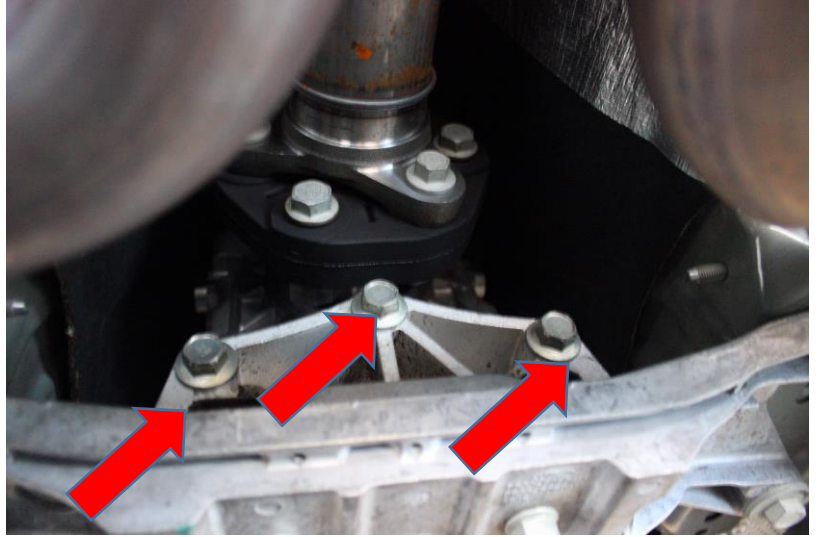
1. Jack up car
2. Remove 2 10mm nuts off stock support bracket

3. Slide shifter bracket off

4. Wiggle the blowfish upper bracket into place with the rubber grommets facing the rear of the car (note: lift the shifter up with one hand to allow the bracket to rotate over the driveshaft)



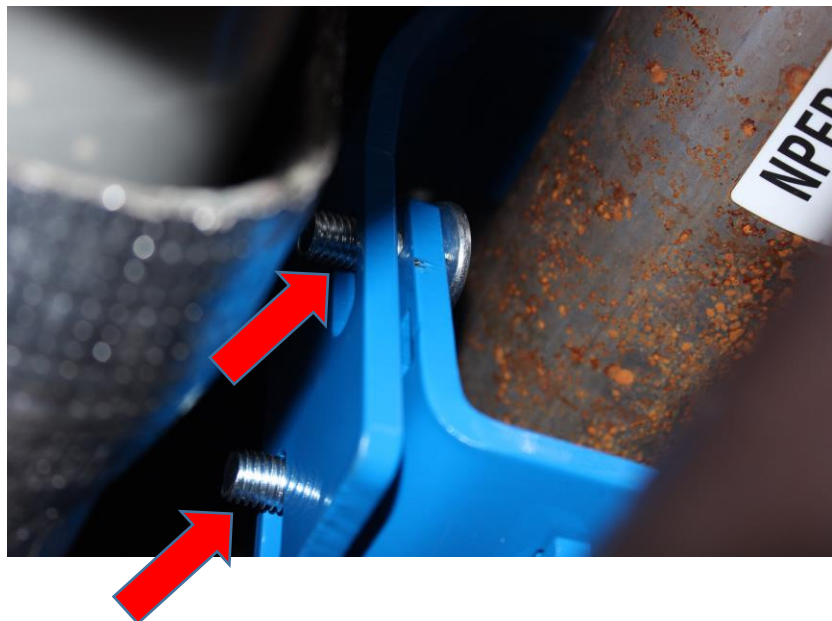
5. Loosen 3 15mm bolts on transmission just enough to fit lower bracket on



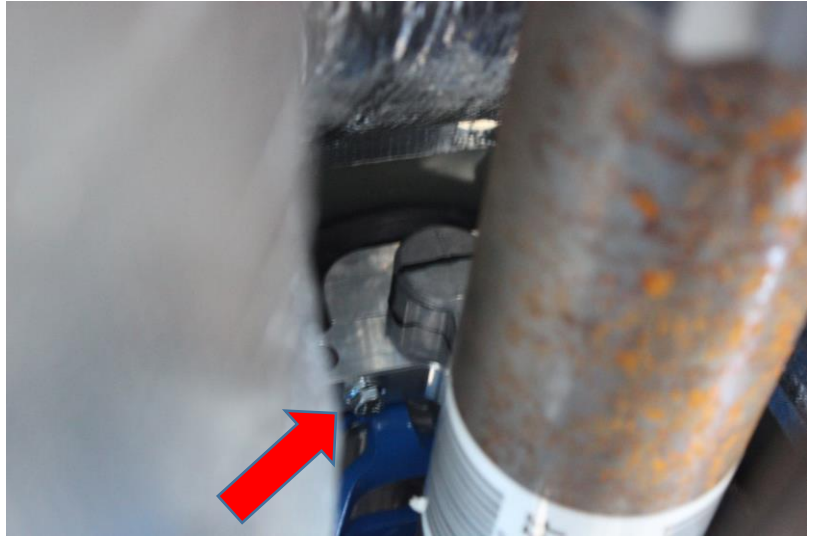
6. Put lower bracket into place and tighten down the 15mm bolts back down.



7. Align upper bracket with holes on lower bracket
8. Put 4 supplied bolts into the holes from the inside and get the nut on from the outside just tight enough to stay on so you can still adjust the height.



9. Put lower clamp into place and slide the rods into the rubber grommets on the upper clamp. (lift shifter to get proper alignment with the rubber grommets)
10. Put upper clamp on top and bolt in the 2 supplied 10mm bolts into place



11. Push upper bracket up as high as possible and tighten all 4 15mm nuts to secure upper and lower brackets together.
12. You're all done!

